

PUBLIC INFORMATION MEETING I-35/I-80/IA141 PRELIMINARY DESIGN

Polk County, Iowa IM-080-3(178)127--13-77

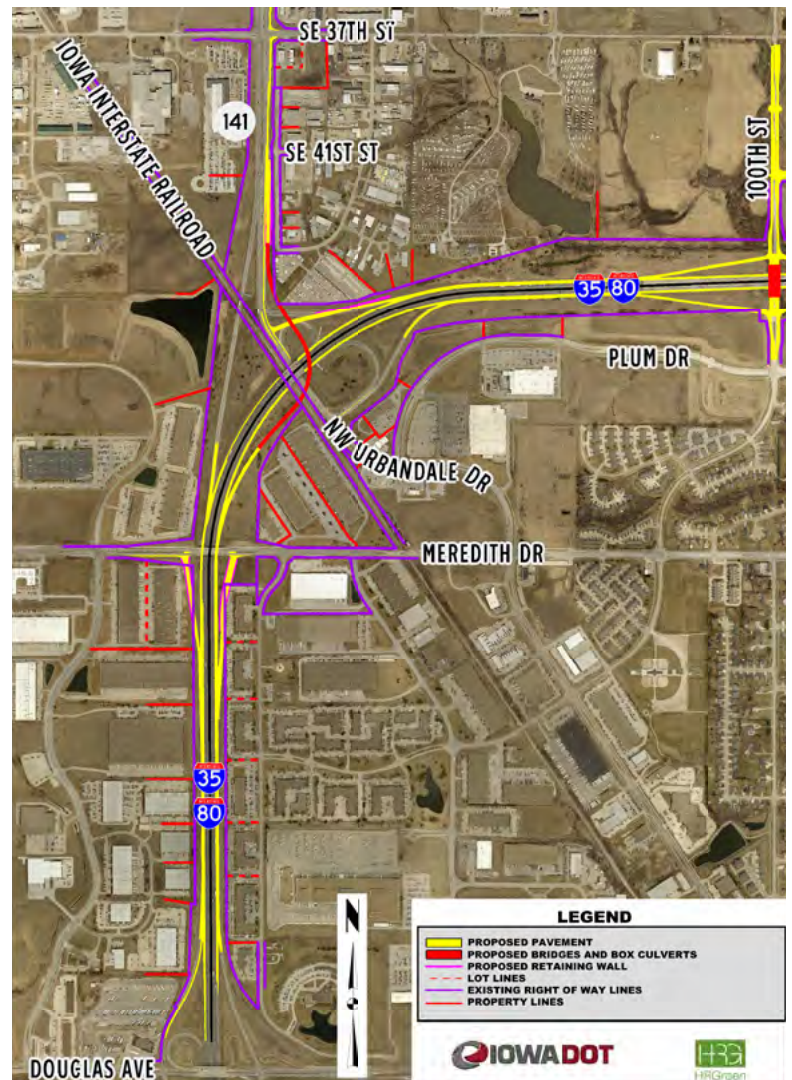
MEETING DATE: MARCH 9, 2017

Project Description

The Iowa Department of Transportation (DOT) in partnership with the cities of Urbandale, Grimes, and Johnston are proposing to construct improvements in the I-35/I-80/IA141 Interchange Corridor. The proposed improvements include the construction of interstate widening, auxiliary lanes, entrance and exit ramps, multiple structures including a bridge and retaining walls, lighting, traffic signalization, and signing.

An Interchange Justification Report (IJR) was completed for this project in June 2016 and an Environmental Assessment (EA) was approved in September 2016. A Finding of No Significant Impact (FONSI) was approved in early January 2017. Preliminary Design Plans and a Preliminary Right of Way Layout were completed in late January 2017.

PROPOSED IMPROVEMENTS (INITIAL BUILD)



PURPOSE AND NEED

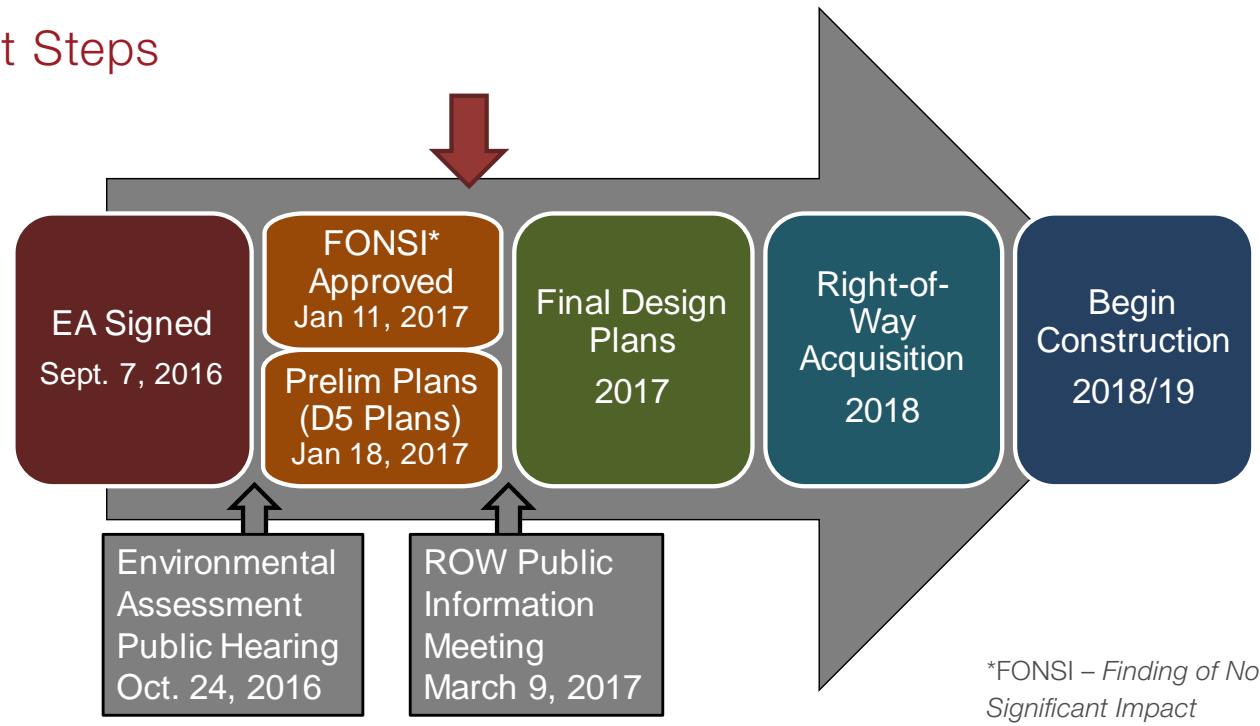
Purpose of Project:

- Improve safety
- Increase traffic capacity

Need for Action:

- Back ups during peak traffic hours
- Northbound exit loop ramp over capacity
- Crashes above the statewide average

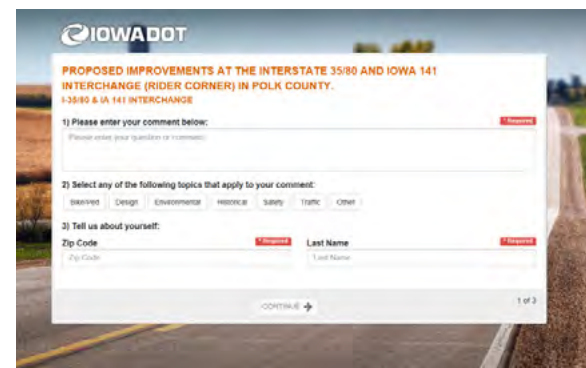
Next Steps



Project Costs

The Iowa Department of Transportation has 44.2 million dollars programmed for years 2018-2021. Dollars have not been programmed for potential future construction associated with the “Final Build” (presented during the EA Public Hearing in October 2016 and shown on the next page).

Year	Activity	Programmed Amount
2018	Right of Way	\$0.6 M
2019	Grading, Bridge	\$19.5 M
2020	Grading, Paving, Signals, Lighting	\$23.8 M
2021	Erosion Control	\$0.3 M
Total		\$44.2 M



Public Comments

Visit <http://bit.ly/iowadot6611241>

Due Date
March 20, 2017

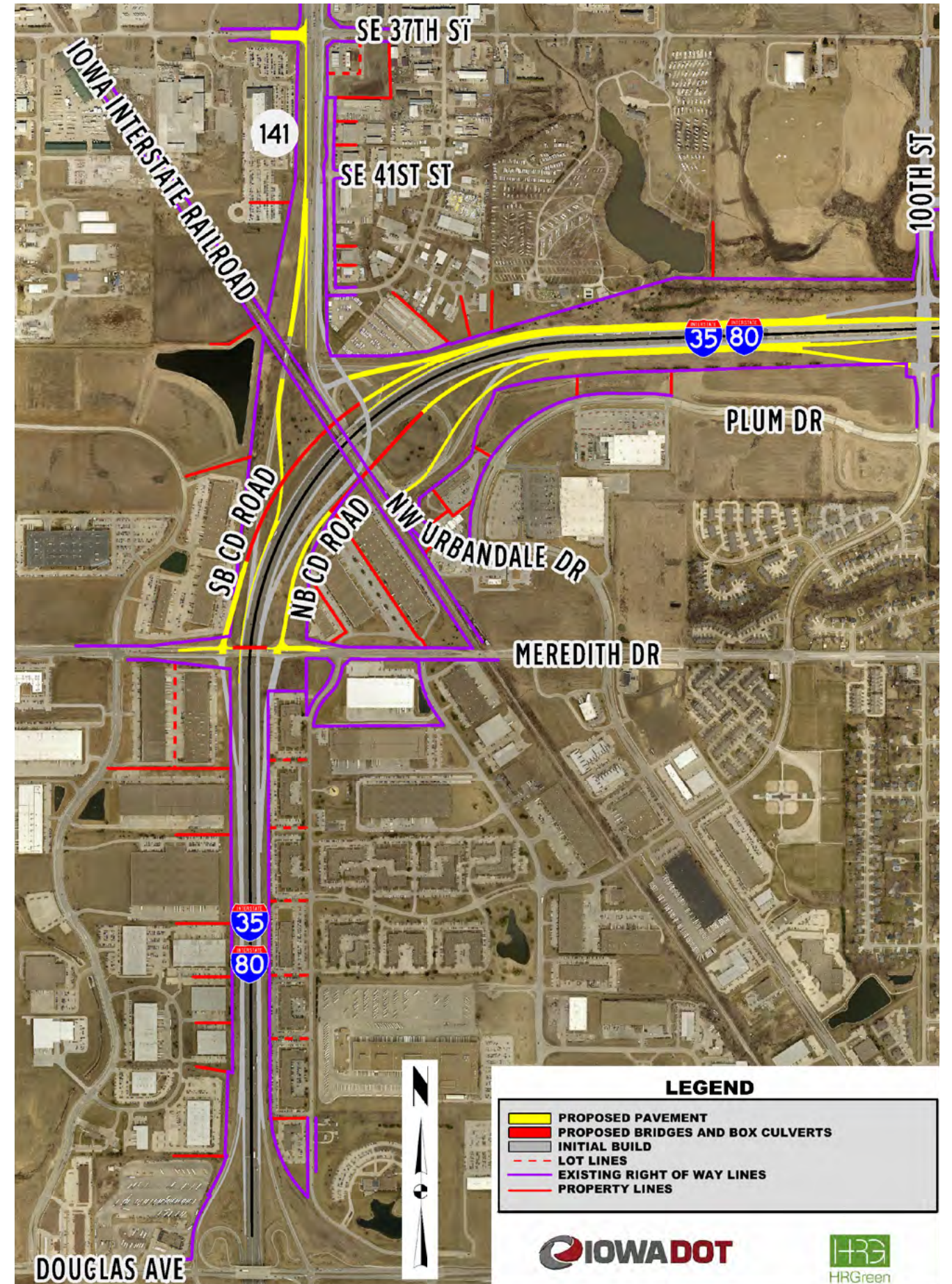


For More Information

Visit  <http://tinyurl.com/HRG-IADOT>

Contact **Scott Dockstader**
Iowa DOT - District 1 Office
1020 S. 4th St., Ames, IA 50010
(515) 239-1194
scott.dockstader@dot.iowa.gov

FUTURE FINAL BUILD (NOT PROGRAMMED)



LEGEND

- PROPOSED PAVEMENT
- PROPOSED BRIDGES AND BOX CULVERTS
- INITIAL BUILD
- LOT LINES
- EXISTING RIGHT OF WAY LINES
- PROPERTY LINES

