

ROUTE YOUR TRIP THROUGH IOWA - At the Nation's Crossroads

WHETHER you are traveling east and west or north and south, you can shorten your mileage materially, lower your travel costs and add much to the pleasure of your trip by routing yourself through Iowa.

Notice the main transcontinental highways

on the simplified map below. The shortest and best routes between the coasts and from the Gulf to Canada pass through Iowa. By routing your trip across Iowa you save mileage while enjoying the pleasure of driving over smooth, fast, modern highways. You also

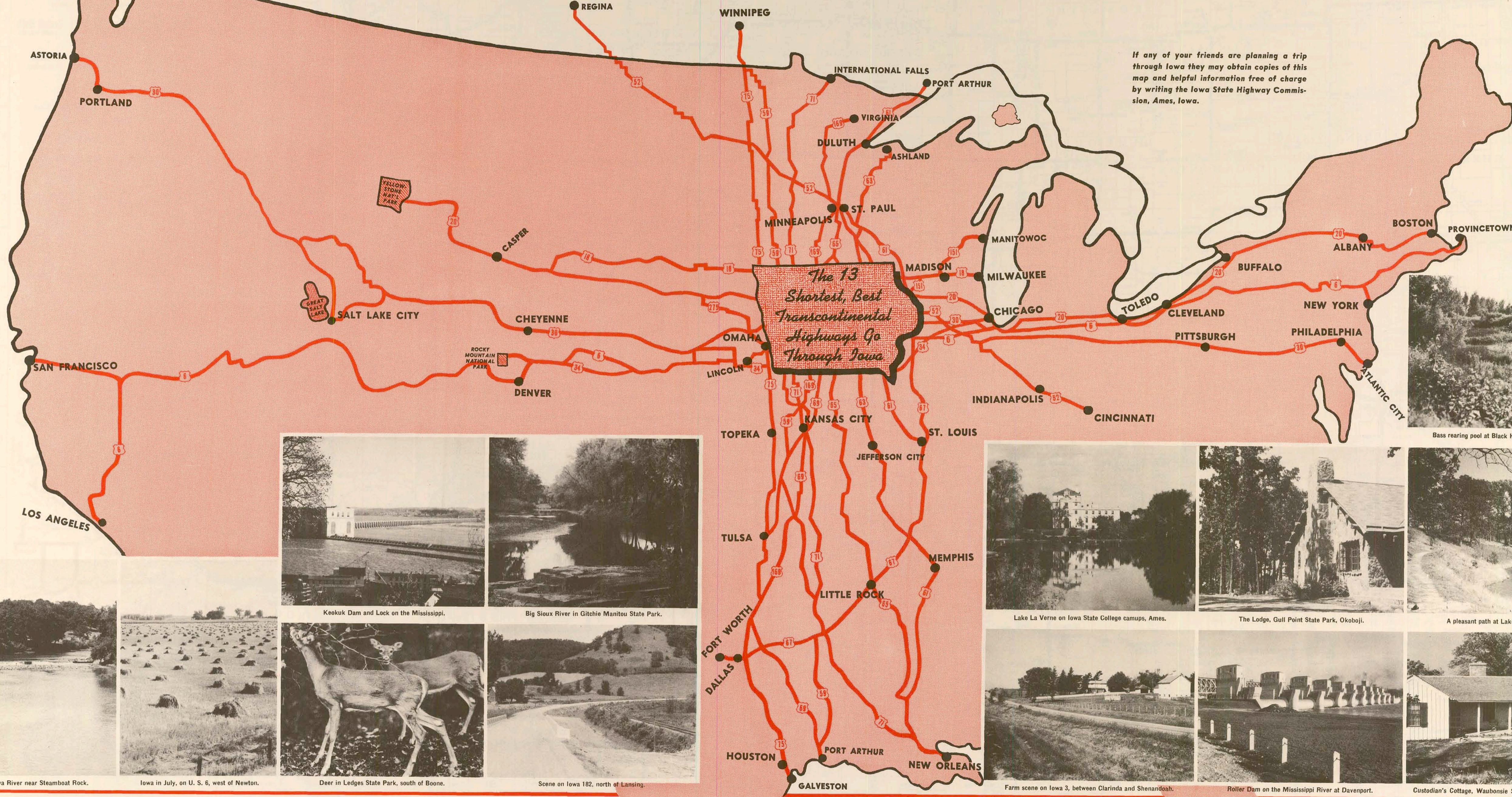
benefit by the lower gasoline tax rate, and you will enjoy the modern, reasonably-priced hotel, tourist court and restaurant accommodations available along all of the routes in every part of the state.

OF THE total mileage of the U. S. roads which traverse Iowa, 92 per cent are paved with concrete; 2 per cent have bituminous surfacing, and only 6 per cent are surfaced with gravel. In addition to the paving on the U. S. routes, you will find more than 1500 miles of

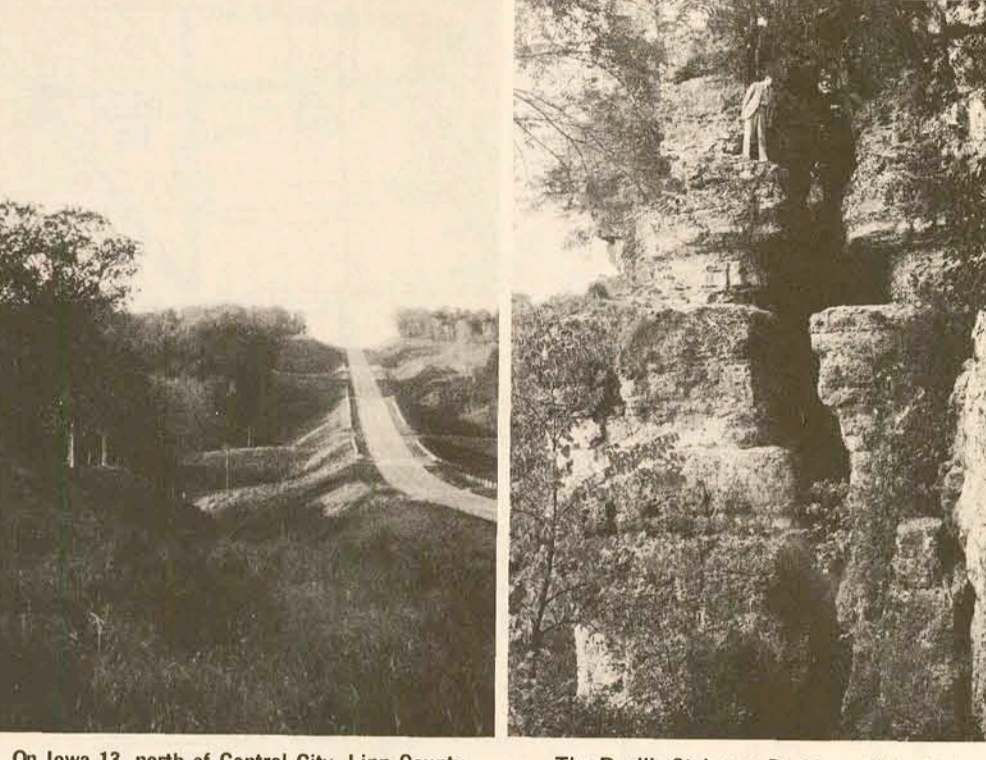
concrete paving and more than 500 miles of bituminous surfacing on State-numbered routes. Many of these State-numbered routes offer alternate cross-state and intra-state connections quite as attractive and desirable as the U. S. routes.

IF YOU have never traveled through the heart of the richest farming land in America, Iowa will be a real treat to you. Lush green fields, magnificent vistas of meadow and corn and growing grain, picturesque lakes and rivers, and some of the most beautiful

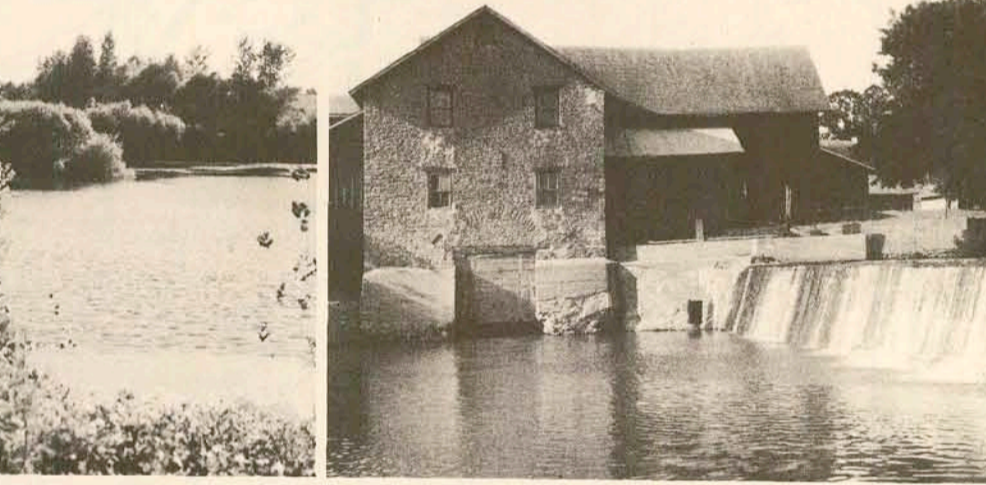
state parks in the nation will add to the pleasure of your journey through this delightful midwest garden spot. Whether you are traveling east, west, north or south, the logical way and the most pleasant way is the route through Iowa.



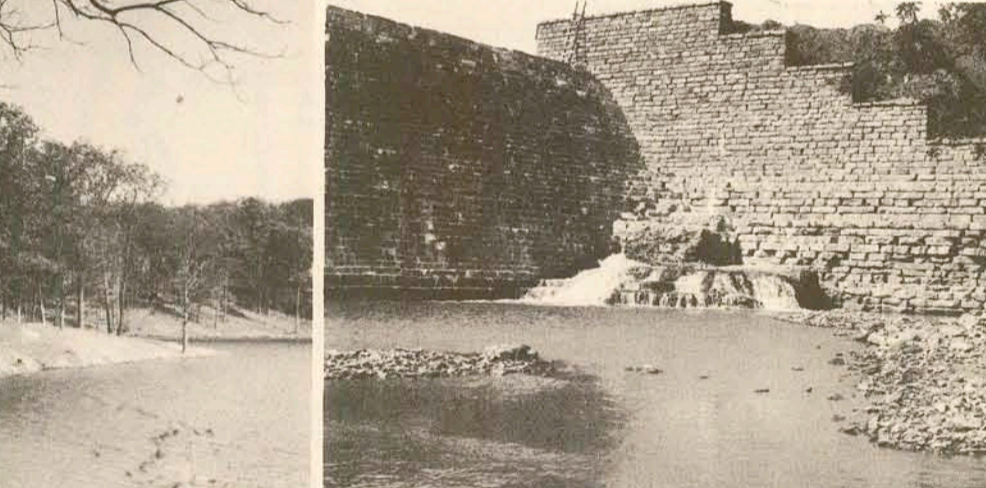
If any of your friends are planning a trip through Iowa they may obtain copies of this map and helpful information free of charge by writing the Iowa State Highway Commission, Ames, Iowa.



On Iowa 13, north of Central City, Linn County.



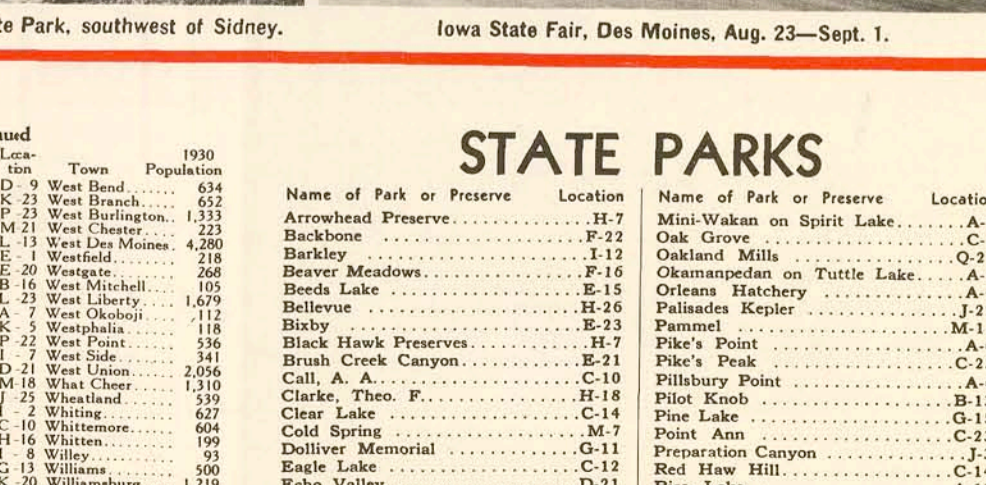
The Devil's Stairway, Backbone State Park.



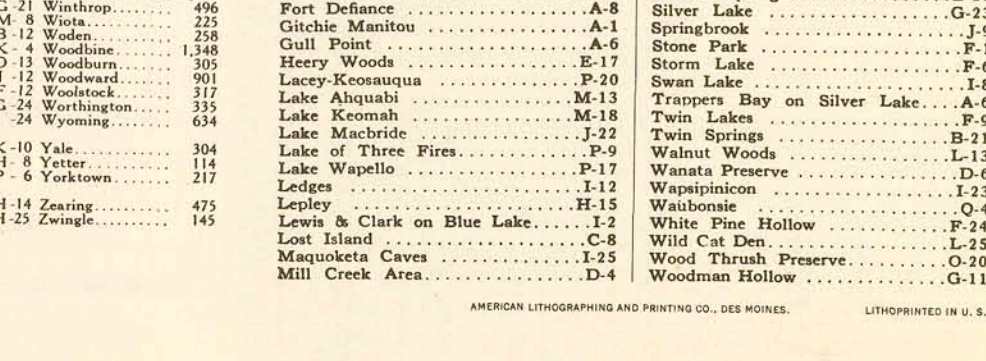
Bass rearing pool at Black Hawk Lake near Lake View.



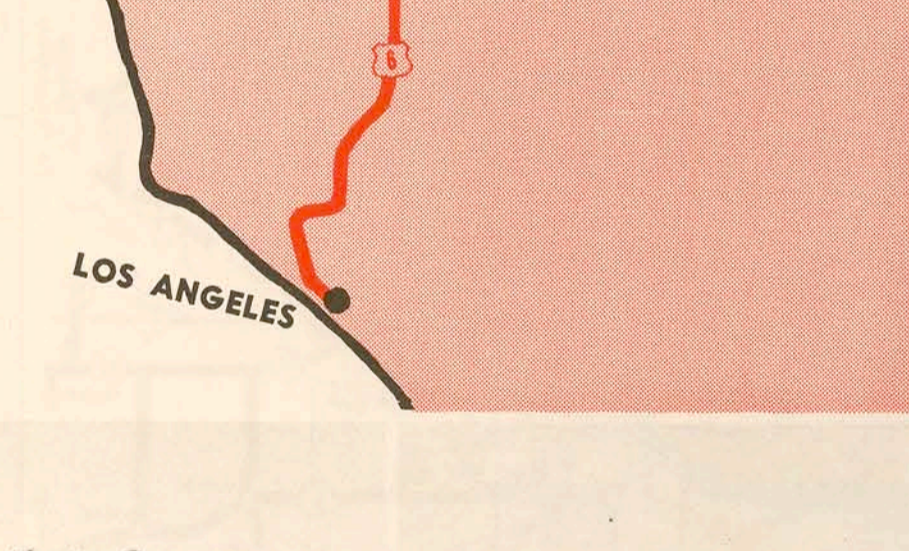
Old Stone Mill at Spillville, Winneshiek County.



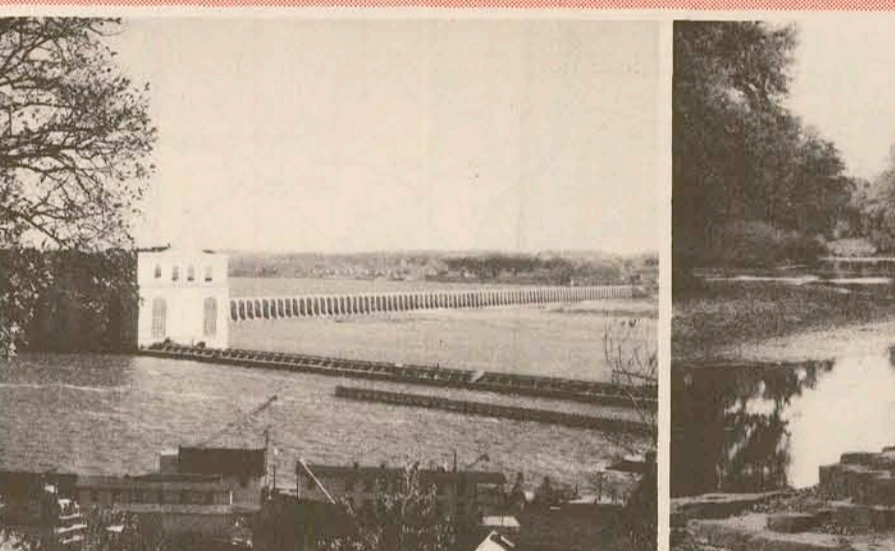
A pleasant path at Lake McBride State Park.



Spillway at Beed's Lake State Park, north of Hampton.



Keokuk Dam and Lock on the Mississippi.



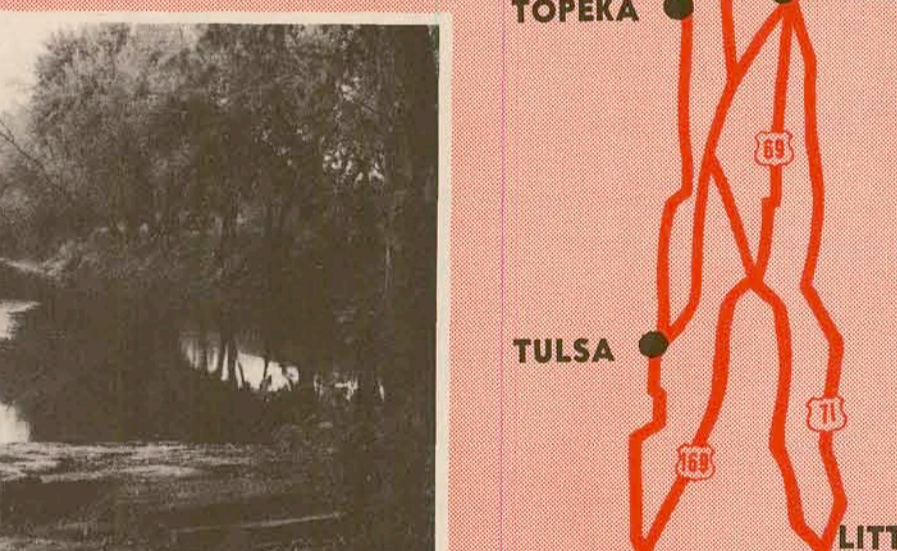
Big Sioux River in Gitchie Manitow State Park.



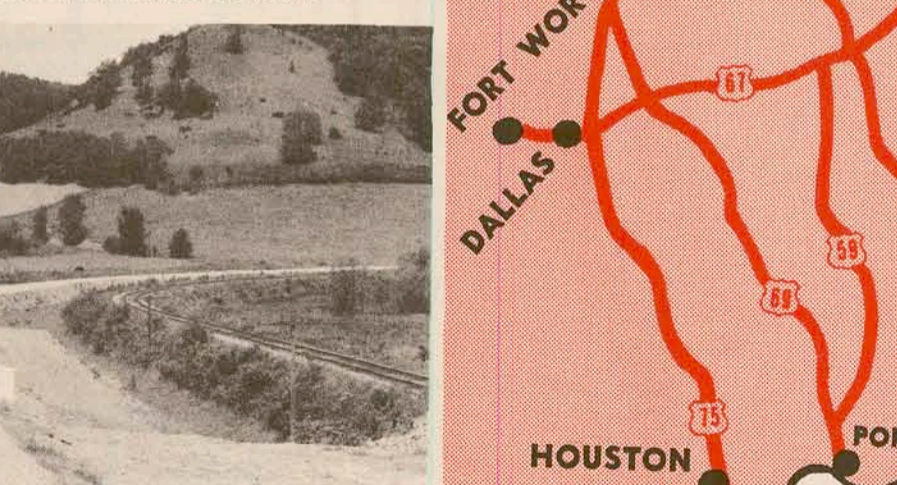
Deer in Ledges State Park, south of Boone.



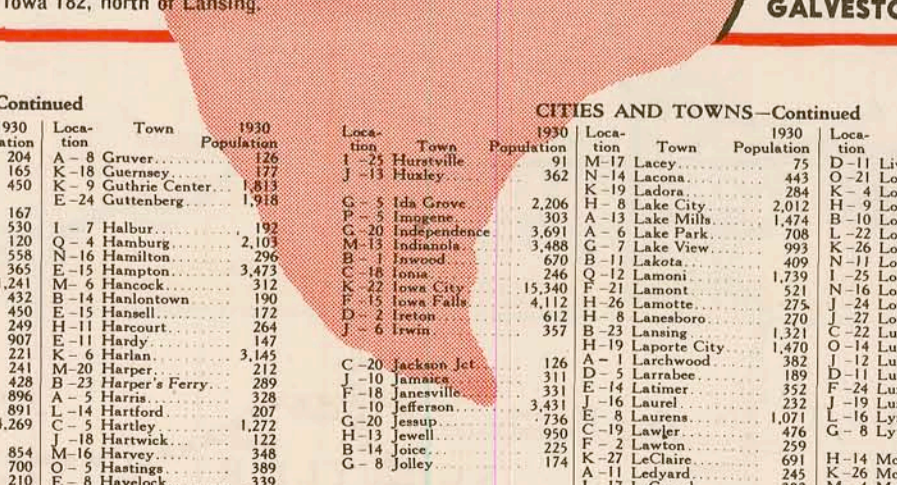
Scene on Iowa 192, north of Lansing.



Lake La Verne on Iowa State College campus, Ames.



The Lodge, Gull Point State Park, Okoboji.



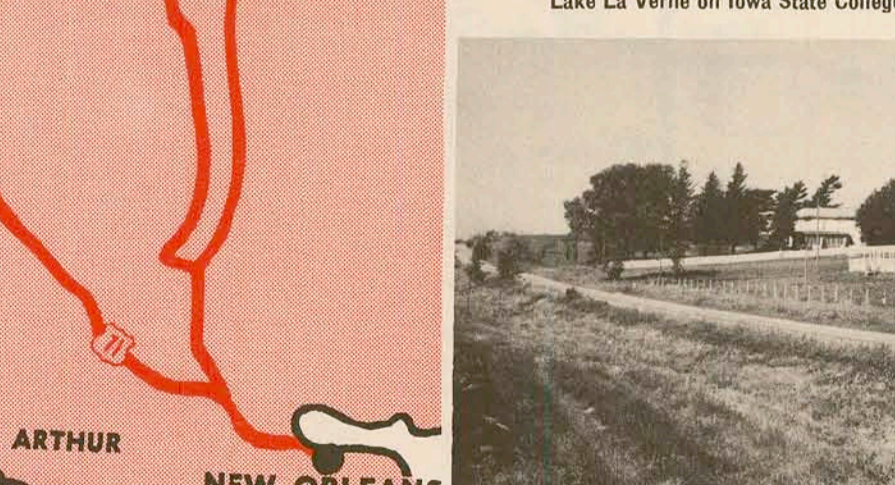
A farm scene on Iowa 3, between Clarinda and Shenandoah.



Roller Dam on the Mississippi River at Davenport.



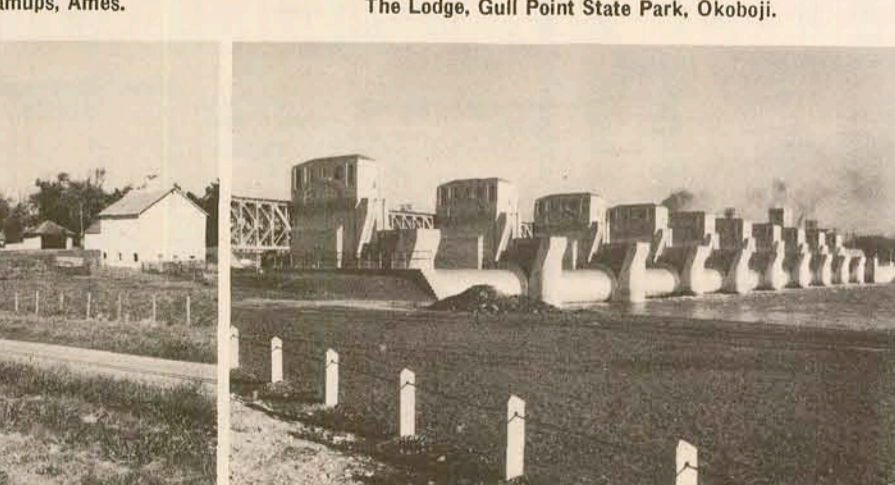
Custodian's Cottage, Waubesa State Park, southwest of Sidney.



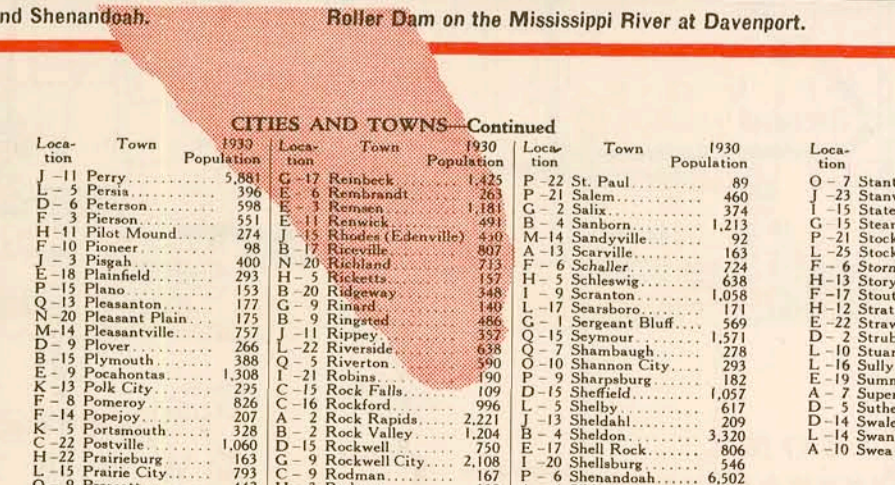
Iowa State Fair, Des Moines, Aug. 23—Sept. 1.



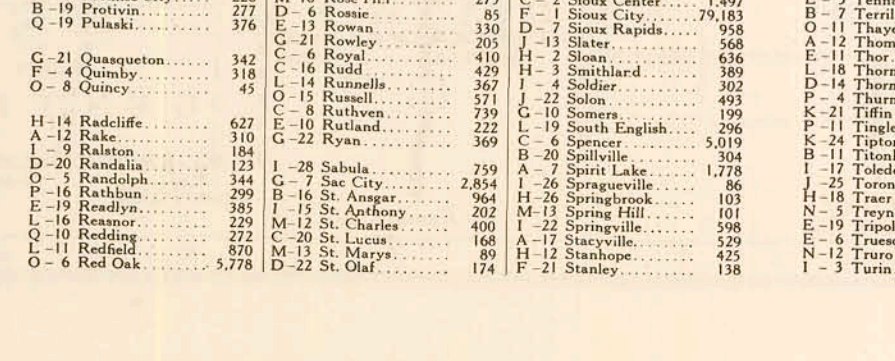
Roller Dam on the Mississippi River at Davenport.



Custodian's Cottage, Waubesa State Park, southwest of Sidney.



Iowa State Fair, Des Moines, Aug. 23—Sept. 1.



Roller Dam on the Mississippi River at Davenport.

Cities and Towns of Iowa

ALPHABETICAL INDEX

Loc.	1930 Pop.	Loc.	1930 Pop.	Loc.	1930 Pop.	Loc.	1930 Pop.
A-16 Albia	1,324	A-17 Albia	1,324	A-18 Albia	1,324	A-19 Albia	1,324
A-20 Albia	1,324	A-21 Albia	1,324	A-22 Albia	1,324	A-23 Albia	1,324

CITIES AND TOWNS—Continued

Loc.	1930 Pop.	Loc.	1930 Pop.	Loc.	1930 Pop.	Loc.	1930 Pop.
A-24 Albia	1,324	A-25 Albia	1,324	A-26 Albia	1,324	A-27 Albia	1,324
A-28 Albia	1,324	A-29 Albia	1,324	A-30 Albia	1,324	A-31 Albia	1,324

CITIES AND TOWNS—Continued

Loc.	1930 Pop.	Loc.	1930 Pop.	Loc.	1930 Pop.	Loc.	1930 Pop.
A-32 Albia	1,324	A-33 Albia	1,324	A-34 Albia	1,324	A-35 Albia	1,324
A-36 Albia	1,324	A-37 Albia	1,324	A-38 Albia	1,324	A-39 Albia	1,324

CITIES AND TOWNS—Continued

Loc.	1930 Pop.	Loc.	1930 Pop.	Loc.	1930 Pop.	Loc.	1930 Pop.
A-40 Albia	1,324	A-41 Albia	1,324	A-42 Albia	1,324	A-43 Albia	1,324
A-44 Albia	1,324	A-45 Albia	1,324	A-46 Albia	1,324	A-47 Albia	1,324

CITIES AND TOWNS—Continued

Loc.	1930 Pop.	Loc.	1930 Pop.	Loc.	1930 Pop.	Loc.	1930 Pop.
A-48 Albia	1,324	A-49 Albia	1,324	A-50 Albia	1,324	A-51 Albia	1,324
A-52 Albia	1,324	A-53 Albia	1,324	A-54 Albia	1,324	A-55 Albia	1,324

CITIES AND TOWNS—Continued

Loc.	1930 Pop.	Loc.	1930 Pop.	Loc.	1930 Pop.	Loc.	1930 Pop.
A-56 Albia	1,324	A-57 Albia	1,324	A-58 Albia	1,324	A-59 Albia	1,324
A-60 Albia	1,324	A-61 Albia	1,324	A-62 Albia	1,324	A-63 Albia	1,324

CITIES AND TOWNS—Continued

Loc.	1930 Pop.	Loc.	1930 Pop.	Loc.	1930 Pop.	Loc.	1930 Pop.
A-64 Albia	1,324	A-65 Albia	1,324	A-66 Albia	1,324	A-67 Albia	1,324
A-68 Albia	1,324	A-69 Albia	1,324	A-70 Albia	1,324	A-71 Albia	1,324

CITIES AND TOWNS—Continued

Loc.	1930 Pop.	Loc.	1930 Pop.	Loc.	1930 Pop.	Loc.	1930 Pop.
A-72 Albia	1,324	A-73 Albia	1,324	A-74 Albia	1,324	A-75 Albia	1,324
A-76 Albia	1,324	A-77 Albia	1,324	A-78 Albia	1,324	A-79 Albia	1,324

STATE PARKS

Name of Park or Preserve	Location	Name of Park or Preserve	Location
Arrowhead Preserve	P-22	Mini-Wakas on Preserve	Location
Backbone	P-27	Oak Grove	A-7
Barkley	P-12	Oakland Mills	C-1
Beaver Meadows	P-16	Okampanon on Tuttle Lake	A-9
Beckwith	P-11	Ottawa Hatchery	C-21
Bellevue	P-26	Palmdale Kepler	P-22
Black Hawk Preserve	H-7	Pike's Point	M-1
Black Hawk Preserve	H-7	Pike's Point	M-1
Black Hawk Preserve	H-7	Pike's Point	M-1