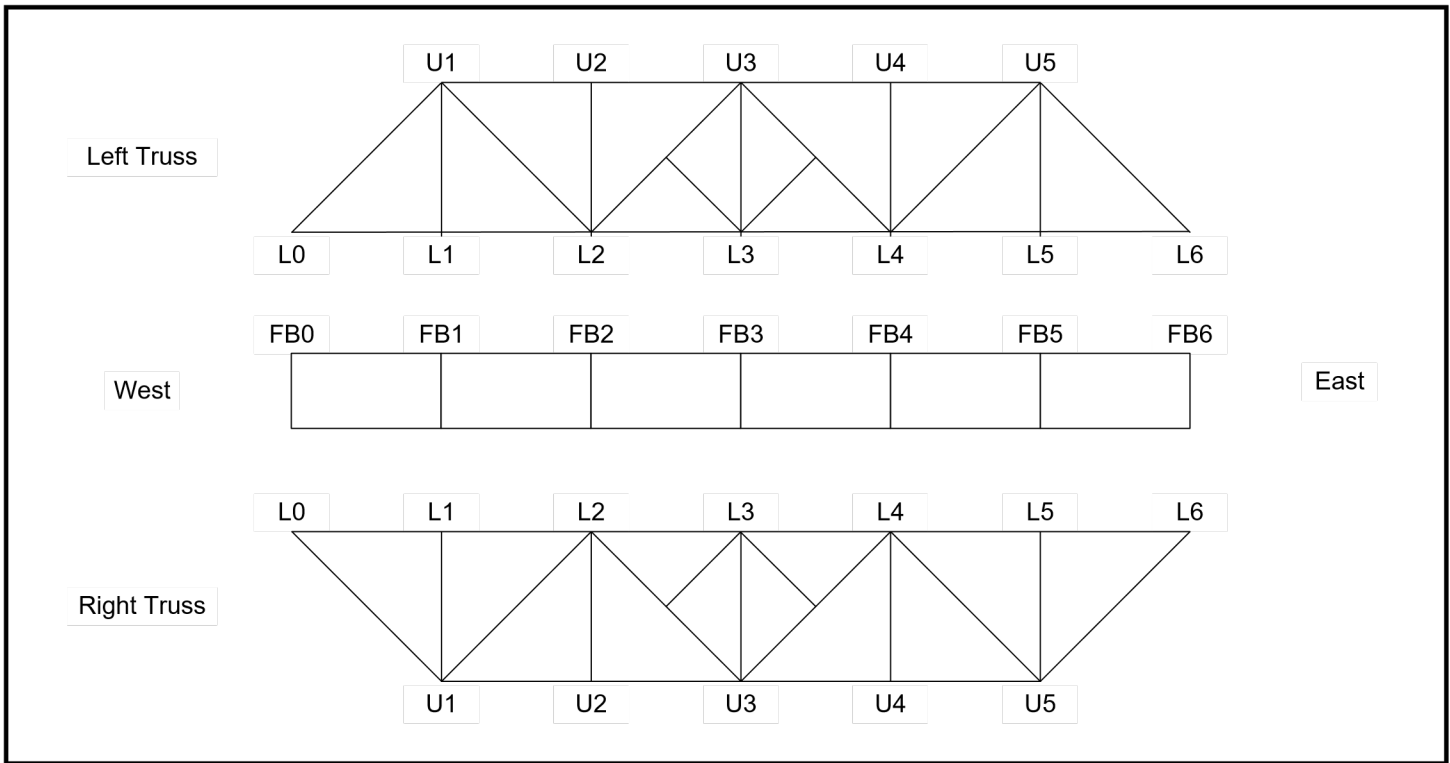


Sample NSTM Locations and Condition for Trusses

County: Adair FHWA No.: 012345 County ID: Prescott 13 Insp. Date: 7/18/2013



Span	Member Location	NSTM Member?	Comment #'s Left Truss	Comment #'s Right Truss	Inspection Procedure Required	Inspection Procedure Used
1	L0-U1		2	2		
1	L0-L1	Y	1	1	Hands-on	Hands-on
1	U1-L1	Y	1, 8	1, 8, 5	Hands-on	Hands-on
1	U1-U2		2	2		
1	U1-L2	Y	1, 4	1, 4	Hands-on	Hands-on
1	L1-L2	Y	2	6	Hands-on	Mag-Partical
1	U2-L2	Y	2, 8	2, 8	Hands-on	Hands-on
1	U2-U3		2, 7	2, 7		
1	L2-U3		1	1, 4		
1	Brace at L2-U3		2	2		
1	L2-L3	Y	1, 5	1, 9	Hands-on	Dye Penetrant
1	U3-L3	Y	2, 8	2, 8	Hands-on	Hands-on
1	U3-U4		2, 7	1		
1	U3-L4		1, 4	1, 4		
1	Brace at U3-L4		2	2		
1	L3-L4	Y	2, 5	1, 9	Hands-on	Ultrasonic
1	U4-L4	Y	2, 3, 6	2, 8	Hands-on	Hands-on
1	U4-U5		2	2		
1	L4-U5	Y	1, 4	1	Hands-on	Hands-on
1	L4-L5	Y	2	2	Hands-on	Hands-on
1	U5-L5	Y	1, 3	2, 8	Hands-on	Hands-on
1	U5-L6		2	2		
1	L5-L6	Y	1	2	Hands-on	Hands-on

Code	Comment
1	No notable deficiencies.
2	Light damage.
3	Moderate damage.
4	Gusset Plates damaged when torch was used to cut rivets when truss was moved.
5	Splice plates on top & bottom flanges not bolted to L3.
6	Weld between the vertical & railing spacer bar cracked.
7	Channels damaged when torch was used to cut rivets when truss was moved.
8	Spacer blocks welded to vertical, welds across direction of the stress.
9	Interior splice plate top channel flange missing at L3.