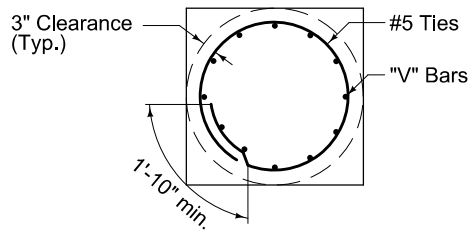


- ① Shape top 11 inches with forms.
- ② Install rodent guard or non-shrink grout with weep hole.
- ③ Furnish nut, nut and plate, or nut and anchor bolt assembly ring plate on embedded end.

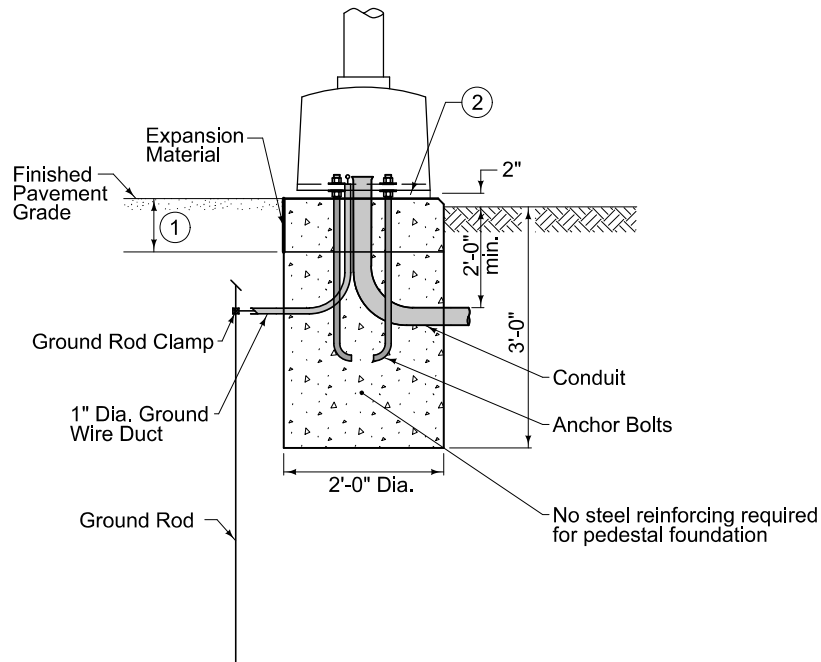
| Max. Mast Arm Length | Foundation | | "V" Bars | | | Tie Bars | | | | |
|----------------------|------------|--------|----------|------|--------|-----------|---------------|-----|---------------|-----|
| | W | L | Count | Size | Length | Bar Count | Upper Spacing | | Lower Spacing | |
| | | | | | | | # Spaces | S1 | # Spaces | S2 |
| 35'-0" | 3'-0" | 12'-0" | 12 | 8 | 11'-6" | 17 | 9 | 12" | N/A | N/A |
| 45'-0" | 3'-0" | 14'-0" | 12 | 8 | 13'-6" | 19 | 11 | 12" | N/A | N/A |
| 55'-0" | 3'-0" | 16'-0" | 12 | 8 | 15'-6" | 25 | 12 | 8" | 5 | 12" |
| 60'-0" | 3'-0" | 18'-0" | 13 | 8 | 17'-6" | 28 | 15 | 8" | 5 | 12" |
| 70'-0" | 3'-6" | 18'-0" | 12 | 10 | 17'-6" | 28 | 15 | 8" | 5 | 12" |
| 80'-0" | 3'-6" | 21'-0" | 14 | 10 | 20'-6" | 40 | 22 | 6" | 10 | 8" |
| 90'-0" | 4'-0" | 22'-0" | 16 | 10 | 21'-6" | 42 | 24 | 6" | 10 | 8" |
| 100'-0" | 4'-0" | 24'-0" | 18 | 10 | 23'-6" | 47 | 32 | 6" | 7 | 8" |



MAST ARM POLE FOUNDATION

| | | | |
|---|--------------------|--|----------|
| SUDAS | IOWADOT | REVISION | |
| | | 1 | 04-17-18 |
| FIGURE 8010.102 | STANDARD ROAD PLAN | TS-102 SHEET 1 of 2 | |
| REVISIONS: Changed the Anchor Bolts on Page 1 from bent to straight. Added Circle Note 3. | | | |
| Paul D. Wigand SUDAS DIRECTOR | | Brian Smith DESIGN METHODS ENGINEER | |
| TRAFFIC SIGNAL POLE FOUNDATION | | | |

- ① Shape top 11 inches with forms.
- ② Install rodent guard or non-shrink grout with weep hole.



PEDESTAL POLE FOUNDATION

| | | |
|---|--------------------|--|
| SUDAS | IOWADOT | REVISION |
| | | 1 04-17-18 |
| FIGURE 8010.102 | STANDARD ROAD PLAN | TS-102 |
| | | SHEET 2 of 2 |
| REVISIONS: Changed the Anchor Bolts on Page 1 from bent to straight. Added Circle Note 3. | | |
| Paul D. Wigand SUDAS DIRECTOR | | Brian Smith DESIGN METHODS ENGINEER |
| TRAFFIC SIGNAL POLE FOUNDATION | | |