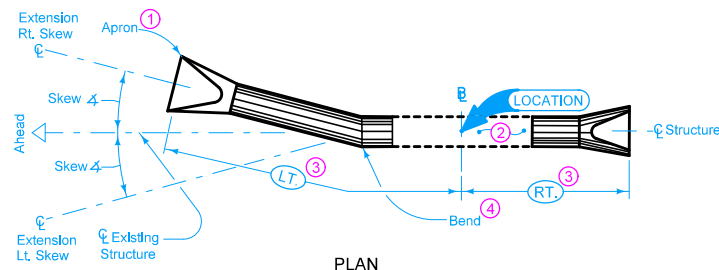


SECTION



PLAN

$\bar{E}$  is  $\bar{C}$  of roadway, dike, survey, or other as detailed on plan.

Extend in the direction specified with skew measured from centerline of existing structure.

- ① Refer to the following:  
 DR-201 for circular concrete.  
 DR-202 for low clearance concrete.  
 DR-203 for circular metal.  
 DR-205 for circular concrete with end wall.  
 DR-206 for low clearance concrete with end wall.
- ② Existing structure.
- ③ Dimension Rt. or Lt. is measured at  $\bar{C}$  of pipe along laying length.
- ④ Bend may be accomplished by use of metal elbow, Adapter (DR-122), Type "D" Section, or Concrete Elbow (DR-141) as specified.

A+B = Length

Possible Tabulation:  
104-3

	REVISION	
	2	10-17-17
STANDARD ROAD PLAN	DR-622	
SHEET 1 of 1		
REVISIONS: Added Designer Info button.		
APPROVED BY DESIGN METHODS ENGINEER		
PIPE EXTENSION HORIZONTAL BEND ONE OR BOTH ENDS		