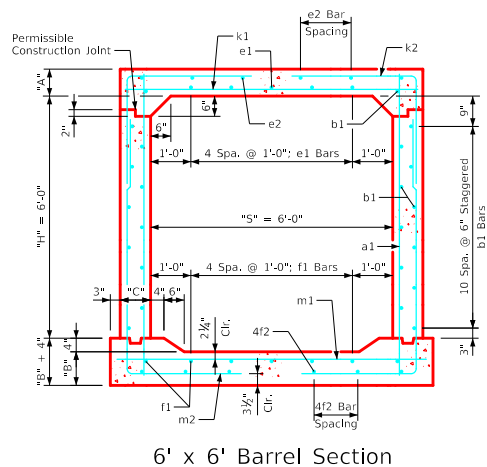
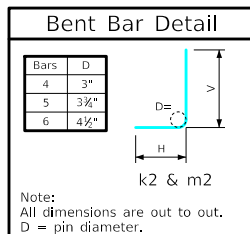


Variable Dimensions and Quantities for 6' x 6' Barrel Sections

Dimensions								Bar List																								Quantities																	
Fill	S	H	A	B	C	D	e1	a1		b1		e1		e2		f1		f2		k1			k2			k9			m1		m2			Concrete (CY/FT)				Steel (LB/FT)											
								Size	Sp.	Size	Sp.	Size	Sp.	Size	Sp.	Size	Sp.	Size	Sp.	Size	Sp.	Size	Sp.	Size	Sp.	Size	Sp.	Size	Sp.	Size	Sp.	Size	Sp.	Size	Sp.	Size	Sp.		Slab	Floor	Walls	Total							
0	6	6	10.5	10	9	9	4	12	7'-7"	4	6	24	5	12	5	4	14	6	4	12	7	4	14	6	6	9	7'-2"	4	6	7'-4"	4'-5"	2'-11"	-	-	6	9	7'-8"	4	6	10'-1"	3'-10"	6'-3"	-	-	0.275	0.284	0.313	0.872	122.24
1	6	6	9	10	9	9	4	9	7'-6"	4	6	24	4	12	5	4	14	6	4	12	7	4	14	6	5	9	7'-2"	5	12	7'-9"	4'-7"	3'-2"	-	-	6	9	7'-8"	5	12	10'-10"	4'-7"	6'-3"	-	-	0.218	0.284	0.313	0.838	113.55
2	6	6	8	10	9	9	4	9	7'-5"	4	6	24	5	12	5	4	14	6	4	12	7	4	17	6	6	9	7'-2"	5	12	7'-8"	4'-7"	3'-1"	-	-	6	9	7'-8"	5	12	9'-9"	3'-6"	6'-3"	5	7'-8"	0.218	0.284	0.313	0.815	117.63
3	6	6	8	10	9	9	4	9	7'-5"	4	6	24	4	12	5	4	17	6	4	12	7	4	15	6	4	6	7'-2"	5	12	7'-0"	3'-6"	3'-6"	5	7'-2"	4	6	7'-8"	5	12	9'-4"	3'-1"	6'-3"	5	7'-8"	0.218	0.284	0.313	0.815	102.74
4-7	6	6	8	10	9	9	4	9	7'-5"	4	6	24	4	12	5	4	15	6	4	12	7	4	13	6	4	6	7'-2"	5	12	6'-2"	3'-1"	3'-1"	5	7'-2"	4	6	7'-8"	5	12	9'-1"	2'-10"	6'-3"	5	7'-8"	0.218	0.284	0.313	0.815	100.29
8-10	6	6	8	10	9	9	4	9	7'-5"	4	6	24	4	12	5	4	11	6	4	12	7	4	11	6	4	6	7'-2"	5	12	5'-7"	2'-6"	3'-1"	5	7'-2"	4	6	7'-8"	5	12	8'-9"	2'-6"	6'-3"	5	7'-8"	0.218	0.284	0.313	0.815	98.24
11-15	6	6	8	10	9	9	4	9	7'-5"	4	6	24	4	12	5	4	10	6	4	12	7	4	10	6	6	9	7'-2"	5	12	5'-4"	2'-3"	3'-1"	5	7'-2"	6	9	7'-8"	5	12	8'-6"	2'-3"	6'-3"	5	7'-8"	0.218	0.284	0.313	0.815	108.11
16-20	6	6	8	10	9	9	4	12	7'-5"	4	6	24	4	12	5	4	18	4	4	12	7	4	18	4	5	6	7'-2"	4	6	4'-10"	2'-1"	2'-9"	4	7'-2"	5	6	7'-8"	4	6	8'-4"	2'-1"	6'-3"	4	7'-8"	0.218	0.284	0.313	0.815	106.84
21-25	6	6	8	10	9	9	5	12	7'-5"	4	6	24	4	12	5	4	18	4	4	12	7	4	18	4	6	6	7'-2"	4	6	4'-10"	2'-1"	2'-9"	4	7'-2"	6	6	7'-8"	4	6	8'-4"	2'-1"	6'-3"	4	7'-8"	0.218	0.284	0.313	0.815	126.34
26-30	6	6	8.5	11	9	6	4	6	7'-6"	4	6	24	4	12	5	4	18	4	4	12	7	4	9	6	6	6	7'-2"	4	6	4'-10"	2'-1"	2'-9"	4	7'-2"	6	6	7'-8"	4	6	8'-6"	2'-2"	6'-4"	4	7'-8"	0.229	0.308	0.313	0.850	132.29
31-35	6	6	9.5	12	9	6	4	6	7'-8"	4	6	24	4	12	5	4	18	4	4	12	7	4	10	6	6	6	7'-2"	4	6	4'-11"	2'-1"	2'-10"	4	7'-2"	6	6	7'-8"	4	6	8'-8"	2'-3"	6'-5"	4	7'-8"	0.252	0.333	0.313	0.898	133.42
36-40	6	6	10.5	12.5	9.5	6	4	6	7'-10"	4	6	24	4	12	5	4	11	6	4	12	7	4	11	6	8	9	7'-3"	6	12	6'-2"	2'-6"	3'-8"	6	7'-3"	8	9	7'-9"	6	12	9'-0"	2'-6"	6'-6"	6	7'-9"	0.279	0.349	0.330	0.958	158.92
41-45	6	6	11	13.5	10	6	4	6	7'-11"	4	6	24	4	12	5	4	11	6	4	12	7	4	11	6	8	9	7'-4"	6	12	6'-4"	2'-7"	3'-9"	6	7'-4"	8	9	7'-10"	6	12	9'-1"	2'-6"	6'-7"	6	7'-10"	0.295	0.379	0.347	1.021	160.61
46-50	6	6	11.5	14	11	9	4	12	8'-0"	4	6	24	4	12	5	4	10	6	4	12	7	4	10	6	8	9	7'-6"	5	6	5'-10"	2'-5"	3'-5"	5	7'-6"	8	9	8'-0"	5	6	9'-1"	2'-6"	6'-7"	5	8'-0"	0.316	0.399	0.383	1.098	164.39
51-55	6	6	12	14.5	11.5	9	4	9	8'-1"	4	6	24	4	12	5	4	9	6	4	12	7	4	10	6	8	9	7'-7"	5	6	5'-10"	2'-5"	3'-5"	5	7'-7"	8	9	8'-1"	5	6	9'-2"	2'-6"	6'-8"	5	8'-1"	0.332	0.417	0.400	1.149	168.89



- Notes:**
- Dimensions listed on this sheet to be used in conjunction with Sheet RCB G3-20.
 - The k2 and m2 bars horizontal legs may lap in low fill situations.
 - Fill dimensions "S" and "H" are in feet.
 - Dimensions "A", "B", "C", "D", and "Sp." listed in the bar list are in inches.
 - Dimensions "L", "H", "V" are in feet and inches.

LATEST REVISION DATE	APPROVED BY BRIDGE ENGINEER <i>[Signature]</i>	IOWADOT Highway Division	
		Standard Design Single Reinforced Concrete Box Culverts July, 2020	
		Culvert Barrel Details 6' x 6' Barrel Sections	RCB 6-6-20

ENGLISHLRFDDESIGNEDSINGLECULVERTS.DGN - RCB 6-6-20 - THIS SHEET ISSUED 07-2020.