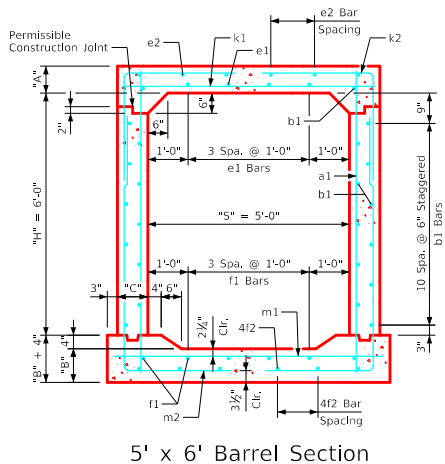
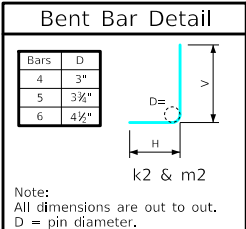


Variable Dimensions and Quantities for 5' x 6' Barrel Sections

Dimensions										Bar List																		Quantities																								
Fill	S	H	A	B	C	D	a1		b1		e1		e2		f1		f2		k1			k2			k9		m1		m2			Concrete (CY/FT)				Steel (LB/FT)																
0	5	6	10	10	9	9	Size	Sp.	L	Size	Sp.	No.	Size	Sp.	No.	Size	Sp.	No.	Size	Sp.	L	Size	Sp.	L	H	V	Size	L	Size	Sp.	L	Size	Sp.	L	H	V	Size	L	Slab	Floor	Walls	Total										
1	5	6	8	10	9	9	4	9	7'-7"	4	6	24	5	12	4	4	11	6	4	12	6	4	11	6	4	6	6'-2"	5	12	7'-4"	4'-1"	3'-3"	-	-	4	6	6'-8"	5	12	10'-4"	4'-1"	6'-3"	-	-	0.233	0.253	0.313	0.799	107.26			
2	5	6	8	10	9	9	4	9	7'-5"	4	6	24	4	12	4	4	11	6	4	12	6	4	11	6	4	6	6'-2"	5	12	7'-2"	4'-1"	3'-1"	-	-	4	6	6'-8"	5	12	10'-4"	4'-1"	6'-3"	-	-	0.193	0.253	0.313	0.759	100.53			
3-4	5	6	8	10	9	9	4	9	7'-5"	4	6	24	4	12	4	4	11	6	4	12	6	4	11	6	4	9	6'-2"	5	12	7'-2"	4'-1"	3'-1"	-	-	4	6	6'-8"	5	12	10'-4"	4'-1"	6'-3"	-	-	0.193	0.253	0.313	0.759	97.92			
5-7	5	6	8	10	9	9	4	9	7'-5"	4	6	24	4	12	4	4	11	6	4	12	6	4	11	6	4	9	6'-2"	5	12	6'-9"	3'-8"	3'-1"	5	6'-2"	4	6	6'-8"	5	12	9'-4"	3'-1"	6'-3"	5	6'-8"	0.193	0.253	0.313	0.759	94.71			
8-10	5	6	8	10	9	9	4	9	7'-5"	4	6	24	4	12	4	4	11	6	4	12	6	4	12	6	4	9	6'-2"	5	12	6'-2"	3'-1"	3'-1"	5	6'-2"	4	6	6'-8"	5	12	8'-11"	2'-8"	6'-3"	5	6'-8"	0.193	0.253	0.313	0.759	92.84			
11-15	5	6	8	10	9	9	4	9	7'-5"	4	6	24	4	12	4	4	10	6	4	12	6	4	10	6	4	6	6'-2"	5	12	5'-5"	2'-4"	3'-1"	5	6'-2"	4	6	6'-8"	5	12	8'-7"	2'-4"	6'-3"	5	6'-8"	0.193	0.253	0.313	0.759	93.34			
16-20	5	6	8	10	9	9	4	9	7'-5"	4	6	24	4	12	4	4	10	6	4	12	6	4	10	6	6	9	6'-2"	5	12	5'-4"	2'-3"	3'-1"	5	6'-2"	6	9	6'-8"	5	12	8'-6"	2'-3"	6'-3"	5	6'-8"	0.193	0.253	0.313	0.759	102.50			
21-25	5	6	8	10	9	9	4	12	7'-5"	4	6	24	4	12	4	4	18	4	4	12	6	4	12	6	4	9	6	6	9	6'-2"	4	6	4'-10"	2'-1"	2'-9"	4	6'-2"	5	6	6'-8"	4	6	8'-5"	2'-2"	6'-3"	4	6'-8"	0.193	0.253	0.313	0.759	102.63
26-30	5	6	8	10	9	9	4	9	7'-5"	4	6	24	4	12	4	4	18	4	4	12	6	4	12	6	4	9	6	5	6	6'-2"	4	6	4'-10"	2'-1"	2'-9"	4	6'-2"	7	9	6'-8"	4	6	8'-5"	2'-2"	6'-3"	4	6'-8"	0.193	0.253	0.313	0.759	110.79
31-35	5	6	8	10.5	9	9	4	9	7'-5"	4	6	24	4	12	4	4	18	4	4	12	6	4	12	6	4	9	6	7	9	6'-2"	4	6	4'-9"	2'-1"	2'-8"	4	6'-2"	6	6	6'-8"	4	6	8'-6"	2'-2"	6'-4"	4	6'-8"	0.193	0.263	0.313	0.769	116.63
36-40	5	6	8.5	11	9.5	9	5	12	7'-6"	4	6	24	4	12	4	4	17	4	4	12	6	4	12	6	4	9	6	7	9	6'-3"	4	6	4'-10"	2'-1"	2'-9"	4	6'-3"	6	6	6'-9"	4	6	8'-7"	2'-3"	6'-4"	4	6'-9"	0.206	0.278	0.330	0.814	120.34
41-45	5	6	9	11.5	10	6	4	6	7'-7"	4	6	24	4	12	4	4	18	4	4	12	6	4	10	6	6	6	6	6	6	6'-4"	4	6	4'-11"	2'-2"	2'-9"	4	6'-4"	6	6	6'-10"	4	6	8'-9"	2'-4"	6'-5"	4	6'-10"	0.220	0.293	0.347	0.860	126.92
46-50	5	6	9.5	12	10.5	6	4	6	7'-8"	4	6	24	4	12	4	4	11	6	4	12	6	4	11	6	6	6	6	6	6	6'-5"	6	12	6'-4"	2'-8"	3'-8"	6	6'-5"	6	6	6'-11"	6	12	9'-0"	2'-7"	6'-5"	6	6'-11"	0.234	0.307	0.366	0.907	142.26
51-55	5	6	10	12.5	11	6	4	6	7'-9"	4	6	24	4	12	4	4	11	6	4	12	6	4	11	6	6	6	6	6	6	6'-6"	6	12	6'-4"	2'-8"	3'-8"	6	6'-6"	6	6	7'-0"	6	12	9'-1"	2'-7"	6'-6"	6	7'-0"	0.248	0.322	0.383	0.953	143.34



- Notes:**
- Dimensions listed on this sheet to be used in conjunction with Sheet RCB G3-20.
 - The k2 and m2 bars horizontal legs may lap in low fill situations.
 - Fill dimensions "S" and "H" are in feet.
 - Dimensions "A", "B", "C", "D", and "Sp." listed in the bar list are in inches.
 - Dimensions "L", "H", "V" are in feet and inches.

LATEST REVISION DATE	APPROVED BY BRIDGE ENGINEER	Standard Design Single Reinforced Concrete Box Culverts July, 2020
Culvert Barrel Details 5' x 6' Barrel Sections		RCB 5-6-20

ENGLISHLRFDDESIGNEDSINGLECULVERTS.DGN - RCB 5-6-20 - THIS SHEET ISSUED 07-2020.