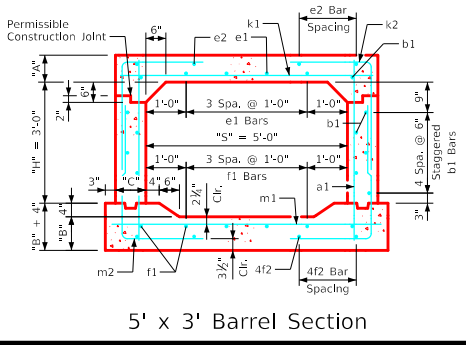
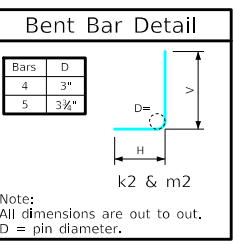


### Variable Dimensions and Quantities for 5' x 3' Barrel Sections

Dimensions										Bar List																		Quantities																					
Fill	S	H	A	B	C	D	Size	Sp.	L	Size	Sp.	No.	Size	Sp.	No.	Size	Sp.	No.	Size	Sp.	No.	Size	Sp.	L	Size	Sp.	L	Size	Sp.	L	Size	Sp.	L	Size	Sp.	L	Slab	Floor	Walls	Total	Steel (LB/FT)								
0	5	3	10	10	9	9	4	9	4'-7	4	6	12	4	12	4	4	11	6	4	12	6	4	11	6	4	6	6'-2	5	12	5'-9	2'-6	3'-3	5	6'-8	4	6	6'-8	5	12	5'-9	2'-6	3'-3	5	6'-8	0.233	0.253	0.146	0.632	74.71
1	5	3	8	10	9	9	4	9	4'-5	4	6	12	4	12	4	4	11	6	4	12	6	4	11	6	4	6	6'-2	5	12	5'-6	2'-5	3'-1	5	6'-2	4	6	6'-8	5	12	5'-8	2'-5	3'-3	5	6'-8	0.193	0.253	0.146	0.592	73.66
2	5	3	8	10	9	9	4	9	4'-5	4	6	12	4	12	4	4	10	6	4	12	6	4	9	6	4	6	6'-2	5	12	5'-4	2'-3	3'-1	5	6'-2	4	6	6'-8	5	12	5'-5	2'-2	3'-3	5	6'-8	0.193	0.253	0.146	0.592	72.71
3-4	5	3	8	10	9	9	4	9	4'-5	4	6	12	4	12	4	4	10	6	4	12	6	4	18	4	4	9	6'-2	5	12	5'-4	2'-3	3'-1	5	6'-2	5	12	6'-8	5	12	5'-4	2'-1	3'-3	5	6'-8	0.193	0.253	0.146	0.592	67.08
5-8	5	3	8	10	9	9	4	9	4'-5	4	6	12	4	12	4	4	10	6	4	12	6	4	18	4	4	9	6'-2	5	12	5'-4	2'-3	3'-1	5	6'-2	4	6	6'-8	5	12	5'-4	2'-1	3'-3	5	6'-8	0.193	0.253	0.146	0.592	68.61
9-10	5	3	8	10	9	9	4	9	4'-5	4	6	12	4	12	4	4	10	6	4	12	6	4	18	4	4	9	6'-2	5	12	5'-4	2'-3	3'-1	5	6'-2	4	6	6'-8	5	12	5'-4	2'-1	3'-3	5	6'-8	0.193	0.253	0.146	0.592	68.61
11-15	5	3	8	10	9	9	4	9	4'-5	4	6	12	4	12	4	4	10	6	4	12	6	4	18	4	4	6	6'-2	5	12	5'-4	2'-3	3'-1	5	6'-2	4	6	6'-8	5	12	5'-4	2'-1	3'-3	5	6'-8	0.193	0.253	0.146	0.592	71.21
16-20	5	3	8	10	9	9	4	9	4'-5	4	6	12	4	12	4	4	10	6	4	12	6	4	18	4	4	6	6'-2	5	12	5'-4	2'-3	3'-1	5	6'-2	4	6	6'-8	5	12	5'-4	2'-1	3'-3	5	6'-8	0.193	0.253	0.146	0.592	71.21
21-25	5	3	8	10	9	9	4	9	4'-5	4	6	12	4	12	4	4	17	4	4	12	6	4	15	4	6	9	6'-2	4	6	4'-9	2'-0	2'-9	4	6'-2	5	6	6'-8	4	6	5'-1	1'-10	3'-3	4	6'-8	0.193	0.253	0.146	0.592	81.89
26-30	5	3	8	10	9	9	4	9	4'-5	4	6	12	4	12	4	4	17	4	4	12	6	4	15	4	5	6	6'-2	4	6	4'-9	2'-0	2'-9	4	6'-2	5	6	6'-8	4	6	5'-1	1'-10	3'-3	4	6'-8	0.193	0.253	0.146	0.592	82.00
31-35	5	3	8	10.5	9	9	5	12	4'-5	4	6	12	4	12	4	4	17	4	4	12	6	4	15	4	7	9	6'-2	4	6	4'-8	2'-0	2'-8	4	6'-2	6	6	6'-8	4	6	5'-2	1'-10	3'-4	4	6'-8	0.193	0.263	0.146	0.602	94.29
36-40	5	3	8.5	11	9	9	5	12	4'-6	4	6	12	4	12	4	4	17	4	4	12	6	4	15	4	6	6	6'-2	4	6	4'-9	2'-0	2'-9	4	6'-2	6	6	6'-8	4	6	5'-2	1'-10	3'-4	4	6'-8	0.203	0.274	0.146	0.623	95.89
41-45	5	3	9.5	11.5	9	9	5	12	4'-8	4	6	12	4	12	4	4	16	4	4	12	6	4	15	4	6	6	6'-2	4	6	4'-9	1'-11	2'-10	4	6'-2	6	6	6'-8	4	6	5'-3	1'-10	3'-5	4	6'-8	0.223	0.285	0.146	0.654	96.47
46-50	5	3	10	12	9	9	5	12	4'-9	4	6	12	4	12	4	4	16	4	4	12	6	4	15	4	6	6	6'-2	4	6	4'-10	1'-11	2'-11	4	6'-2	6	6	6'-8	4	6	5'-3	1'-10	3'-5	4	6'-8	0.233	0.296	0.146	0.675	96.84
51-55	5	3	10.5	12.5	9	9	5	12	4'-10	4	6	12	4	12	4	4	16	4	4	12	6	4	15	4	6	6	6'-2	4	6	4'-10	1'-11	2'-11	4	6'-2	6	6	6'-8	4	6	5'-4	1'-10	3'-6	4	6'-8	0.243	0.307	0.146	0.696	97.26



- Notes:**
- Dimensions listed on this sheet to be used in conjunction with Sheet RCB G3-20.
  - The k2 and m2 bars horizontal legs may lap in low fill situations.
  - Fill, dimensions "S" and "H" are in feet.
  - Dimensions "A", "B", "C", "D", and "Sp." listed in the bar list are in inches.
  - Dimensions "L", "H", "V" are in feet and inches.

LATEST REVISION DATE	APPROVED BY BRIDGE ENGINEER <i>[Signature]</i>	<b>IOWADOT Highway Division</b>	
		Standard Design <b>Single Reinforced Concrete Box Culverts</b> July, 2020	
		Culvert Barrel Details 5' x 3' Barrel Sections	RCB 5-3-20

ENGLISHLRFDDESIGNEDSINGLECULVERTS.DGN - RCB 5-3-20 - THIS SHEET ISSUED 07-2020.