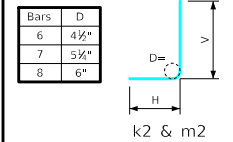


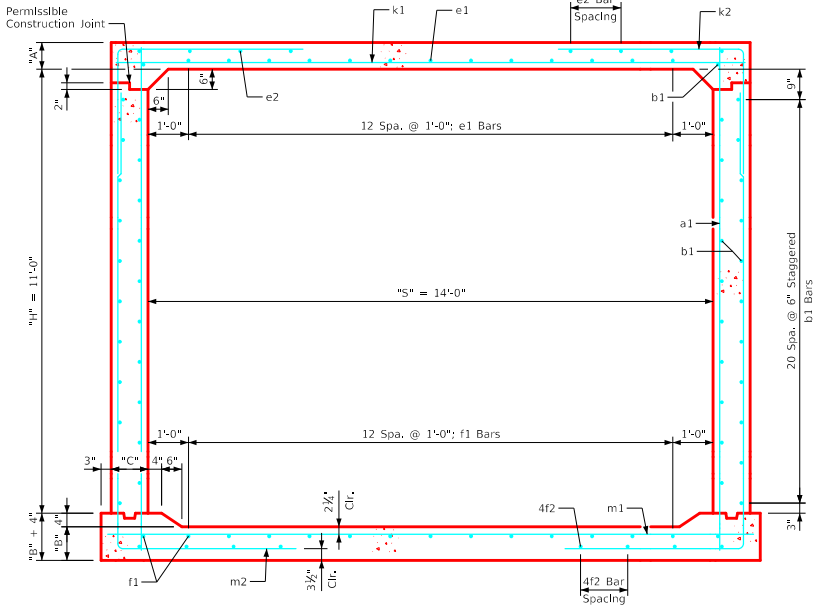
Variable Dimensions and Quantities for 14' x 11' Barrel Sections

Dimensions										Bar List																		Quantities																					
Fill	S	H	A	B	C	D	a1		b1		e1		e2		f1		f2		k1		k2		k9		m1		m2		m9		Concrete (CY/FT)				Steel (LB/FT)														
0	1	2	3-5	6-8	9-10	11-13	14-16	Size	Sp.	L	Size	Sp.	No.	Size	Sp.	No.	Size	Sp.	No.	Size	Sp.	L	Size	Sp.	L	Size	Sp.	L	Size	Sp.	L	Size	Sp.	Slab	Floor	Walls	Total												
0	14	11	14	14.5	11	6	4	6	13'-3	4	6	44	5	12	13	4	15	12	4	12	15	4	16	10	6	6	15'-6	6	9	13'-0	9'-0	4'-0	-	-	7	9	16'-0	6	9	17'-9	6'-1	11'-8	6	16'-0	0.722	0.770	0.723	2.215	325.37
1	14	11	13.5	14.5	11	6	4	6	13'-3	4	6	44	5	12	13	4	15	12	4	12	15	4	17	10	6	6	15'-6	6	9	12'-11	9'-0	3'-11	-	-	7	9	16'-0	6	9	18'-1	6'-5	11'-8	6	16'-0	0.697	0.770	0.723	2.190	326.39
2	14	11	9	10.5	11	9	4	12	12'-6	4	6	44	6	12	13	4	14	10	4	12	15	4	18	8	7	6	15'-6	8	9	10'-0	5'-8	4'-4	8	15'-6	7	6	16'-0	8	9	16'-7	5'-3	11'-4	8	16'-0	0.477	0.568	0.723	1.768	420.32
3-5	14	11	8.5	10.5	11	9	4	12	12'-6	4	6	44	4	12	13	4	17	8	4	12	15	4	16	8	7	6	15'-6	8	9	9'-4	5'-1	4'-3	8	15'-6	7	6	16'-0	8	9	16'-3	4'-11	11'-4	8	16'-0	0.453	0.568	0.723	1.744	400.82
6-8	14	11	9.5	12.5	11	9	4	12	12'-9	4	6	44	4	12	13	4	14	8	4	12	15	4	14	8	7	6	15'-6	6	6	7'-11	4'-4	3'-7	6	15'-6	8	6	16'-0	6	6	15'-10	4'-4	11'-6	6	16'-0	0.502	0.669	0.723	1.894	373.53
9-10	14	11	10	12.5	11	9	4	9	12'-9	4	6	44	4	12	13	4	13	8	4	12	15	4	13	8	8	6	15'-6	6	6	8'-2	4'-1	4'-1	6	15'-6	8	6	16'-0	6	6	15'-7	4'-1	11'-6	6	16'-0	0.526	0.669	0.723	1.918	398.61
11-13	14	11	11.5	14.5	11	9	5	12	13'-1	4	6	44	4	12	13	4	12	8	4	12	15	4	12	8	8	6	15'-6	6	6	7'-10	3'-11	3'-11	6	15'-6	8	6	16'-0	6	6	15'-7	3'-11	11'-8	6	16'-0	0.600	0.770	0.723	2.093	401.71
14-16	14	11	12.5	15	11	6	4	6	13'-2	4	6	44	4	12	13	4	18	6	4	12	15	4	18	6	8	6	15'-6	7	9	8'-0	3'-9	4'-3	7	15'-6	9	6	16'-0	7	9	15'-5	3'-9	11'-8	7	16'-0	0.648	0.795	0.723	2.166	421.76

Bent Bar Detail



Note:
All dimensions are out to out.
D = pin diameter.



14' x 11' Barrel Section

- Notes:
- Dimensions listed on this sheet to be used in conjunction with Sheet RCB G3-20.
 - The k2 and m2 bars horizontal legs may lap in low fill situations.
 - Fill, dimensions "S" and "H" are in feet.
 - Dimensions "A", "B", "C", "D", and "Sp." listed in the bar list are in inches.
 - Dimensions "L", "H", "V" are in feet and inches.

LATEST REVISION DATE	 APPROVED BY BRIDGE ENGINEER		
		Standard Design Single Reinforced Concrete Box Culverts July, 2020	
		Culvert Barrel Details 14' x 11' Barrel Sections	RCB 14-11-20

ENGLISHLRFD\SIGNEDSINGLECULVERTS.DGN - RCB 14-11-20 - THIS SHEET ISSUED 07-2020.