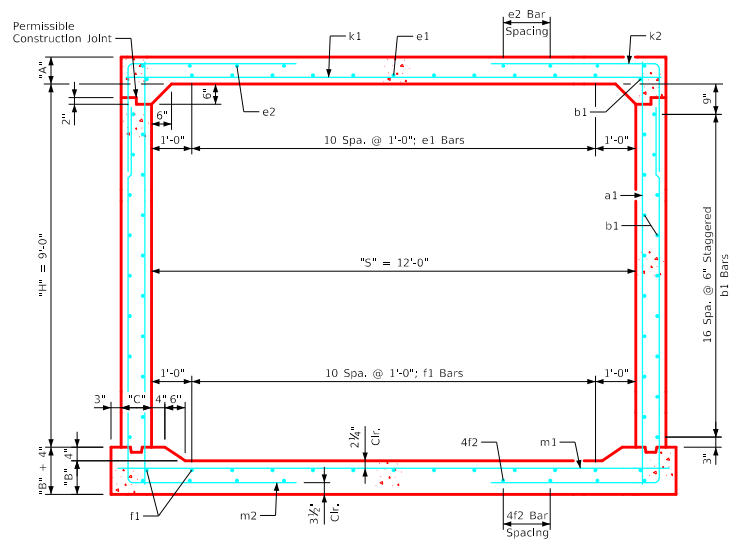
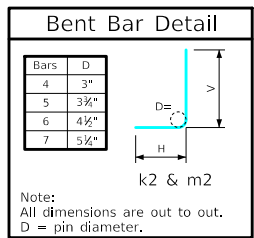


Variable Dimensions and Quantities for 12' x 9' Barrel Sections

Dimensions										Bar List																			Quantities																				
Fill	S	H	A	B	C	D	a1			b1			e1			e2			f1			f2			k1			k2			k9			m1		m2		m9		Concrete (CY/FT)				Steel (LB/FT)					
0	1	2	3-5	6-7	8-10	11-15	16-20	21-25	26-30	31-35	36-40	41-45	46-50	51-55	Size	Sp.	L	Size	Sp.	No.	Size	Sp.	No.	Size	Sp.	No.	Size	Sp.	No.	Size	Sp.	L	Size	Sp.	L	Size	Sp.	L	Size	Sp.	L	Size	Sp.	L	Slab	Floor	Walls	Total	
0	12	9	13.5	13.5	9	9	4	12	11'-2	4	6	36	5	12	11	4	16	10	4	12	13	4	14	10	7	9	13'-2	5	6	11'-1	7'-7	3'-6	-	-	7	9	13'-8	5	6	14'-10	5'-3	9'-7	5	13'-8	0.595	0.620	0.479	1.694	259.21
1	12	9	12.5	13	9	6	4	6	11'-0	4	6	36	5	12	11	4	16	10	4	12	13	4	14	10	7	9	13'-2	4	6	10'-6	7'-5	3'-1	-	-	7	9	13'-8	5	6	14'-11	5'-5	9'-6	5	13'-8	0.553	0.598	0.479	1.630	255.21
2	12	9	8.5	10.5	9	6	4	6	10'-6	4	6	36	6	12	11	4	16	8	4	12	13	4	15	8	7	6	13'-2	5	6	7'-10	4'-9	3'-1	5	13'-2	7	6	13'-8	5	6	13'-8	4'-4	9'-4	5	13'-8	0.387	0.490	0.479	1.356	290.92
3-5	12	9	8.5	10.5	9	9	5	12	10'-6	4	6	36	4	12	11	4	14	8	4	12	13	4	14	8	8	9	13'-2	5	6	7'-3	4'-2	3'-1	5	13'-2	7	6	13'-8	5	6	13'-5	4'-1	9'-4	5	13'-8	0.387	0.490	0.479	1.356	267.26
6-7	12	9	8.5	10.5	9	9	4	12	10'-6	4	6	36	4	12	11	4	13	8	4	12	13	4	12	8	7	6	13'-2	7	9	7'-10	3'-11	3'-11	7	13'-2	7	6	13'-8	7	9	12'-11	3'-5	9'-6	7	13'-8	0.387	0.490	0.479	1.356	297.53
8-10	12	9	9	12.5	9	9	4	12	10'-8	4	6	36	4	12	11	4	13	8	4	12	13	4	17	6	7	6	13'-2	7	9	7'-10	3'-11	3'-11	7	13'-2	7	6	13'-8	7	9	12'-11	3'-5	9'-6	7	13'-8	0.407	0.577	0.479	1.463	295.97
11-15	12	9	10.5	13	9	9	4	12	10'-10	4	6	36	4	12	11	4	16	6	4	12	13	4	16	6	8	6	13'-2	7	9	7'-4	3'-3	4'-1	7	13'-2	8	6	13'-8	7	9	12'-9	3'-3	9'-6	7	13'-8	0.470	0.598	0.479	1.547	325.11
16-20	12	9	12.5	15	9.5	9	4	12	11'-2	4	6	36	4	12	11	4	13	6	4	12	13	4	14	6	8	6	13'-3	7	9	7'-2	2'-11	4'-3	7	13'-3	8	6	13'-8	7	9	12'-8	3'-0	9'-8	7	13'-9	0.558	0.690	0.506	1.754	325.05
21-25	12	9	14.5	17	10.5	9	6	9	11'-6	4	6	36	4	12	11	4	14	6	4	12	13	4	14	6	8	6	13'-5	7	9	7'-6	3'-1	4'-5	7	13'-5	9	6	13'-11	6	9	13'-0	3'-2	9'-10	6	13'-11	0.652	0.786	0.560	1.998	362.29
26-30	12	9	16.5	19	12	9	5	12	11'-10	4	6	36	4	12	11	4	16	6	4	12	13	4	15	6	9	6	13'-8	7	9	8'-2	3'-7	4'-7	7	13'-8	9	6	14'-2	7	9	13'-4	3'-4	10'-0	7	14'-2	0.753	0.892	0.640	2.285	390.37
31-35	12	9	18	20.5	13	9	4	9	12'-1	4	6	36	4	12	11	4	15	6	4	12	13	4	15	6	9	6	13'-10	6	6	7'-9	3'-5	4'-4	6	13'-10	9	6	14'-4	6	6	13'-8	3'-6	10'-2	6	14'-4	0.830	0.971	0.693	2.494	396.00
36-40	12	9	19.5	22	14	9	4	9	12'-4	4	6	36	4	12	11	4	15	6	5	12	13	4	16	6	9	6	14'-0	6	6	8'-1	3'-7	4'-6	6	14'-0	9	6	14'-6	6	6	13'-11	3'-8	10'-3	6	14'-6	0.908	1.053	0.746	2.707	407.16
41-45	12	9	21	23.5	14.5	9	5	12	12'-7	4	6	36	4	12	11	4	16	6	5	12	13	4	16	6	9	6	14'-1	6	6	8'-4	3'-9	4'-7	6	14'-1	9	6	14'-7	6	6	14'-3	3'-10	10'-5	6	14'-7	0.981	1.128	0.772	2.881	416.71
46-50	12	9	22.5	25	15.5	9	6	12	12'-10	4	6	36	5	12	11	4	16	6	5	12	13	4	17	6	9	6	14'-3	7	9	9'-0	3'-11	5'-1	7	14'-3	9	6	14'-9	7	9	14'-6	4'-0	10'-6	7	14'-9	1.062	1.212	0.825	3.099	433.11
51-55	12	9	24	26.5	16.5	6	4	6	13'-1	4	6	36	5	12	11	4	17	6	5	12	13	4	17	6	10	6	14'-5	6	6	8'-11	4'-1	4'-10	6	14'-5	10	6	14'-11	6	6	14'-10	4'-2	10'-8	6	14'-11	1.144	1.298	0.878	3.320	494.18



- Notes:**
- Dimensions listed on this sheet to be used in conjunction with Sheet RCB G3-20.
 - The k2 and m2 bars horizontal legs may lap in low fill situations.
 - Fill, dimensions "S" and "H" are in feet.
 - Dimensions "A", "B", "C", "D", and "Sp." listed in the bar list are in inches.
 - Dimensions "L", "H", "V" are in feet and inches.

LATEST REVISION DATE	APPROVED BY BRIDGE ENGINEER	Standard Design Single Reinforced Concrete Box Culverts July, 2020
Culvert Barrel Details		RCB 12-9-20
12' x 9' Barrel Sections		

ENGLISHLRFDDESIGNEDSINGLECULVERTS.DGN - RCB 12-9-20 - THIS SHEET ISSUED 07-2020.