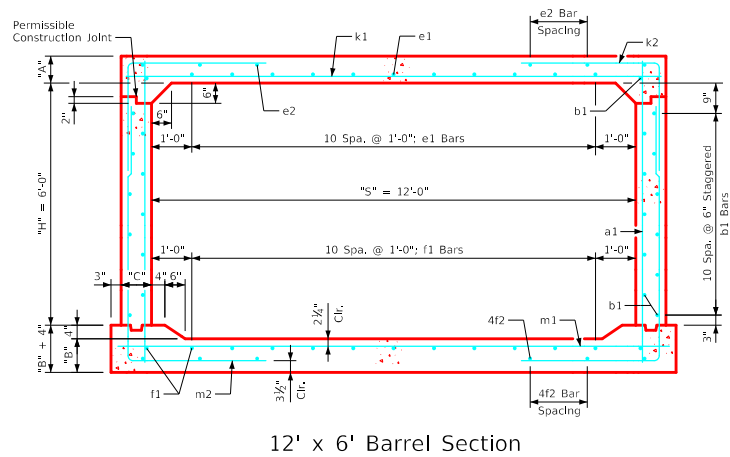
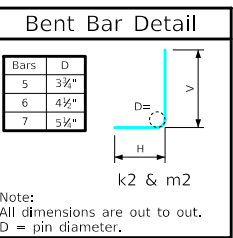


### Variable Dimensions and Quantities for 12' x 6' Barrel Sections

Dimensions										Bar List																		Quantities																					
Fill	S	H	A	B	C	D	a1		b1		e1		e2		f1		f2		k1		k2		k9		m1		m2		m9		Concrete (CY/FT)				Steel (LB/FT)														
0	1	2	3-7	8-9	10	11-15	16-20	21-25	26-30	31-35	36-40	41-45	46-50	51-55	Size	Sp.	No.	Size	Sp.	No.	Size	Sp.	No.	Size	Sp.	No.	Size	Sp.	No.	Size	Sp.	No.	Size	Sp.	No.	Slab	Floor	Walls	Total										
12	6	13.5	13	9	9	9	4	12	8'-1	4	6	24	5	12	11	4	17	6	4	12	13	4	13	8	8	12	13'-2	5	6	7'-2	3'-7	3'-7	5	13'-2	7	9	13'-8	5	6	10'-5	3'-11	6'-6	5	13'-8	0.595	0.598	0.313	1.506	211.13
12	6	12.5	13	9	9	9	4	12	8'-0	4	6	24	5	12	11	4	18	6	4	12	13	4	17	6	7	9	13'-2	5	6	7'-2	3'-7	3'-7	5	13'-2	7	9	13'-8	5	6	10'-0	3'-6	6'-6	5	13'-8	0.553	0.598	0.313	1.464	205.32
12	6	8.5	10.5	9	6	6	4	6	7'-6	4	6	24	5	12	11	4	17	6	4	12	13	4	17	6	8	9	13'-2	5	6	7'-0	3'-6	3'-6	5	13'-2	6	6	13'-8	5	6	9'-10	3'-6	6'-4	5	13'-8	0.387	0.490	0.313	1.190	227.11
12	6	8.5	10.5	9	6	6	4	6	7'-6	4	6	24	4	12	11	4	17	6	4	12	13	4	17	6	8	9	13'-2	5	6	6'-10	3'-5	3'-5	5	13'-2	7	6	13'-8	5	6	9'-9	3'-5	6'-4	5	13'-8	0.387	0.490	0.313	1.190	237.00
12	6	8.5	10.5	9	9	9	4	12	7'-6	4	6	24	4	12	11	4	16	6	4	12	13	4	16	6	7	6	13'-2	7	9	7'-3	3'-4	3'-11	7	13'-2	7	6	13'-8	7	9	9'-8	3'-4	6'-4	7	13'-8	0.387	0.490	0.313	1.190	260.50
12	6	9	11	9	6	6	4	6	7'-7	4	6	24	4	12	11	4	15	6	4	12	13	4	15	6	7	6	13'-2	5	6	6'-4	3'-2	3'-2	5	13'-2	7	6	13'-8	6	6	9'-5	3'-1	6'-4	6	13'-8	0.407	0.512	0.313	1.232	257.00
12	6	10.5	12.5	9	9	9	4	12	7'-10	4	6	24	4	12	11	4	13	6	4	12	13	4	13	6	8	6	13'-2	7	9	6'-11	2'-10	4'-1	7	13'-2	8	6	13'-8	7	9	9'-4	2'-10	6'-6	7	13'-8	0.470	0.577	0.313	1.360	291.21
12	6	12.5	15	9	6	6	4	6	8'-2	4	6	24	4	12	11	4	11	6	4	12	13	4	11	6	8	6	13'-2	5	6	5'-11	2'-5	3'-6	5	13'-2	8	6	13'-8	5	6	9'-1	2'-5	6'-8	5	13'-8	0.553	0.685	0.313	1.551	271.61
12	6	14.5	17	9.5	9	9	6	12	8'-6	4	6	24	4	12	11	4	11	6	4	12	13	4	11	6	9	6	13'-3	6	9	6'-7	2'-6	4'-1	6	13'-3	9	6	13'-9	6	9	9'-5	2'-7	6'-10	6	13'-9	0.642	0.777	0.330	1.749	321.13
12	6	16.5	18.5	10.5	6	6	4	6	8'-10	4	6	24	4	12	11	4	11	6	4	12	13	4	12	6	9	6	13'-5	5	6	6'-5	2'-8	3'-9	5	13'-5	9	6	13'-11	5	6	9'-9	2'-9	7'-0	5	13'-11	0.736	0.852	0.366	1.954	321.47
12	6	18	20.5	11	6	6	4	6	9'-1	4	6	24	4	12	11	4	12	6	4	12	13	4	12	6	9	6	13'-6	5	6	6'-9	2'-10	3'-11	5	13'-6	9	6	14'-0	5	6	10'-0	2'-10	7'-2	5	14'-0	0.806	0.946	0.383	2.135	325.74
12	6	19.5	22	12	9	6	6	9	9'-4	4	6	24	4	12	11	4	14	6	5	12	13	4	13	6	9	6	13'-8	6	9	7'-9	3'-3	4'-6	6	13'-8	9	6	14'-2	6	9	10'-3	3'-0	7'-3	6	14'-2	0.883	1.026	0.418	2.327	351.61
12	6	21	23.5	12.5	9	6	12	9'-7	4	6	24	4	12	11	4	13	6	5	12	13	4	13	6	9	6	13'-9	5	6	7'-3	3'-1	4'-2	5	13'-9	9	6	14'-3	5	6	10'-7	3'-2	7'-5	5	14'-3	0.954	1.100	0.435	2.489	344.00	
12	6	22.5	25	13	9	6	9	9'-10	4	6	24	5	12	11	4	14	6	5	12	13	4	14	6	10	6	13'-10	6	9	8'-1	3'-4	4'-9	6	13'-10	10	6	14'-4	6	9	10'-10	3'-4	7'-6	6	14'-4	1.026	1.175	0.452	2.653	415.39	
12	6	24	26.5	13.5	9	6	12	10'-1	4	6	24	5	12	11	4	14	6	5	12	13	4	14	6	10	6	13'-11	5	6	7'-10	3'-5	4'-5	5	13'-11	10	6	14'-5	5	6	11'-1	3'-5	7'-8	5	14'-5	1.100	1.251	0.469	2.820	408.29	



- Notes:**
- Dimensions listed on this sheet to be used in conjunction with Sheet RCB G3-20.
  - The k2 and m2 bars horizontal legs may lap in low fill situations.
  - Fill, dimensions "S" and "H" are in feet.
  - Dimensions "A", "B", "C", "D", and "Sp." listed in the bar list are in inches.
  - Dimensions "L", "H", "V" are in feet and inches.

LATEST REVISION DATE	 APPROVED BY BRIDGE ENGINEER		
		Standard Design <b>Single Reinforced Concrete Box Culverts</b> July, 2020	
		<b>Culvert Barrel Details</b> 12' x 6' Barrel Sections	<b>RCB 12-6-20</b>

ENGLISHLRFDDESIGNEDSINGLECULVERTS.DGN - RCB 12-6-20 - THIS SHEET ISSUED 07-2020.