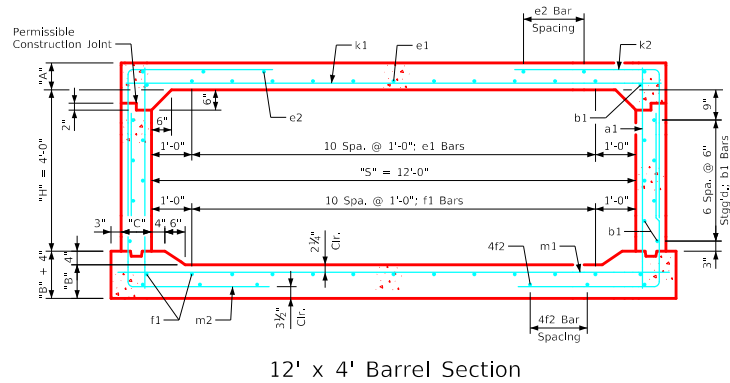
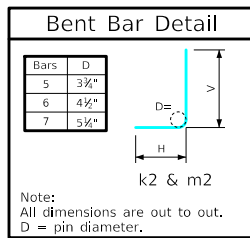


Variable Dimensions and Quantities for 12' x 4' Barrel Sections

Dimensions										Bar List																		Quantities																					
Fill	S	H	A	B	C	D	a1		b1		e1		e2		f1		f2		k1		k2		k9		m1		m2		m9		Concrete (CY/FT)				Sleeft (LB/FT)														
Size	Sp.	L	Size	Sp.	No.	Size	Sp.	No.	Size	Sp.	No.	Size	Sp.	No.	Size	Sp.	No.	Size	Sp.	L	Size	Sp.	L	Size	Sp.	L	Size	Sp.	L	Size	Sp.	Slab	Floor	Walls	Total														
0	12	4	13.5	13	9	9	4	9	6'-1"	4	6	16	5	12	11	4	14	6	4	12	13	4	13	8	8	12	13'-2"	6	9	7'-0"	3'-0"	4'-0"	6	13'-2"	5	6	13'-8"	6	9	8'-5"	3'-11"	4'-6"	6	13'-8"	0.595	0.598	0.202	1.395	184.26
1	12	4	12.5	13	9	9	4	12	6'-0"	4	6	16	5	12	11	4	17	6	4	12	13	4	17	6	8	12	13'-2"	5	6	7'-0"	3'-6"	3'-6"	5	13'-2"	5	6	13'-8"	5	6	7'-11"	3'-5"	4'-6"	5	13'-8"	0.553	0.598	0.202	1.353	178.11
2-3	12	4	8.5	10	9	9	4	12	5'-5"	4	6	16	5	12	11	4	13	8	4	12	13	4	14	8	6	6	13'-2"	7	9	7'-10"	3'-11"	3'-11"	7	13'-2"	6	6	13'-8"	7	9	8'-6"	4'-3"	4'-3"	7	13'-8"	0.387	0.469	0.202	1.058	226.29
4-5	12	4	8	10	9	9	4	12	5'-5"	4	6	16	4	12	11	4	13	8	4	12	13	4	17	6	6	6	13'-2"	7	9	7'-10"	3'-11"	3'-11"	7	13'-2"	6	6	13'-8"	7	9	7'-9"	3'-6"	4'-3"	7	13'-8"	0.366	0.469	0.202	1.037	216.61
6-7	12	4	8	10.5	9	6	4	6	5'-5"	4	6	16	4	12	11	4	17	6	4	12	13	4	16	6	6	6	13'-2"	6	6	7'-0"	3'-6"	3'-6"	6	13'-2"	7	6	13'-8"	5	6	7'-7"	3'-3"	4'-4"	5	13'-8"	0.366	0.490	0.202	1.058	222.08
8-10	12	4	9	10.5	9	9	4	12	5'-6"	4	6	16	4	12	11	4	18	6	4	12	13	4	16	6	7	6	13'-2"	6	6	7'-2"	3'-7"	3'-7"	6	13'-2"	7	6	13'-8"	6	6	7'-7"	3'-3"	4'-4"	6	13'-8"	0.407	0.490	0.202	1.099	245.05
11-15	12	4	10.5	12.5	9	9	4	12	5'-10"	4	6	16	4	12	11	4	13	6	4	12	13	4	13	6	7	6	13'-2"	6	6	6'-6"	2'-10"	3'-8"	6	13'-2"	7	6	13'-8"	6	6	7'-3"	2'-9"	4'-6"	6	13'-8"	0.470	0.577	0.202	1.249	239.42
16-20	12	4	12.5	15	9	9	4	12	6'-2"	4	6	16	4	12	11	4	13	6	4	12	13	4	13	6	8	6	13'-2"	7	9	7'-0"	2'-9"	4'-3"	7	13'-2"	8	6	13'-8"	7	9	7'-5"	2'-9"	4'-8"	7	13'-8"	0.553	0.685	0.202	1.440	273.18
21-25	12	4	14.5	17	10	9	6	9	6'-6"	4	6	16	4	12	11	4	13	6	4	12	13	4	11	6	8	6	13'-4"	7	9	7'-3"	2'-10"	4'-5"	7	13'-4"	8	6	13'-10"	6	9	7'-5"	2'-7"	4'-10"	6	13'-10"	0.647	0.782	0.224	1.653	282.61
26-30	12	4	16.5	18.5	11	9	6	9	6'-10"	4	6	16	4	12	11	4	12	6	4	12	13	4	12	6	8	6	13'-6"	5	6	6'-6"	2'-9"	3'-9"	5	13'-6"	8	6	14'-0"	5	6	7'-9"	2'-9"	5'-0"	5	14'-0"	0.742	0.858	0.247	1.847	272.50
31-35	12	4	18	20.5	11.5	9	4	12	7'-1"	4	6	16	4	12	11	4	14	6	4	12	13	4	12	6	9	6	13'-7"	6	6	7'-6"	3'-2"	4'-4"	6	13'-7"	9	6	14'-1"	6	6	8'-0"	2'-10"	5'-2"	6	14'-1"	0.812	0.952	0.258	2.022	331.29
36-40	12	4	19.5	22	12	9	5	12	7'-4"	4	6	16	4	12	11	4	16	6	5	12	13	4	13	6	9	6	13'-8"	7	9	8'-5"	3'-7"	4'-10"	7	13'-8"	9	6	14'-2"	7	9	8'-3"	3'-0"	5'-3"	7	14'-2"	0.883	1.026	0.269	2.178	344.79
41-45	12	4	21	23.5	13	9	4	9	7'-7"	4	6	16	4	12	11	4	14	6	5	12	13	4	13	6	9	6	13'-10"	6	6	7'-11"	3'-4"	4'-7"	6	13'-10"	9	6	14'-4"	6	6	8'-7"	3'-2"	5'-5"	6	14'-4"	0.961	1.107	0.292	2.360	349.61
46-50	12	4	22.5	25	13.5	6	4	6	7'-10"	4	6	16	5	12	11	4	16	6	5	12	13	4	13	6	9	6	13'-11"	7	9	8'-10"	3'-9"	5'-1"	7	13'-11"	9	6	14'-5"	7	9	8'-9"	3'-3"	5'-6"	7	14'-5"	1.034	1.182	0.303	2.519	362.79
51-55	12	4	24	26	14	9	6	9	8'-1"	4	6	16	5	12	11	4	14	6	5	12	13	4	14	6	10	6	14'-0"	5	6	7'-9"	3'-4"	4'-5"	5	14'-0"	10	6	14'-6"	5	6	8'-11"	3'-4"	5'-7"	5	14'-6"	1.107	1.236	0.314	2.657	396.45



- Notes:**
- Dimensions listed on this sheet to be used in conjunction with Sheet RCB G3-20.
 - The k2 and m2 bars horizontal legs may lap in low fill situations.
 - Fill, dimensions "S" and "H" are in feet.
 - Dimensions "A", "B", "C", "D", and "Sp." listed in the bar list are in inches.
 - Dimensions "L", "H", "V" are in feet and inches.

LATEST REVISION DATE	APPROVED BY BRIDGE ENGINEER	Standard Design Single Reinforced Concrete Box Culverts July, 2020	RCB 12-4-20
		Culvert Barrel Details 12' x 4' Barrel Sections	
		12' x 4' Barrel Sections	

ENGLISHLRFDDESIGNEDSINGLECULVERTS.DGN - RCB 12-4-20 - THIS SHEET ISSUED 07-2020.