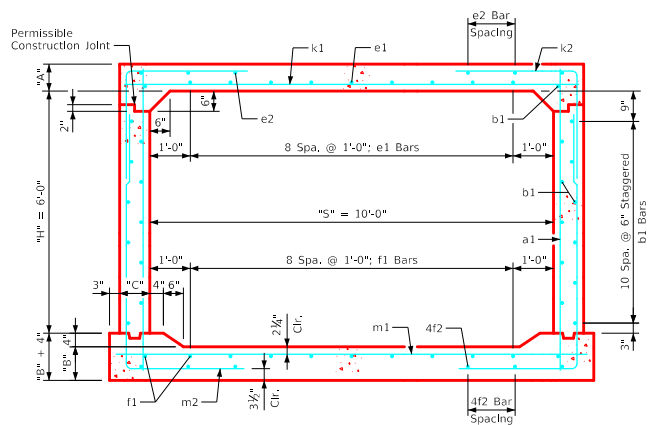
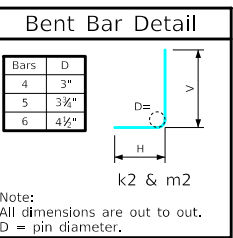


Variable Dimensions and Quantities for 10' x 6' Barrel Sections

Dimensions										Bar List																		Quantities																					
Fill	S	H	A	B	C	D	a1		b1		e1		e2		f1		f2		k1			k2			k9		m1		m2			m9		Concrete (CY/FT)				Steel (LB/FT)											
0	10	6	12	12	9	6	Size	Sp.	L	Size	Sp.	No.	Size	Sp.	No.	Size	Sp.	No.	Size	Sp.	L	Size	Sp.	L	Size	Sp.	L	Size	Sp.	L	Size	Sp.	L	Slab	Floor	Walls	Total												
0	10	6	12	12	9	6	4	6	7'-11	4	6	24	4	12	9	4	13	8	4	12	11	4	13	8	5	6	11'-2	4	6	6'-11	3'-10	3'-1	4	11'-2	5	6	11'-8	4	6	10'-3	3'-10	6'-5	4	11'-8	0.458	0.481	0.313	1.252	156.42
1	10	6	11.5	12	9	6	4	6	7'-10	4	6	24	4	12	9	4	13	8	4	12	11	4	17	6	5	6	11'-2	4	6	6'-11	3'-11	3'-0	4	11'-2	5	6	11'-8	4	6	9'-10	3'-5	6'-5	4	11'-8	0.441	0.481	0.313	1.235	153.76
2	10	6	8	10	9	9	4	12	7'-5	4	6	24	5	12	9	4	15	6	4	12	11	4	15	6	6	11'-2	5	6	6'-4	3'-2	3'-2	5	11'-2	6	6	11'-8	5	6	9'-5	3'-2	6'-3	5	11'-8	0.316	0.407	0.313	1.036	187.89	
3	10	6	8	10	9	9	4	12	7'-5	4	6	24	4	12	9	4	15	6	4	12	11	4	14	6	7	9	11'-2	5	6	6'-2	3'-1	3'-1	5	11'-2	6	6	11'-8	5	6	9'-3	3'-0	6'-3	5	11'-8	0.316	0.407	0.313	1.036	181.00
4-7	10	6	8	10	9	9	4	12	7'-5	4	6	24	4	12	9	4	15	6	4	12	11	4	14	6	7	9	11'-2	5	6	6'-2	3'-1	3'-1	5	11'-2	6	6	11'-8	5	6	9'-2	2'-11	6'-3	5	11'-8	0.316	0.407	0.313	1.036	180.63
8-10	10	6	8	10.5	9	9	4	12	7'-5	4	6	24	4	12	9	4	15	6	4	12	11	4	13	6	6	6	11'-2	5	6	6'-2	3'-1	3'-1	5	11'-2	7	6	11'-8	5	6	9'-1	2'-9	6'-4	5	11'-8	0.316	0.425	0.313	1.054	195.24
11-15	10	6	8.5	10.5	9	9	5	12	7'-6	4	6	24	4	12	9	4	12	6	4	12	11	4	12	6	7	6	11'-2	5	6	5'-8	2'-7	3'-1	5	11'-2	7	6	11'-8	5	6	8'-11	2'-7	6'-4	5	11'-8	0.334	0.425	0.313	1.072	210.55
16-20	10	6	10.5	13	9	9	4	9	7'-10	4	6	24	4	12	9	4	10	6	4	12	11	4	10	6	7	6	11'-2	5	6	5'-8	2'-4	3'-4	5	11'-2	7	6	11'-8	5	6	8'-10	2'-4	6'-6	5	11'-8	0.405	0.518	0.313	1.236	208.21
21-25	10	6	12.5	14.5	9	9	4	9	8'-2	4	6	24	4	12	9	4	10	6	4	12	11	4	10	6	8	6	11'-2	5	6	5'-8	2'-3	3'-5	5	11'-2	8	6	11'-8	5	6	9'-0	2'-4	6'-8	5	11'-8	0.476	0.574	0.313	1.363	238.50
26-30	10	6	14	16	9	9	4	9	8'-5	4	6	24	4	12	9	4	11	6	4	12	11	4	11	6	8	6	11'-2	6	9	6'-5	2'-5	4'-0	6	11'-2	8	6	11'-8	6	9	9'-2	2'-5	6'-9	6	11'-8	0.529	0.629	0.313	1.471	242.82
31-35	10	6	15	17.5	9.5	9	4	9	8'-7	4	6	24	4	12	9	4	11	6	4	12	11	4	11	6	8	6	11'-3	5	6	6'-3	2'-7	3'-8	5	11'-3	8	6	11'-8	5	6	9'-5	2'-6	6'-11	5	11'-8	0.570	0.690	0.330	1.590	244.42
36-40	10	6	16.5	19	10	9	4	9	8'-10	4	6	24	4	12	9	4	12	6	4	12	11	4	11	6	9	6	11'-4	5	6	6'-6	2'-8	3'-10	5	11'-4	8	6	11'-10	5	6	9'-7	2'-7	7'-0	5	11'-10	0.629	0.752	0.347	1.728	264.29
41-45	10	6	17.5	20	10.5	9	5	12	9'-0	4	6	24	4	12	9	4	11	6	4	12	11	4	11	6	9	6	11'-5	5	6	6'-7	2'-8	3'-11	5	11'-5	9	6	11'-11	5	6	9'-9	2'-8	7'-1	5	11'-11	0.671	0.794	0.366	1.831	287.42
46-50	10	6	19	21	11	9	5	12	9'-3	4	6	24	4	12	9	4	12	6	4	12	11	4	12	6	9	6	11'-6	5	6	6'-9	2'-9	4'-0	5	11'-6	9	6	12'-0	5	6	10'-0	2'-10	7'-2	5	12'-0	0.731	0.839	0.383	1.953	290.89
51-55	10	6	20	22.5	11.5	6	4	6	9'-5	4	6	24	4	12	9	4	14	6	5	12	11	4	12	6	9	6	11'-7	6	9	7'-8	3'-2	4'-6	6	11'-7	9	6	12'-1	6	9	10'-3	2'-11	7'-4	6	12'-1	0.774	0.902	0.400	2.076	306.32



10' x 6' Barrel Section

- Notes:**
- Dimensions listed on this sheet to be used in conjunction with Sheet RCB G3-20.
 - The k2 and m2 bars horizontal legs may lap in low fill situations.
 - Fill, dimensions "S" and "H" are in feet.
 - Dimensions "A", "B", "C", "D", and "Sp." listed in the bar list are in inches.
 - Dimensions "L", "H", "V" are in feet and inches.

LATEST REVISION DATE	APPROVED BY BRIDGE ENGINEER	Standard Design Single Reinforced Concrete Box Culverts July, 2020
Culvert Barrel Details 10' x 6' Barrel Sections		RCB 10-6-20

ENGLISH\RFDSIGNEDSINGLECULVERTS.DGN - RCB 10-6-20 - THIS SHEET ISSUED 07-2020.