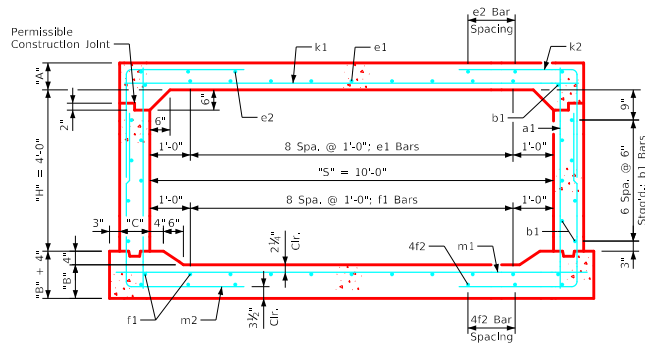
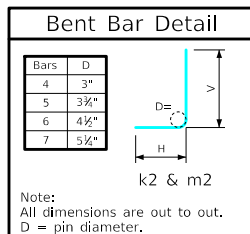


### Variable Dimensions and Quantities for 10' x 4' Barrel Sections

Dimensions										Bar List																		Quantities																					
Fill	S	H	A	B	C	D	a1			b1			e1			e2			f1			f2			k1			k2			k9			m1			m2			m9			Concrete (CY/FT)				Steel (LB/FT)		
							Size	Sp.	L	Size	Sp.	No.	Size	Sp.	No.	Size	Sp.	No.	Size	Sp.	No.	Size	Sp.	No.	Size	Sp.	L	Size	Sp.	L	Size	Sp.	L	Size	Sp.	L	Size	Sp.	L	Slab	Floor	Walls	Total						
0	10	4	12.5	12	9	9	4	12	5*11	4	6	16	4	12	9	4	14	6	4	12	11	4	13	8	6	9	11'-2	6	12	6'-10	2'-11	3'-11	6	11'-2	6	9	11'-8	7	12	8'-3	3'-10	4'-5	7	11'-8	0.476	0.481	0.202	1.159	149.76
1	10	4	11.5	12	9	9	5	12	5*10	4	6	16	4	12	9	4	14	6	4	12	11	4	15	6	6	9	11'-2	4	6	6'-0	3'-0	3'-0	4	11'-2	6	9	11'-8	5	6	7'-6	3'-1	4'-5	5	11'-8	0.441	0.481	0.202	1.124	141.11
2	10	4	8	10	9	9	4	9	5'-5	4	6	16	5	12	9	4	15	6	4	12	11	4	15	6	7	9	11'-2	5	6	6'-4	3'-2	3'-2	5	11'-2	7	9	11'-8	5	6	7'-5	3'-2	4'-3	5	11'-8	0.316	0.407	0.202	0.925	169.32
3	10	4	8	10	9	9	4	12	5'-5	4	6	16	4	12	9	4	15	6	4	12	11	4	14	6	7	9	11'-2	5	6	6'-2	3'-1	3'-1	5	11'-2	5	6	11'-8	5	6	7'-2	2'-11	4'-3	5	11'-8	0.316	0.407	0.202	0.925	153.32
4-6	10	4	8	10	9	9	4	12	5'-5	4	6	16	4	12	9	4	15	6	4	12	11	4	14	6	5	6	11'-2	5	6	6'-2	3'-1	3'-1	5	11'-2	6	6	11'-8	5	6	7'-2	2'-11	4'-3	5	11'-8	0.316	0.407	0.202	0.925	155.92
7-10	10	4	8	10	9	9	4	9	5'-5	4	6	16	4	12	9	4	15	6	4	12	11	4	13	6	6	6	11'-2	5	6	6'-2	3'-1	3'-1	5	11'-2	6	6	11'-8	5	6	7'-1	2'-10	4'-3	5	11'-8	0.316	0.407	0.202	0.925	168.24
11-15	10	4	8.5	10.5	9	6	4	6	5'-6	4	6	16	4	12	9	4	12	6	4	12	11	4	12	6	7	6	11'-2	5	6	5'-8	2'-7	3'-1	5	11'-2	7	6	11'-8	5	6	7'-0	2'-8	4'-4	5	11'-8	0.334	0.425	0.202	0.961	195.79
16-20	10	4	10.5	13	9	6	4	6	5'-10	4	6	16	4	12	9	4	10	6	4	12	11	4	10	6	7	6	11'-2	5	6	5'-8	2'-4	3'-4	5	11'-2	7	6	11'-8	5	6	6'-9	2'-3	4'-6	5	11'-8	0.405	0.518	0.202	1.125	195.63
21-25	10	4	12.5	14.5	9	9	4	9	6'-2	4	6	16	4	12	9	4	9	6	4	12	11	4	9	6	9	9	11'-2	5	6	5'-7	2'-2	3'-5	5	11'-2	8	6	11'-8	5	6	6'-10	2'-2	4'-8	5	11'-8	0.476	0.574	0.202	1.252	212.66
26-30	10	4	14	16	9.5	9	4	9	6'-5	4	6	16	4	12	9	4	9	6	4	12	11	4	10	6	8	6	11'-3	5	6	5'-10	2'-3	3'-7	5	11'-3	8	6	11'-9	5	6	7'-1	2'-4	4'-9	5	11'-9	0.534	0.634	0.213	1.381	223.61
31-35	10	4	15	17.5	10	9	5	12	6'-7	4	6	16	4	12	9	4	12	6	4	12	11	4	10	6	8	6	11'-4	5	6	6'-4	2'-8	3'-8	5	11'-4	8	6	11'-10	5	6	7'-4	2'-5	4'-11	5	11'-10	0.575	0.696	0.224	1.495	230.29
36-40	10	4	16.5	18.5	10.5	9	5	12	6'-10	4	6	16	4	12	9	4	11	6	4	12	11	4	10	6	8	6	11'-5	5	6	6'-5	2'-8	3'-9	5	11'-5	8	6	11'-11	5	6	7'-6	2'-6	5'-0	5	11'-11	0.635	0.738	0.236	1.609	232.79
41-45	10	4	17.5	20	11	6	4	6	7'-0	4	6	16	4	12	9	4	12	6	4	12	11	4	11	6	9	6	11'-6	5	6	6'-8	2'-9	3'-11	5	11'-6	9	6	12'-0	5	6	7'-8	2'-7	5'-1	5	12'-0	0.677	0.800	0.247	1.724	274.29
46-50	10	4	19	21	11.5	9	5	12	7'-3	4	6	16	4	12	9	4	11	6	4	12	11	4	11	6	9	6	11'-7	5	6	6'-9	2'-9	4'-0	5	11'-7	9	6	12'-1	5	6	7'-11	2'-9	5'-2	5	12'-1	0.738	0.845	0.258	1.841	273.66
51-55	10	4	20	22	12	6	4	6	7'-5	4	6	16	4	12	9	4	12	6	5	12	11	4	12	6	9	6	11'-8	5	6	6'-11	2'-10	4'-1	5	11'-8	9	6	12'-2	5	6	8'-1	2'-10	5'-3	5	12'-2	0.781	0.890	0.269	1.940	284.55



- Notes:**
- Dimensions listed on this sheet to be used in conjunction with Sheet RCB G3-20.
  - The k2 and m2 bars horizontal legs may lap in low fill situations.
  - Fill, dimensions "S" and "H" are in feet.
  - Dimensions "A", "B", "C", "D", and "Sp." listed in the bar list are in inches.
  - Dimensions "L", "H", "V" are in feet and inches.

LATEST REVISION DATE	APPROVED BY BRIDGE ENGINEER	Standard Design <b>Single Reinforced Concrete Box Culverts</b> July, 2020
Culvert Barrel Details		RCB 10-4-20
10' x 4' Barrel Sections		

ENGLISHLRFDDESIGNEDSINGLECULVERTS.DGN - RCB 10-4-20 - THIS SHEET ISSUED 07-2020.