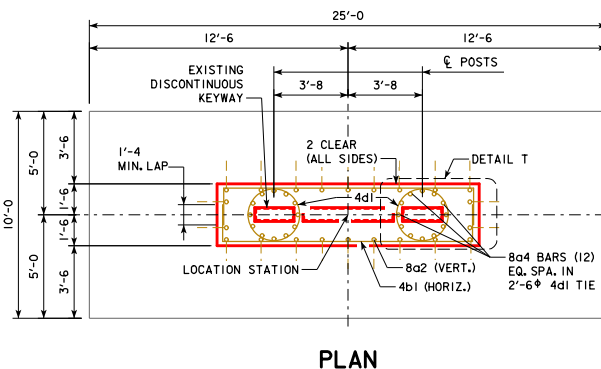
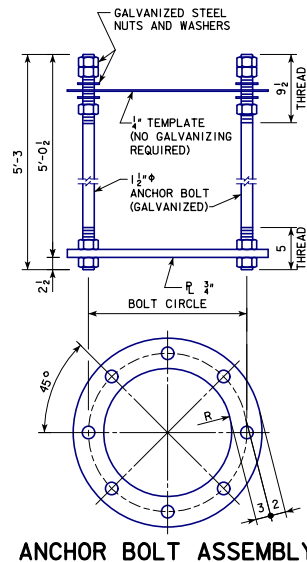
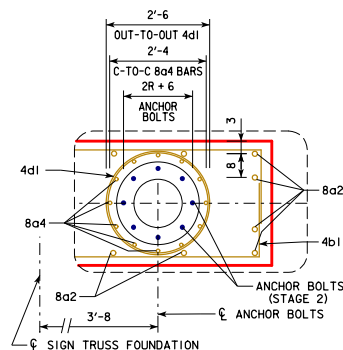


REVISION 07-17 - MODIFIED NOTES, CHANGED BOLT CIRCLE DIMENSION FROM 1'-8 TO 2'-6 TO ACCOUNT FOR VARIATION IN BOLT CIRCLE DIAMETER DEPENDING UPON TRUSS SPAN LENGTH. STEELOVERHEADS(IGNTRUSS).DGN - SOST-20-11 - THIS SHEET ISSUED 03-13.



8a2, 8a4, APPLICABLE 4b1 and APPLICABLE 4d1 BARS ARE TO BE PROVIDED, TRANSPORTED, AND STOCKPILED AS DIRECTED BY THE ENGINEER DURING STAGE 1. OBTAIN, TRANSPORT AND PLACE 8a2, 8a4, APPLICABLE 4b1 and APPLICABLE 4d1 BARS AS DIRECTED BY THE ENGINEER DURING STAGE 2.



GENERAL NOTES:

STRUCTURAL CONCRETE, CLASS C, SHALL BE USED FOR THE FOUNDATION.
TWO ANCHOR BOLT ASSEMBLIES INCLUDING ANCHOR PLATES, TEMPLATES, NUTS (5 PER BOLT) AND WASHERS (2 PER BOLT) ARE REQUIRED PER FOUNDATION.

ALL ANCHOR BOLT MATERIALS AND GALVANIZING SHALL BE IN ACCORDANCE WITH ARTICLE 4187.01, C, 3 OF THE STANDARD SPECIFICATIONS.

ALL MECHANICAL SPlice ASSEMBLIES, 8a2, 8a4, 4b1 and 4d1 BARS ARE TO BE PROVIDED DURING STAGE 1. A TOTAL OF 46 MECHANICAL SPLICES SHALL HAVE BEEN EMBEDDED IN THE TOP OF THE STAGE 1 FOUNDATION STEM WALL. OBTAIN, TRANSPORT AND PLACE 8a2, 8a4, APPLICABLE 4b1 AND APPLICABLE 4d1 BARS AS DIRECTED BY THE ENGINEER DURING STAGE 2.

A RODENT GUARD SHALL BE PLACED AROUND THE BASE PLATE AS DETAILED HEREON.

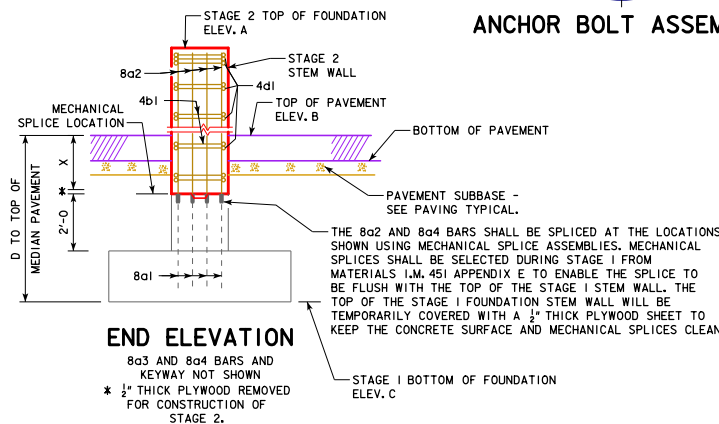
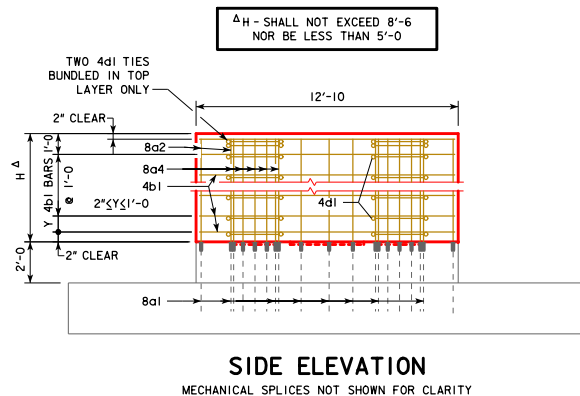
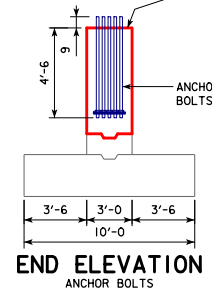
	R	BOLT CIRCLE DIAMETER
FOR 14" POSTS (50'-100' SPANS)	7	1'-8
FOR 16" POSTS (105'-130' SPANS)	8	1'-10

CONCRETE PLACEMENT QUANTITIES

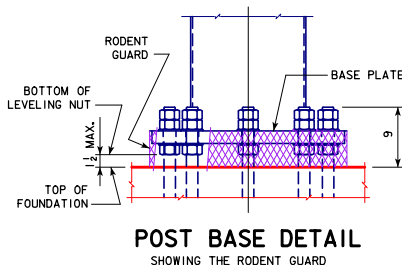
ONE FOUNDATION - STAGE 2

ITEM	C.Y.
WALL (STAGE 2)	(38.5 x H)/27, H IN FT.
FOOTING	---
TOTAL	(38.5 x H)/27, H IN FT.

TOP-OF-WALL ELEVATION IS TO BE SET AT SAME ELEVATION AS HIGH POINT ON ROADWAY OR AS DIRECTED BY THE ENGINEER



ELEV. A = STAGE 2 TOP OF FOUNDATION ELEVATION
ELEV. B = TOP OF PAVEMENT ELEVATION
ELEV. C = STAGE 1 BOTTOM OF FOUNDATION ELEVATION
ELEV. C SHOULD BE SET SO THAT [ELEV. A - ELEV. C] IS A MULTIPLE OF 1'-0".
D = [ELEV. B - ELEV. C]
X = [ELEV. B - ELEV. C - 4.042 FT.]
X SHALL NOT BE LESS THAN THICKNESS OF PAVEMENT PLUS PLYWOOD.
Y SHALL NOT BE LESS THAN 2" NOR GREATER THAN 1'-0".
ELEV. A, ELEV. B AND ELEV. C SHALL BE AS SHOWN ELSEWHERE IN THESE PLANS.



THE RODENT GUARD SHALL BE PLACED AROUND THE BASE PLATE.

THE RODENT GUARD IS STAINLESS STEEL STANDARD GRADE WIRE CLOTH, 1" MAXIMUM OPENING WITH A MINIMUM WIRE DIAMETER OF AWG NO. 16 WITH A MINIMUM 2" LAP.

SECURE WIRE CLOTH TO BASE PLATE AFTER ERECTION WITH 3" STAINLESS STEEL BANDING. THE RODENT GUARD SHALL NOT EXTEND ABOVE THE TOP OF THE BASE PLATE.

SEE SOST-19-11 FOR STAGE 1 FOUNDATION DETAILS.

07-17 LATEST REVISION DATE	APPROVED BY BRIDGE ENGINEER <i>Norman E. McDaniel</i>	IOWA DOT Highway Division STANDARD DESIGN STEEL OVERHEAD SIGN TRUSS SEPTEMBER, 2011
STAGE 2 FOUNDATION DETAILS		SOST-20-11
50'-130' SPANS		