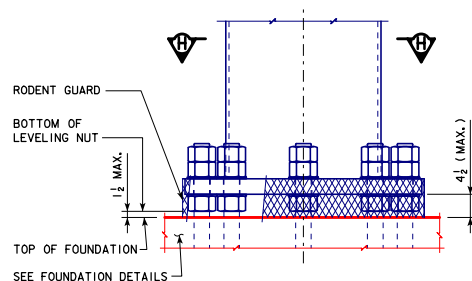


SECTION H-H



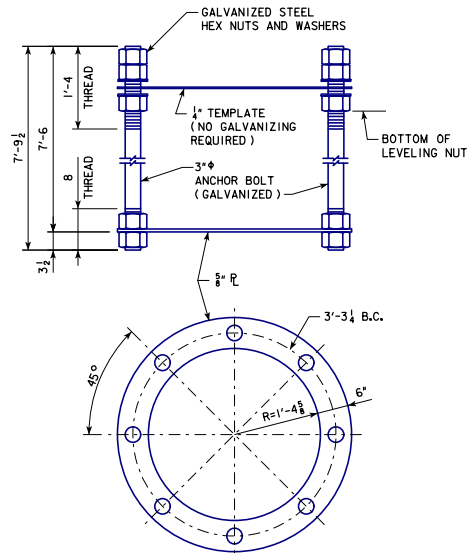
POST BASE DETAIL

SHOWING THE RODENT GUARD

THE RODENT GUARD SHALL BE PLACED AROUND THE BASE PLATE.

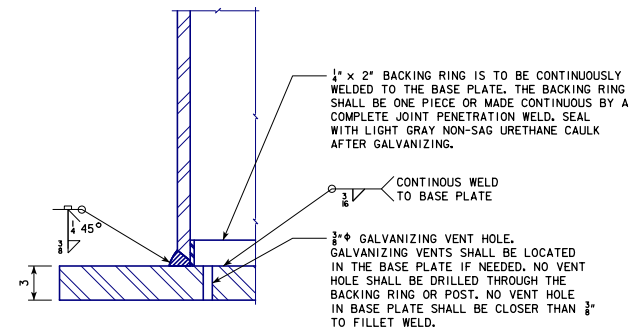
THE RODENT GUARD IS STAINLESS STEEL STANDARD GRADE WIRE CLOTH, $\frac{1}{4}$ " MAXIMUM OPENING WITH A MINIMUM WIRE DIAMETER OF AWG NO. 16 WITH A MINIMUM 2" LAP.

SECURE WIRE CLOTH TO BASE PLATE AFTER ERECTION WITH $\frac{3}{4}$ " STAINLESS STEEL BANDING. THE RODENT GUARD SHALL NOT EXTEND ABOVE THE TOP OF THE BASE PLATE.



ANCHOR BOLT ASSEMBLY

ALL ANCHOR BOLT MATERIALS AND GALVANIZING SHALL BE IN ACCORDANCE WITH ARTICLE 4187.01, C, 3 OF THE STANDARD SPECIFICATIONS.





SECTION J-J

SEE STANDARD SHEET SCST-02-17 FOR LOCATION OF POST BASE DETAIL.

SEE STANDARD SHEET SCST-08-17 FOR SPREAD FOOTING FOUNDATION DETAILS.

SEE STANDARD SHEET SCST-09-17 FOR DRILLED SHAFT FOUNDATION DETAILS.

03-2018 LATEST REVISION DATE	 APPROVED BY BRIDGE ENGINEER		
		STANDARD DESIGN	
		STEEL CANTILEVER SIGN TRUSS	
		JULY, 2017	
		POST BASE SUPPORT DETAILS	SCST-06-17