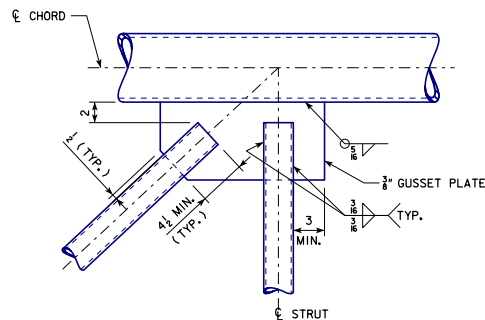
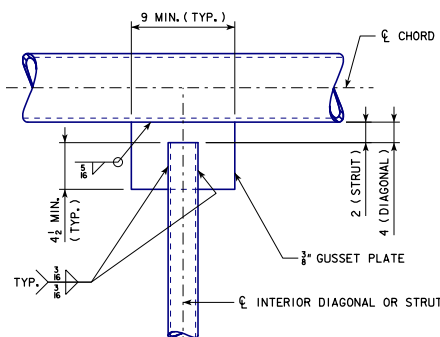


DETAIL A

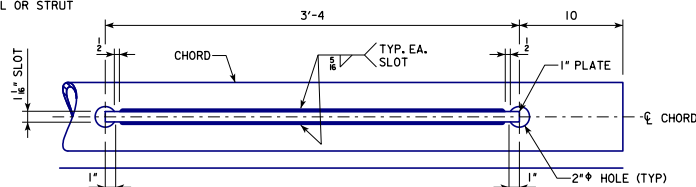


DETAIL B



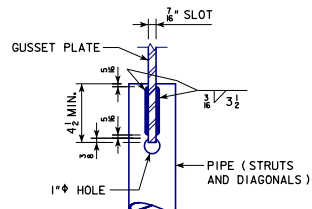
DETAIL C

DETAIL A, DETAIL B, AND DETAIL C
 SHOW CONNECTIONS AT TOP CHORDS.
 CONNECTIONS AT BOTTOM CHORDS
 ARE SIMILAR.



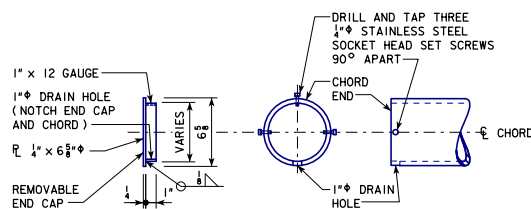
SLOTTED CHORD DETAIL

TYPICAL AT CHORD-TO-1" PLATE CONNECTIONS



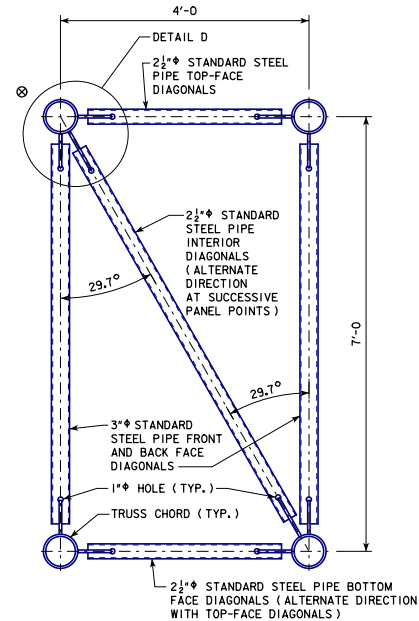
SLOTTED PIPE ENDS

TYPICAL FOR STRUTS AND DIAGONALS

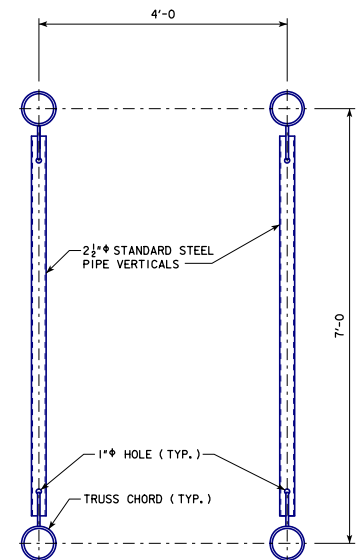


END CAP DETAIL

TYPICAL FOR ENDS OF CHORDS

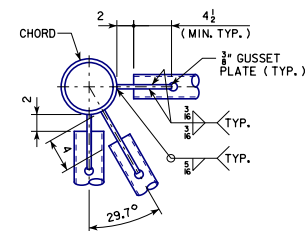


SECTION F-F



SECTION G-G

⊗ INDICATES THE CONNECTION OF INTERIOR
 DIAGONALS IN VERTICAL PLANE TO THE
 TOP CHORD MEMBERS. SEE SECTION F-F.



DETAIL D

SEE STANDARD SHEET SCST-02-17 FOR LOCATIONS OF DETAILS A, B AND
 C AND SECTIONS F-F AND G-G.

03-2018 LATEST REVISION DATE APPROVED BY BRIDGE ENGINEER		 STANDARD DESIGN STEEL CANTILEVER SIGN TRUSS JULY, 2017
		GUSSET PLATE CONNECTION DETAILS SCST-05-17