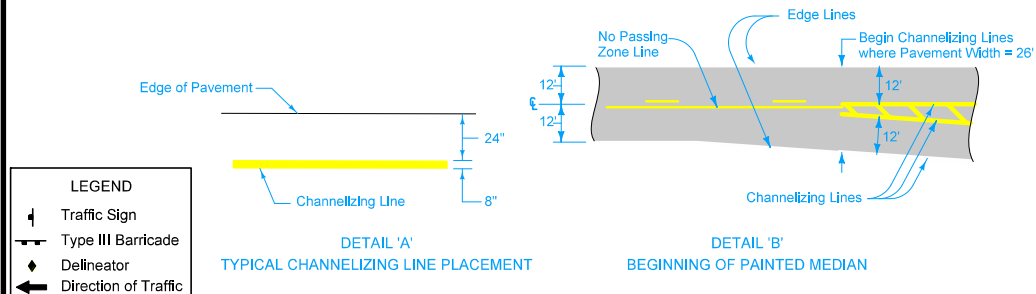
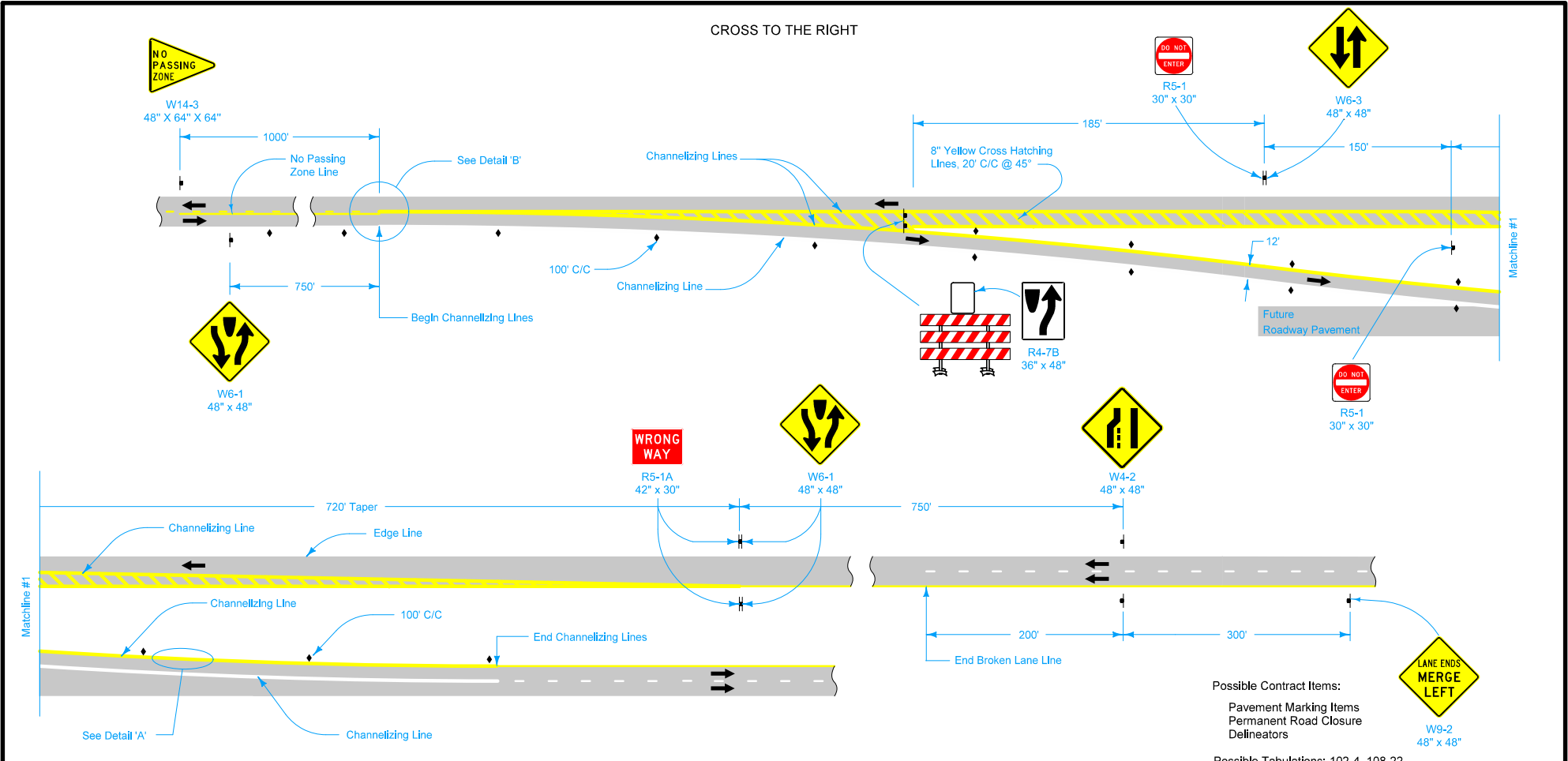


CROSS TO THE RIGHT



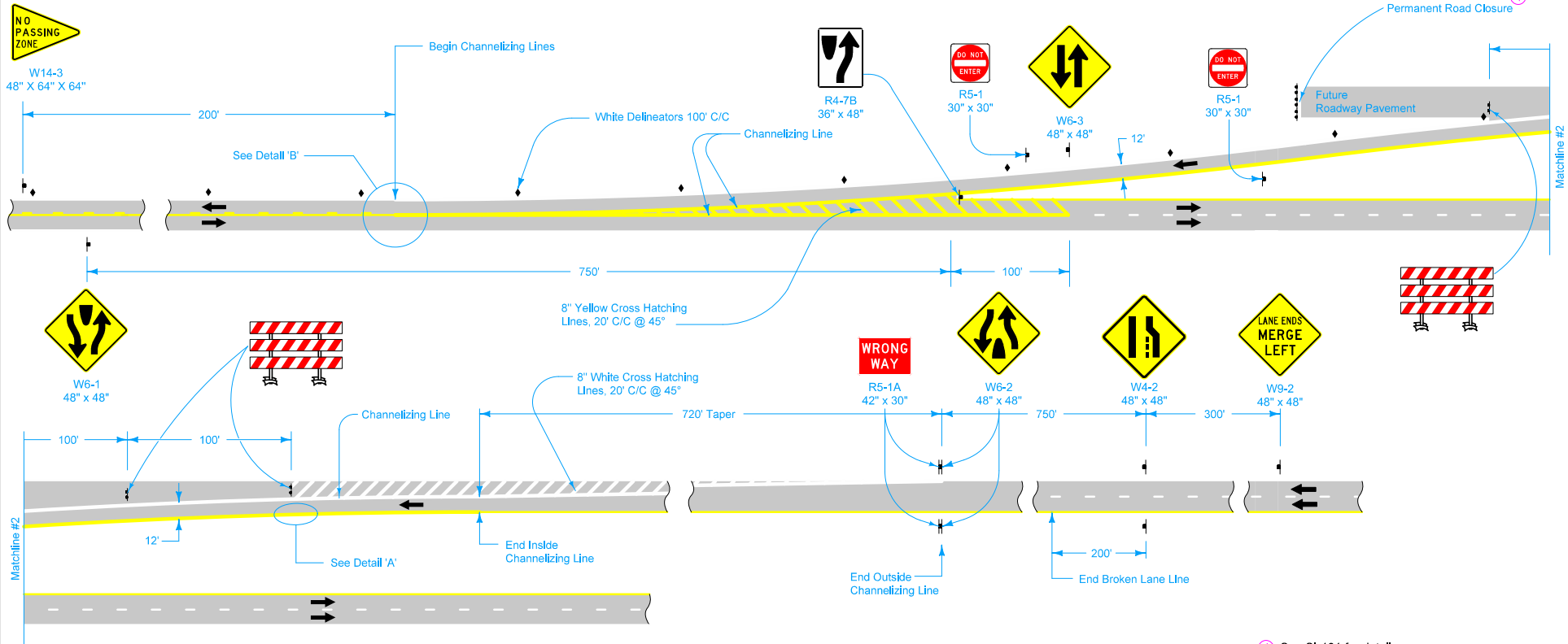
LEGEND

- Traffic Sign
- Type III Barricade
- Delineator
- Direction of Traffic

Warning signs shall be yellow with black legend and symbols.
 Type III barricades shall conform to Section 3F.01 of the MUTCD.

<p>STANDARD ROAD PLAN</p> <p>REVISIONS: Changed sign W6-1 to a W6-2 on lower half of Sheet 2.</p> <p style="text-align: right; font-size: small;">APPROVED BY DESIGN METHODS ENGINEER</p>	REVISION
	6 10-16-18
	TC-62
SHEET 1 of 2	
PERMANENT TWO-LANE TO FOUR-LANE DIVIDED	

CROSS TO THE LEFT



① See SI-181 for details.

LEGEND	
	Traffic Sign
	Type III Barricade
	Delineator
	Direction of Traffic

 STANDARD ROAD PLAN	REVISION
	6 10-16-18
	TC-62
SHEET 2 of 2	
<small>REVISIONS: Changed sign W6-1 to a W6-2 on lower half of Sheet 2.</small>	
<small>APPROVED BY DESIGN METHODS ENGINEER</small> 	
PERMANENT TWO-LANE TO FOUR-LANE DIVIDED TRANSITION	