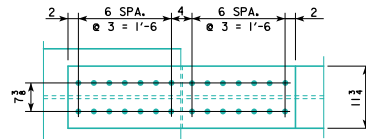
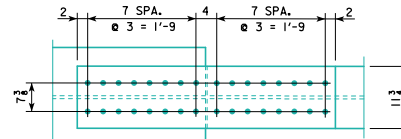


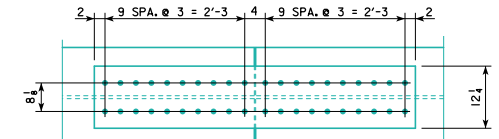
TOP AND BOTTOM FLANGE



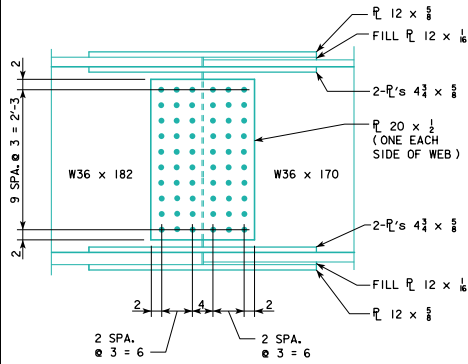
TOP AND BOTTOM FLANGE



TOP AND BOTTOM FLANGE



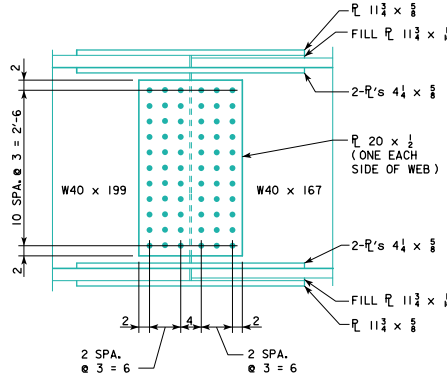
TOP AND BOTTOM FLANGE



BOLTED SPLICE DETAILS

240' BEAM SPLICE

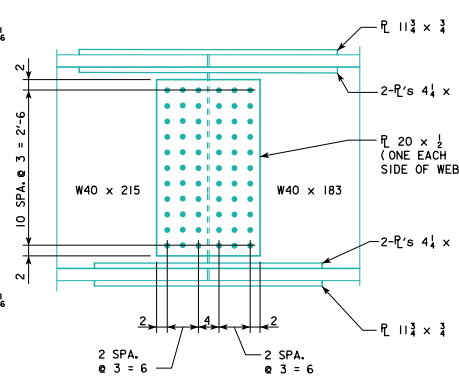
NOTE: ALL BOLTS 3/4"



BOLTED SPLICE DETAILS

260' BEAM SPLICE

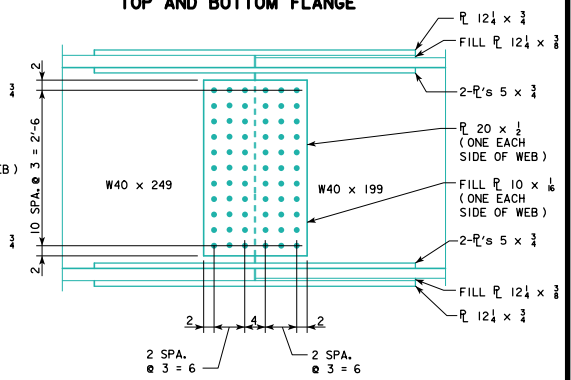
NOTE: ALL BOLTS 3/4"



BOLTED SPLICE DETAILS

280' BEAM SPLICE

NOTE: ALL BOLTS 3/4"



BOLTED SPLICE DETAILS

300' BEAM SPLICE

NOTE: ALL BOLTS 3/4"

LATEST REVISION DATE <i>Norman E. McQuinn</i> APPROVED BY BRIDGE ENGINEER	
	STANDARD DESIGN - 40' ROADWAY, 3 SPAN BRIDGES ROLLED STEEL BEAM BRIDGES JUNE, 2010
	BOLTED FIELD SPLICE DETAILS SHEET 2

RS40-085-10