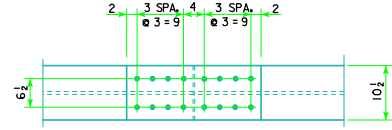
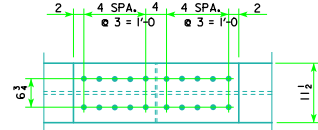


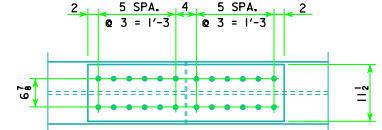
TOP AND BOTTOM FLANGE



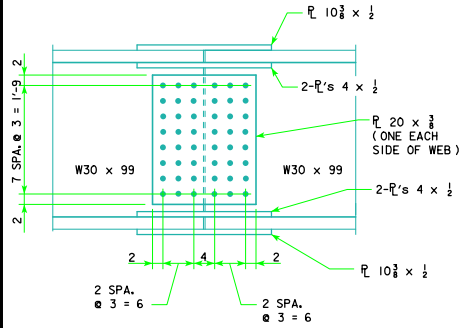
TOP AND BOTTOM FLANGE



TOP AND BOTTOM FLANGE



TOP AND BOTTOM FLANGE

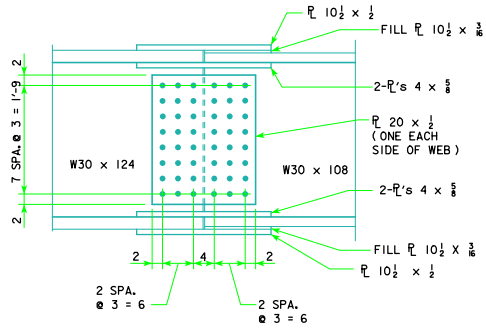


BOLTED SPLICE DETAILS

160' BEAM SPLICE

NOTE: ALL BOLTS 3/4"

STRUCTURAL STEEL
ONE SPLICE
329 (LBS.)

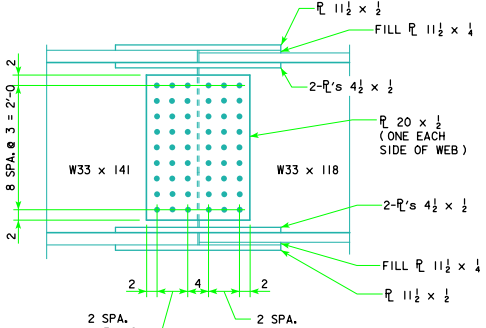


BOLTED SPLICE DETAILS

180' BEAM SPLICE

NOTE: ALL BOLTS 3/4"

STRUCTURAL STEEL
ONE SPLICE
396 (LBS.)

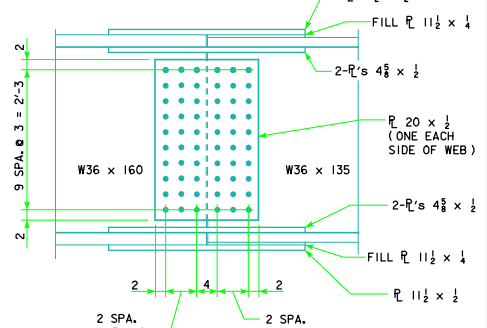


BOLTED SPLICE DETAILS

200' BEAM SPLICE

NOTE: ALL BOLTS 3/4"

STRUCTURAL STEEL
ONE SPLICE
476 (LBS.)



BOLTED SPLICE DETAILS

220' BEAM SPLICE

NOTE: ALL BOLTS 3/4"

STRUCTURAL STEEL
ONE SPLICE
553 (LBS.)

NOTE: STRUCTURAL STEEL WEIGHT INCLUDES WEIGHT OF SPLICE PLATES, FILL PLATES, BOLTS, NUTS AND WASHERS.

NOTE: STRUCTURAL STEEL WEIGHT IS INCLUDED ON THE SUMMARY QUANTITIES SHEET.

LATEST REVISION DATE	 APPROVED BY BRIDGE ENGINEER	 STANDARD DESIGN - 40' ROADWAY, 3 SPAN BRIDGES ROLLED STEEL BEAM BRIDGES OCTOBER, 2014	
		BOLTED FIELD SPLICE DETAILS SHEET 1	RS40-084-14