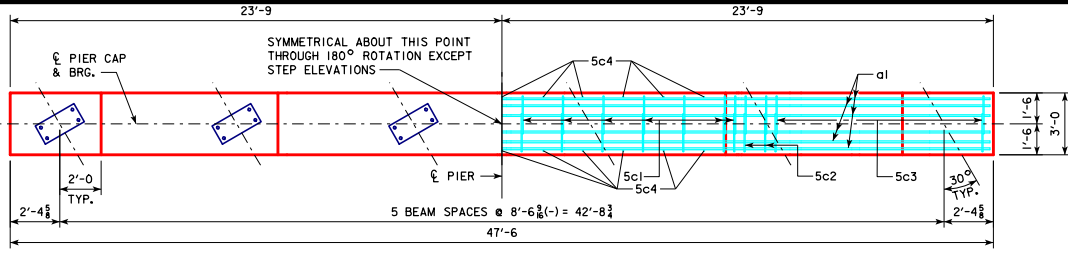
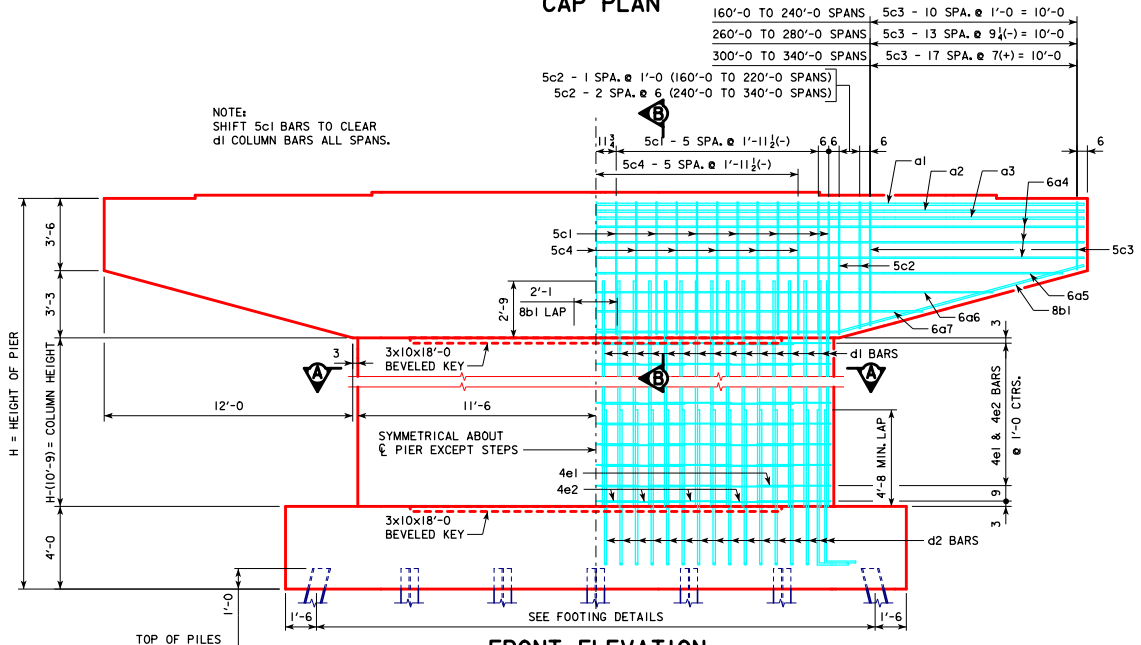


REVISED 02-2017 - CHANGED BEVELED KEYWAY ON PIER COLUMN CAP AND FOOTING TO 3"x10"x18"-0 (WAS 2"x8"x20"-0). KEYWAY LENGTH CHANGED TO BE 5'-0 LESS THAN WIDTH OF PIER COLUMN.

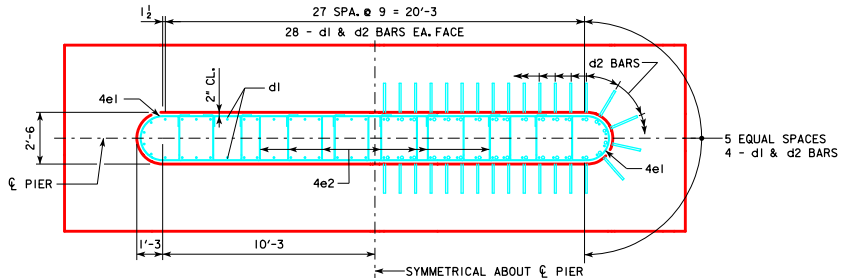


CAP PLAN

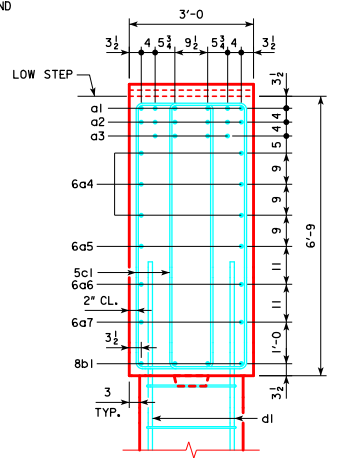
NOTE:
ANCHOR BOLTS REQUIRED FOR FIXED
PIER BEARINGS ONLY. FOR BOLT AND
BEARING SIZES, SEE RS40-093-14,
RS40-094-14 OR RS40-095-14.



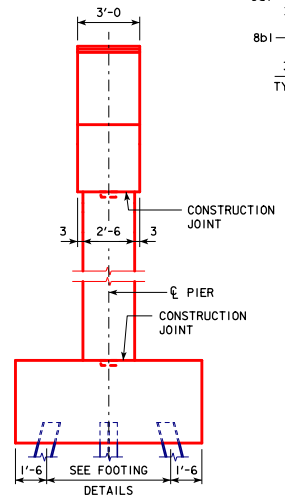
FRONT ELEVATION



SECTION A-A



SECTION B-B



END ELEVATION

02-2017 LATEST REVISION DATE <i>Thomas E. Mc Donnell</i> APPROVED BY BRIDGE ENGINEER	
	STANDARD DESIGN - 40' ROADWAY, 3 SPAN BRIDGES ROLLED STEEL BEAM BRIDGES OCTOBER, 2014
	TEE PIER CAP & COLUMN DETAILS 30° SKEW

RS40-146-14