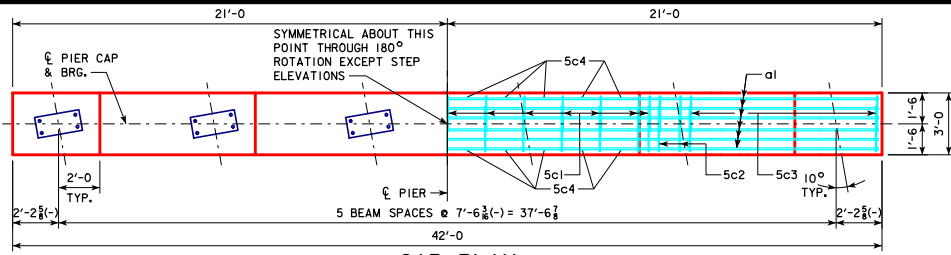
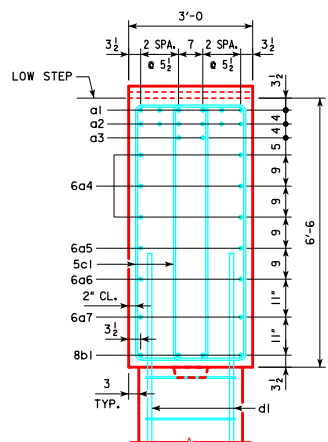


REVISED 10-2016 - CHANGED BEVELED KEYWAY ON PIER COLUMN CAP AND FOOTING TO 3"x10"x15"-0. (WAS 2"x8"x17"-0). KEYWAY LENGTH CHANGED TO BE 5'-0" LESS THAN WIDTH OF PIER COLUMN.

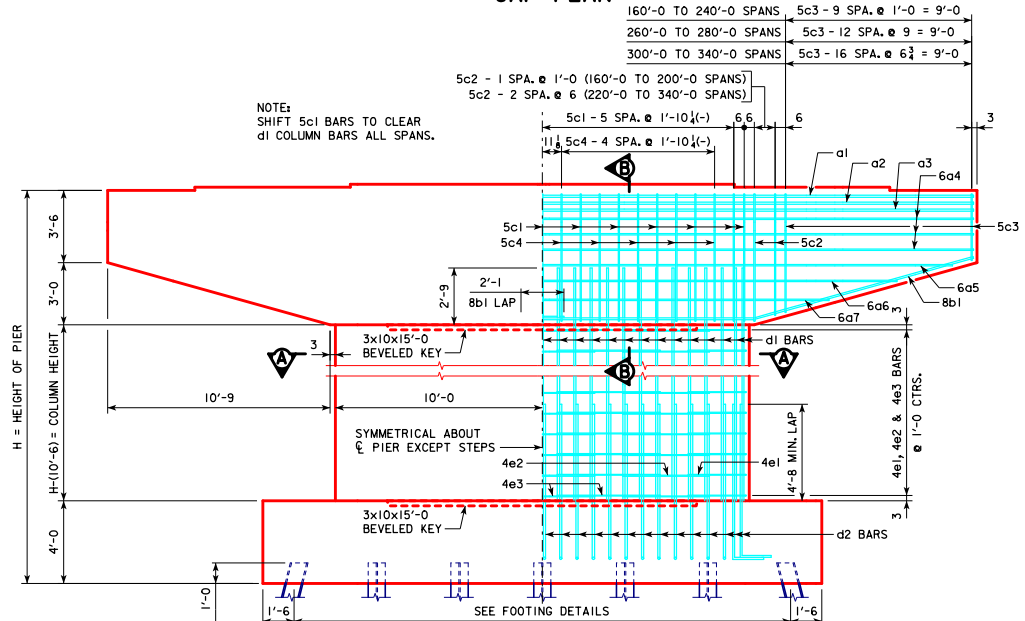


CAP PLAN

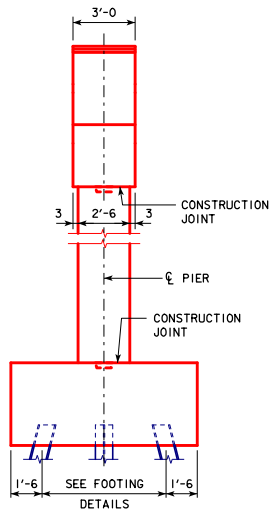
NOTE:
ANCHOR BOLTS REQUIRED FOR FIXED
PIER BEARINGS ONLY. FOR BOLT AND
BEARING SIZES, SEE RS40-093-10,
RS40-094-10 OR RS40-095-10.



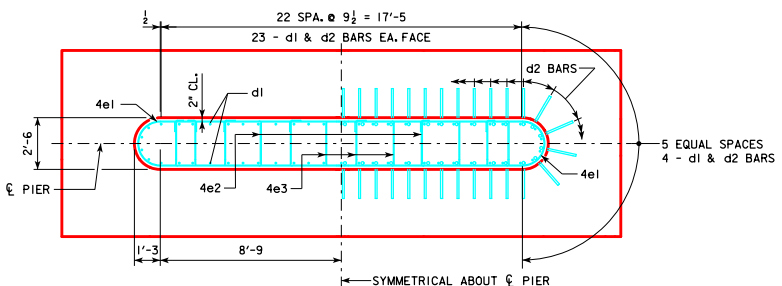
SECTION B-B



FRONT ELEVATION



END ELEVATION



SECTION A-A

10-2016 LATEST REVISION DATE <i>Thomas E. McQuinn</i> APPROVED BY BRIDGE ENGINEER		STANDARD DESIGN - 40' ROADWAY, 3 SPAN BRIDGES ROLLED STEEL BEAM BRIDGES JUNE, 2010 TEE PIER CAP & COLUMN DETAILS 10° SKEW	RS40-126-10	
	23 - d1 & d2 BARS EA. FACE 5 EQUAL SPACES 4 - d1 & d2 BARS			
	22 SPA. @ 9 1/2 = 17'-5 23 - d1 & d2 BARS EA. FACE			