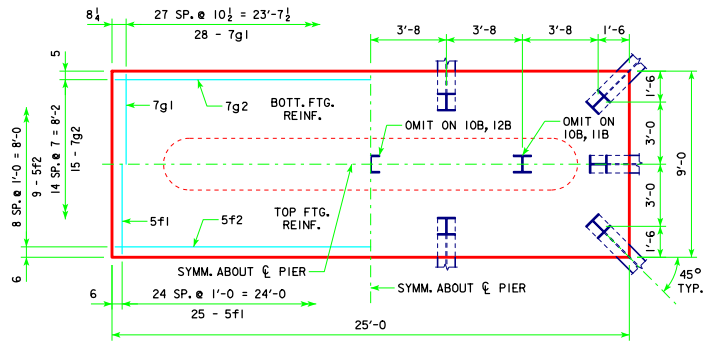
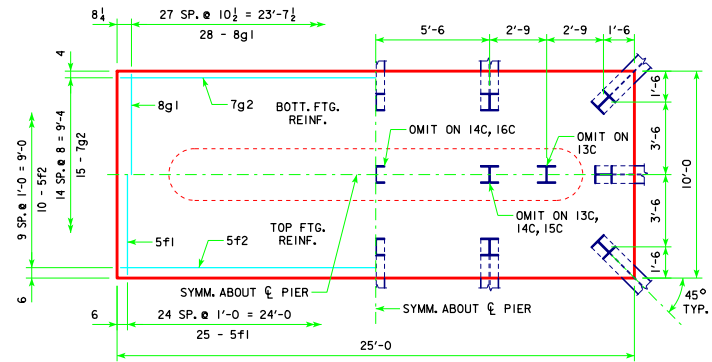


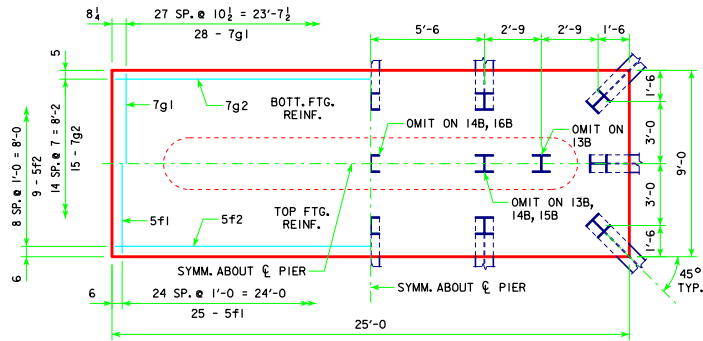
REVISED 05-13 - REVISION FOR LRFD PILE DESIGN.



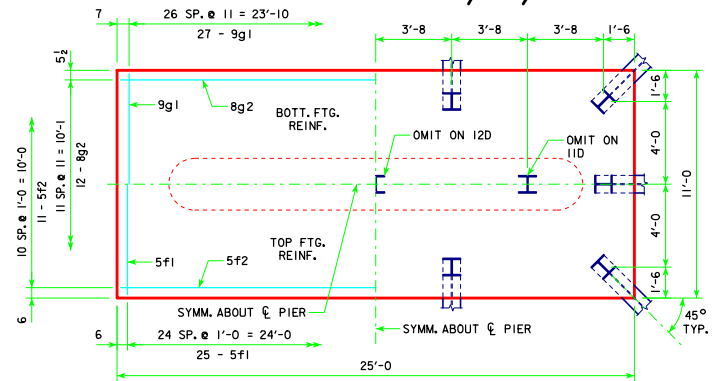
4'-0" x 9'-0" x 25'-0" FOR 10B, 11B & 12B



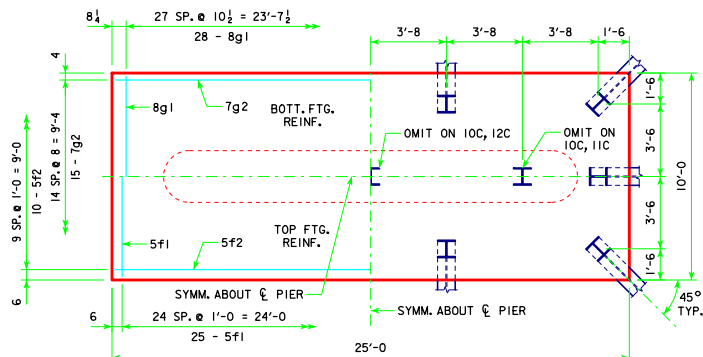
4'-0" x 10'-0" x 25'-0" FOR 13C, 14C, 15C & 16C



4'-0" x 9'-0" x 25'-0" FOR 13B, 14B, 15B & 16B




4'-0" x 11'-0" x 25'-0" FOR 11D & 12D



4'-0" x 10'-0" x 25'-0" FOR 10C, 11C & 12C

NOTE:
SEE SHEET RS40-121-10 FOR FOOTING NOTES.

05-13 LATEST REVISION DATE <i>Thomas E. McQuinn</i> APPROVED BY BRIDGE ENGINEER	 Iowa Department of Transportation Highway Division
	STANDARD DESIGN - 40' ROADWAY, 3 SPAN BRIDGES ROLLED STEEL BEAM BRIDGES JUNE, 2010
TEE PIER-HPI0x57 SRL-2 STEEL PILE FOOTINGS 0° SKEW - SHEET 2	
RS40-122-10	