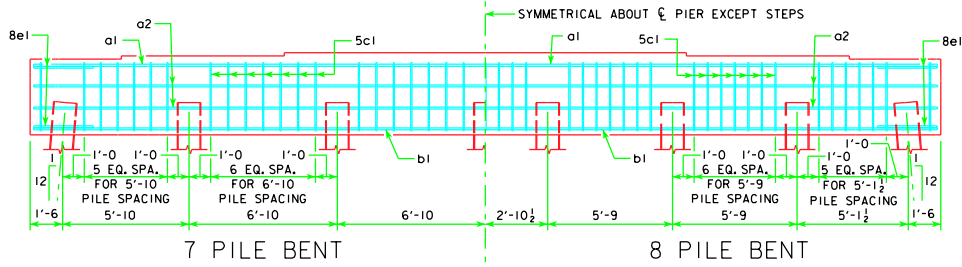
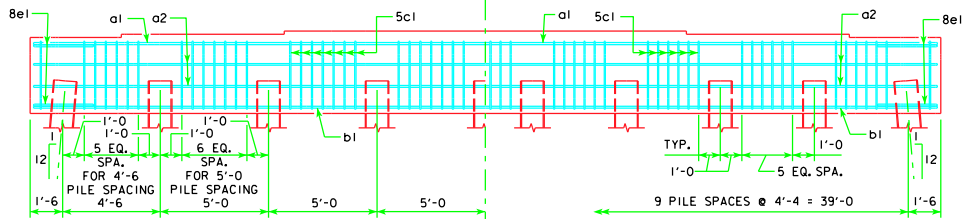


TYPICAL PLAN



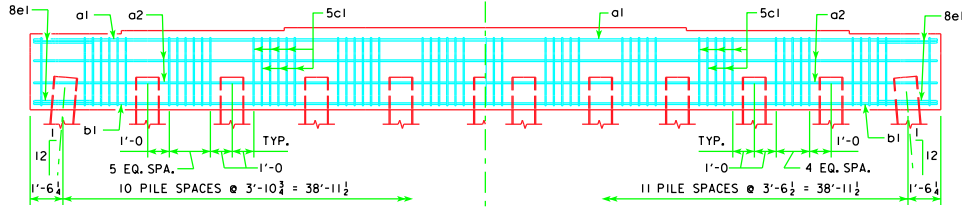
7 PILE BENT

8 PILE BENT



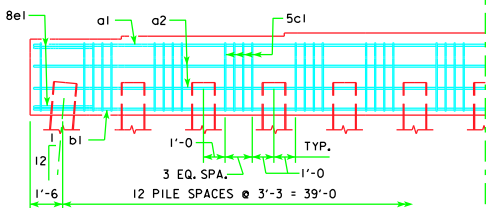
9 PILE BENT

10 PILE BENT



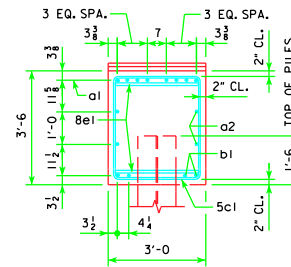
11 PILE BENT

12 PILE BENT

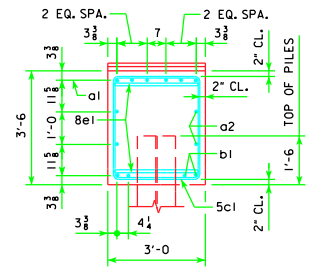


13 PILE BENT

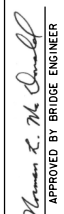

NOTE:
 THE HEIGHT OF THE STEPS ON THE BRIDGE SEAT IS EQUAL TO THE DIFFERENCE IN ELEVATIONS OF THE TOP OF SLAB AT ADJACENT BEAMS ALONG \bar{C} PIER. ANCHOR BOLTS REQUIRED FOR FIXED PIER BEARINGS ONLY. FOR BOLT AND BEARING SIZES, SEE RS40-093-10, RS40-094-10 OR RS40-095-10.



VIEW A-A
 FOR 7, 8, 9, 10 & 11 PILE BENTS



VIEW A-A
 FOR 12 & 13 PILE BENTS

LATEST REVISION DATE	 APPROVED BY BRIDGE ENGINEER	 Iowa Department of Transportation Highway Division	
		STANDARD DESIGN - 40' ROADWAY, 3 SPAN BRIDGES ROLLED STEEL BEAM BRIDGES JUNE, 2010	
		PILE BENT PIERS HP14 PILES 10° SKEW	RS40-102-10