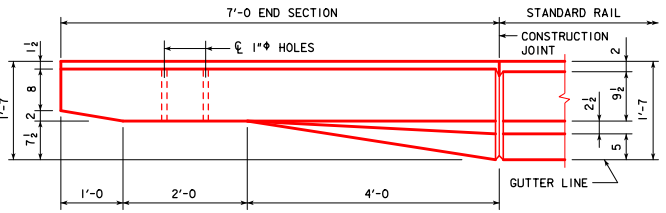
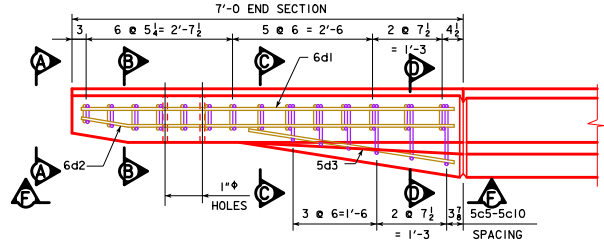


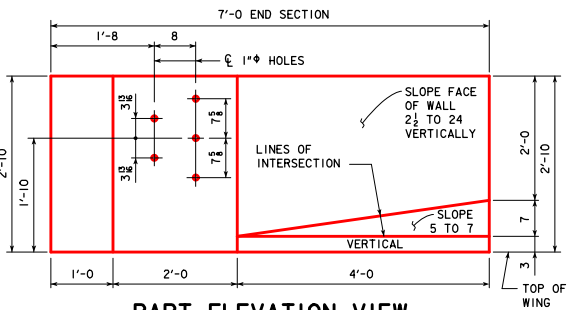
REVISED 03-2016 - REFERENCE TO "1" PVC PIPE" WAS CHANGED FROM "1" PVC PIPE" TO "1" PLASTIC CONDUIT".  
REVISED 09-2016 - REMOVED "NOTE: REINFORCING STEEL QUANTITIES ARE INCLUDED ON THE SUMMARY QUANTITIES SHEET."



**PART PLAN VIEW**

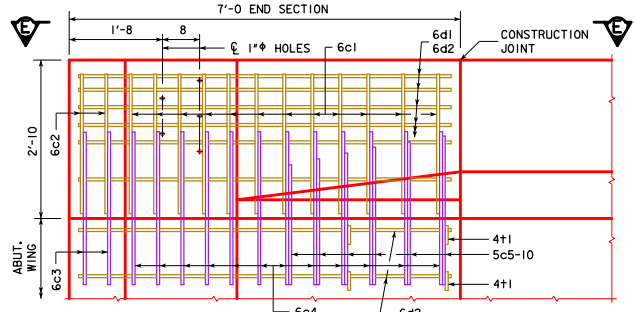


**PART VIEW E-E**

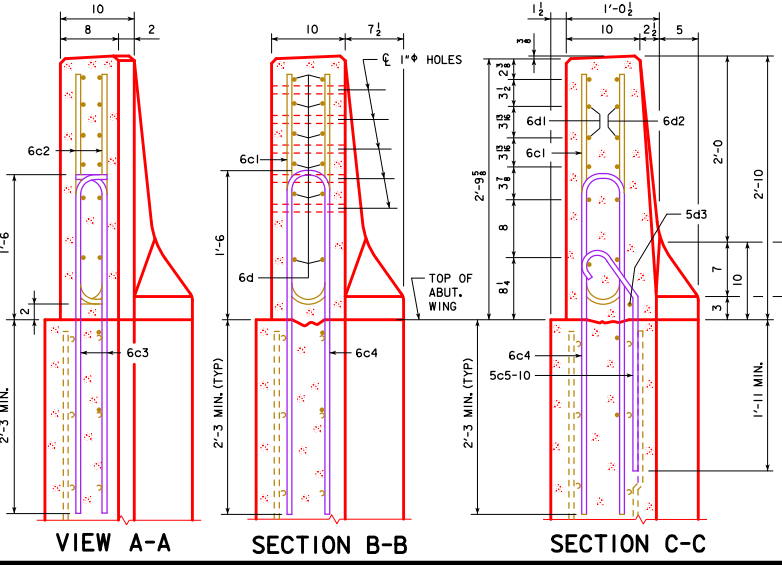


**PART ELEVATION VIEW**

PROVIDE 5 HOLES FORMED WITH 1" PVC PIPE. COST TO BE INCLUDED IN PRICE BID FOR CONCRETE BARRIER RAILING.



**PART VIEW F-F**



**VIEW A-A**

**SECTION B-B**

**SECTION C-C**

**SECTION D-D**

**NOTE:**  
4+1 PLACEMENT - 2 BARS EACH LEVEL OF 6d2 IN WING FOOTING.

**NOTE:**  
CONSTRUCTION JOINT BETWEEN TOP OF WING AND BARRIER RAIL IS ROUGHENED CONCRETE.

**NOTE:**  
THE 10" RADIUS AND 1/2" RADIUS ARE TYPICAL AND SHALL BE USED WHEN CONSTRUCTING THE CORNERS FOR VIEW A-A, SECTION B-B, SECTION C-C AND SECTION D-D.

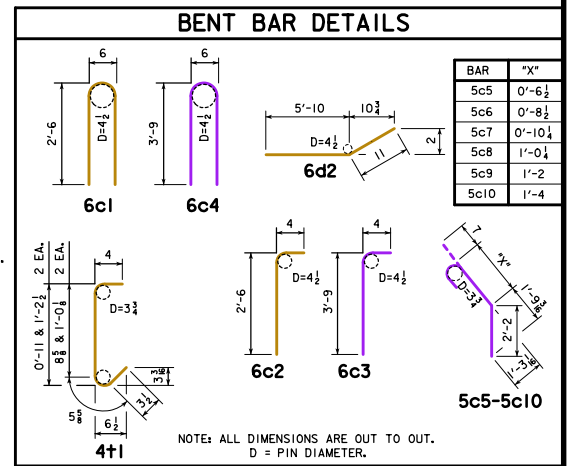
**NOTE:**  
THE 6c4, 6c3, 5c5-10, 2 - 6d2 AND 4+1 BARS ARE TO BE PLACED WITH THE ABUTMENT WING. THE DETAILS FOR PLACEMENT ARE SHOWN ON THE WING ABUTMENT SHEET.

**NOTE:**  
DASHED LINES BELOW THE TOP OF WING ARE THE ABUTMENT WING REINFORCING STEEL. SEE WING ABUTMENT SHEET FOR PLACEMENT.

EPOXY COATED REINF. STEEL - ONE END SECT.					
BAR	LOCATION	SHAPE	NO.	LENGTH	WEIGHT
6c1	RAIL, VERTICAL	□	12	5'-6	99
6c2	RAIL, VERTICAL	┘	4	2'-10	17
6d1	RAIL, HORIZONTAL	—	6	6'-8	60
6d2	RAIL, HORIZONTAL	—	8	6'-9	81
5d3	RAIL, HORIZONTAL	—	1	3'-9	4
4+1	RAIL, ABUTMENT WING TIE BARS	┘	4	VARIES	5
EPOXY REINF. TOTAL WEIGHT (LBS.)					266

STAINLESS STEEL REINF. STEEL - ONE END SECT.					
BAR	LOCATION	SHAPE	NO.	LENGTH	WEIGHT
6c3	RAIL, VERTICAL	┘	4	4'-1	25
6c4	RAIL, VERTICAL	┘	12	8'-0	144
5c5-10	RAIL, VERTICAL	┘	6	VARIES	23
STAINLESS STEEL TOTAL WEIGHT (LBS.)					192

CONCRETE PLACEMENT SUMMARY	
SECTION	TOTAL
BARRIER RAIL ONE END SECTION	0.65 CU. YD.



LATEST REVISION DATE 08-2016 Approved by Bridge Engineer APPROVED BY BRIDGE ENGINEER	
	STANDARD DESIGN - 44' ROADWAY, 3 SPAN BRIDGES <b>CONTINUOUS CONCRETE SLAB BRIDGES</b> JULY, 2014
	BARRIER RAIL END SECTION <span style="float: right;">J44-47-14</span>