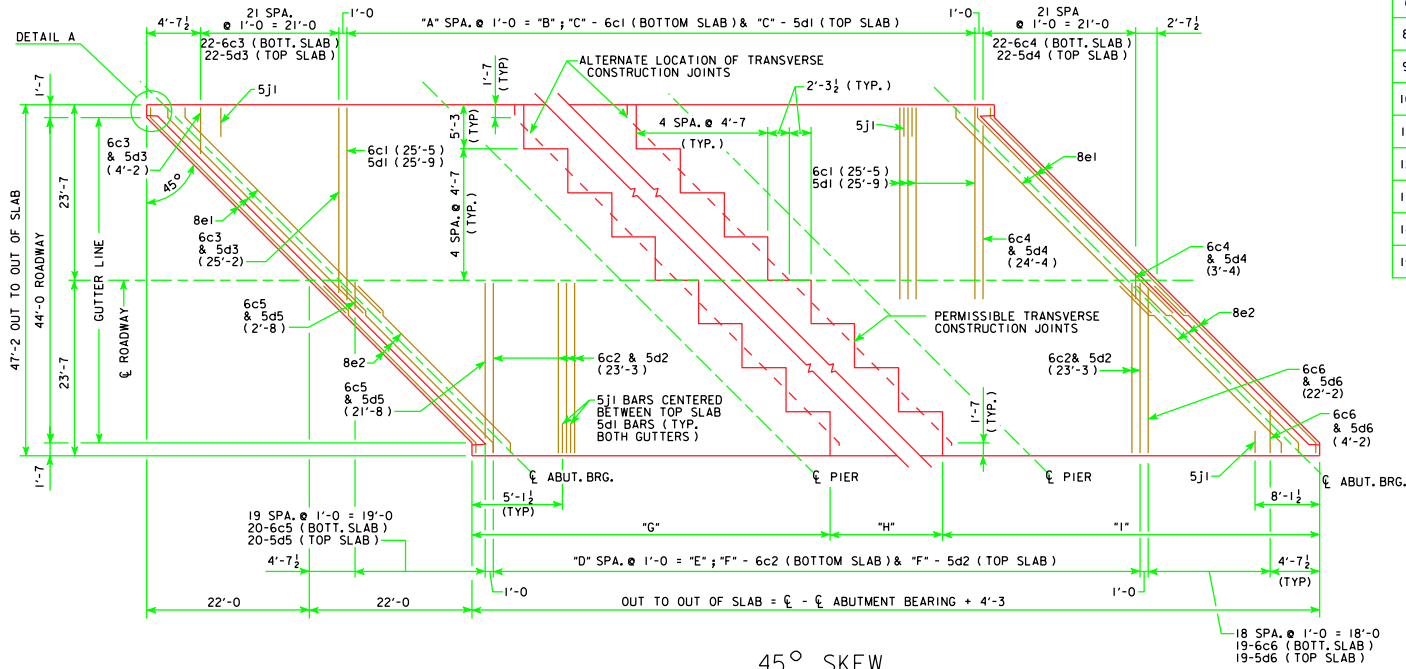
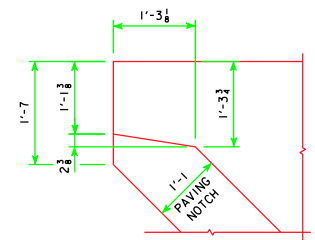


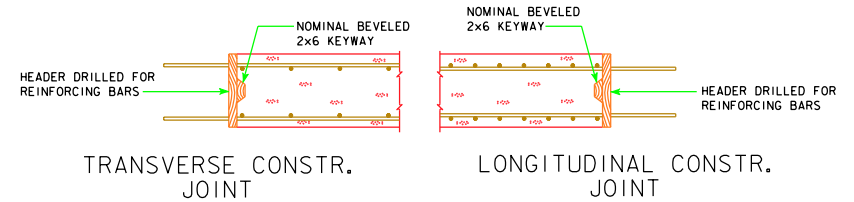
| 45° TRANSV. REINFORCING DIMENSION TABLE | | | | | | | | | |
|---|-----|--------|-----|-----|--------|-----|-------|-------|-------|
| BRIDGE | "A" | "B" | "C" | "D" | "E" | "F" | "G" | "H" | "I" |
| 70' BRIDGE | 45 | 45'-0 | 46 | 48 | 48'-0 | 49 | 27'-3 | 17'-0 | 30'-0 |
| 80' BRIDGE | 55 | 55'-0 | 56 | 58 | 58'-0 | 59 | 31'-3 | 19'-0 | 34'-0 |
| 90' BRIDGE | 65 | 65'-0 | 66 | 68 | 68'-0 | 69 | 35'-3 | 21'-0 | 38'-0 |
| 100' BRIDGE | 75 | 75'-0 | 76 | 78 | 78'-0 | 79 | 39'-3 | 23'-0 | 42'-0 |
| 110' BRIDGE | 85 | 85'-0 | 86 | 88 | 88'-0 | 89 | 43'-3 | 25'-0 | 46'-0 |
| 120' BRIDGE | 95 | 95'-0 | 96 | 98 | 98'-0 | 99 | 47'-3 | 27'-0 | 50'-0 |
| 130' BRIDGE | 105 | 105'-0 | 106 | 108 | 108'-0 | 109 | 51'-3 | 29'-0 | 54'-0 |
| 140' BRIDGE | 115 | 115'-0 | 116 | 118 | 118'-0 | 119 | 55'-3 | 31'-0 | 58'-0 |
| 150' BRIDGE | 125 | 125'-0 | 126 | 128 | 128'-0 | 129 | 59'-3 | 33'-0 | 62'-0 |



45° SKEW
TRANSVERSE REINFORCING STEEL LAYOUT
NOTE: 5d BARS ARE TO PASS UNDER 8e BARS IN CONFLICT AREAS.



DETAIL A



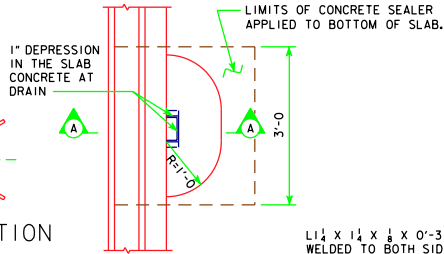
TRANSVERSE CONSTR. JOINT

LONGITUDINAL CONSTR. JOINT

| | |
|--------|-------------|
| 70'-0 | 5'-6 (TYP.) |
| 80'-0 | 5'-6 (TYP.) |
| 90'-0 | 6'-6 (TYP.) |
| 100'-0 | 6'-6 (TYP.) |
| 110'-0 | 7'-6 (TYP.) |
| 120'-0 | 7'-6 (TYP.) |
| 130'-0 | 8'-6 (TYP.) |
| 140'-0 | 8'-6 (TYP.) |
| 150'-0 | 8'-6 (TYP.) |

FLOOR DRAIN LOCATION

NOTE: 4" x 8" OUTSIDE DIMENSION ROLLED TUBE WITH 1/2" WALL THICKNESS MAY BE SUBSTITUTED FOR THE WELDED DRAIN SHOWN.

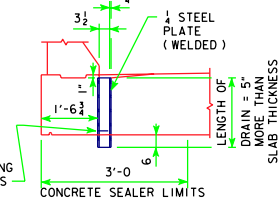


PART PLAN

FLOOR DRAIN DETAILS

(USE FOR BARRIER RAIL ONLY, NOT REQUIRED FOR OPEN RAIL)
NOTE: DRAINS ARE TO BE GALVANIZED. INCLUDE COST OF DRAINS IN PRICE BID FOR "STRUCTURAL CONCRETE". 4 DRAINS REQUIRED.

1 1/4" x 1 1/4" x 1/8" x 0'-3" WELDED TO BOTH SIDES OF DRAIN WITH 2-1/8" HOLES IN EACH OUTSTANDING LEG FOR NAILING TO FORMS



SECTION A-A

| WEIGHT OF ONE FLOOR DRAIN | | | |
|---------------------------|--------------|--------|--------------|
| SPAN | WEIGHT, LBS. | SPAN | WEIGHT, LBS. |
| 70'-0 | 32 | 120'-0 | 41 |
| 80'-0 | 33 | 130'-0 | 43 |
| 90'-0 | 35 | 140'-0 | 45 |
| 100'-0 | 37 | 150'-0 | 48 |
| 110'-0 | 39 | | |

07-09
LATEST REVISION DATE
M. J. O'Donnell
APPROVED BY BRIDGE ENGINEER

Iowa Department of Transportation
Highway Division

STANDARD DESIGN - 44' ROADWAY, 3 SPAN BRIDGES
CONTINUOUS CONCRETE SLAB BRIDGES
NOVEMBER, 2006

SUPERSTRUCTURE DETAILS
ALL BRIDGES

J44-24-06
45° SKEW