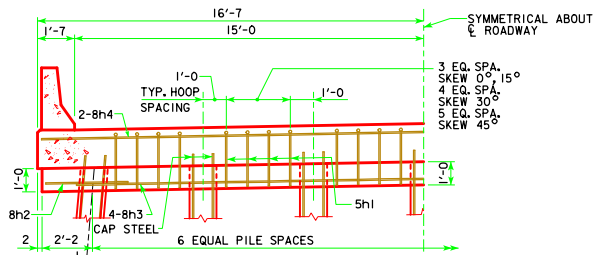
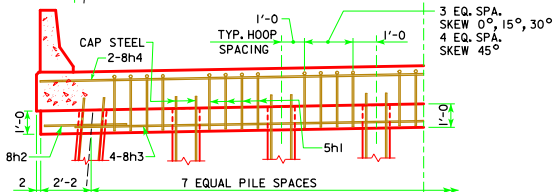


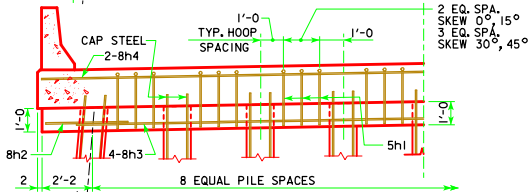
REVISED 07-09 - CHANGED THE DRAIN ANGLES DETAILS ON SECTION A-A.



**70'-0 & 80'-0 BRIDGES**



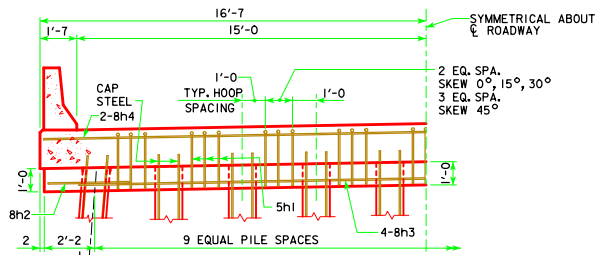
**90'-0 BRIDGE**



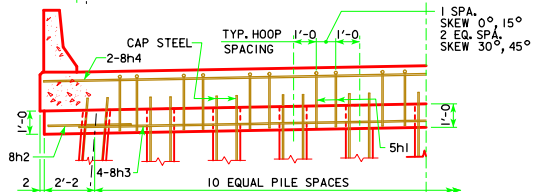
**100'-0 BRIDGE**

**HALF SECTION NEAR PIER**

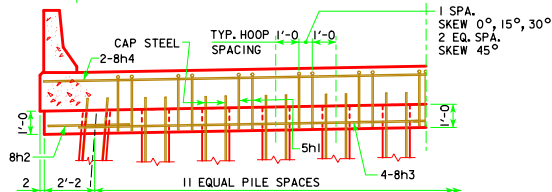
SHOWING STIRRUP SPACING AND NUMBER OF PILING  
NOTE: BOTTOM OF CAP ELEVATIONS WILL BE REQUIRED AT THE  $\bar{C}$  OF ROADWAY AND AT EACH EXTERIOR PILE.



**110'-0 BRIDGE**



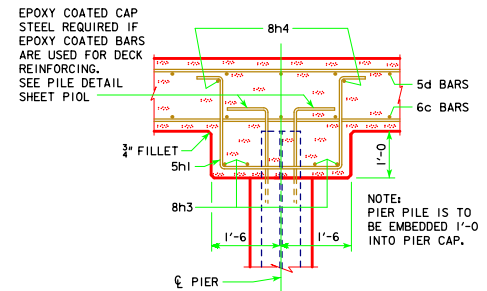
**120'-0 BRIDGE**



**130'-0, 140'-0 & 150'-0 BRIDGES**

**HALF SECTION NEAR PIER**

SHOWING STIRRUP SPACING AND NUMBER OF PILING  
NOTE: BOTTOM OF CAP ELEVATIONS WILL BE REQUIRED AT THE  $\bar{C}$  OF ROADWAY AND AT EACH EXTERIOR PILE.



**TYPICAL CAP SECTION**

07-09 LATEST REVISION DATE  <i>Thomas E. M. Donnell</i> APPROVED BY BRIDGE ENGINEER	
	STANDARD DESIGN - 30' ROADWAY, 3 SPAN BRIDGES <b>CONTINUOUS CONCRETE SLAB BRIDGES</b> NOVEMBER, 2006
	<b>MONOLITHIC PIER CAP DETAILS ALL BRIDGES</b>
<b>J30-24-06</b>	
SHEET 2 OF 2	