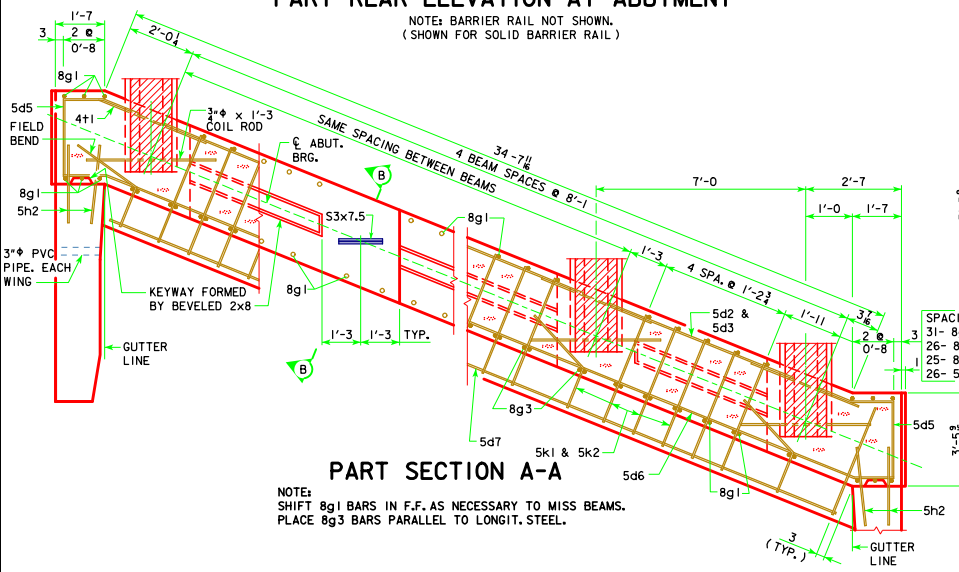


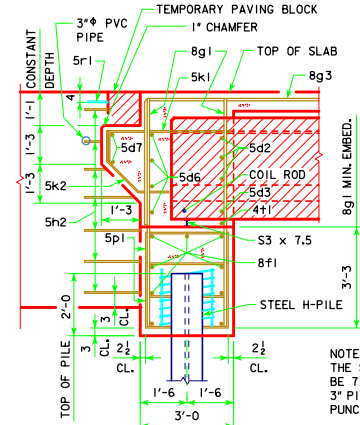
PART REAR ELEVATION AT ABUTMENT

NOTE: BARRIER RAIL NOT SHOWN.
(SHOWN FOR SOLID BARRIER RAIL)



PART SECTION A-A

NOTE:
SHIFT 8g1 BARS IN F.F. AS NECESSARY TO MISS BEAMS.
PLACE 8g3 BARS PARALLEL TO LONGIT. STEEL.



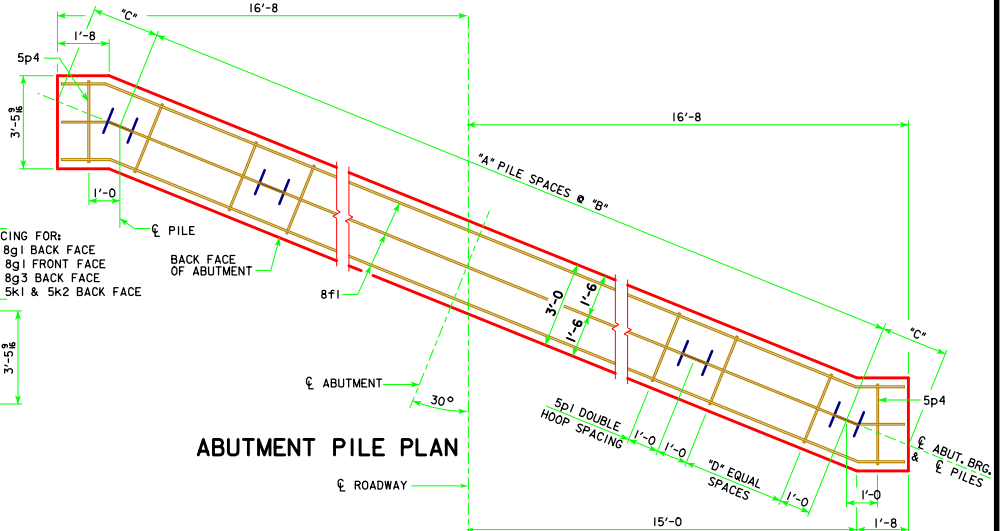
PART SECTION B-B

NOTE:
THE SPIRAL AT THE TOP OF EACH PILE TO BE 7 TURNS OF NO. 2 BAR, 21" DIAMETER, 3" PITCH WITH 2 - L 1/2 x 1/4 x 1/8 SPACERS PUNCHED TO HOLD SPIRAL.

ABUTMENT PILE SPACING

DIMENSION OR NO.	CL. TO CL. ABUTMENT BEARING	CL. TO CL. ABUTMENT BEARING	CL. TO CL. ABUTMENT BEARING
"A" PILE SPACES	46'-8"	55'-0"	67'-6"
"B" (FT. - IN.)	5	5	5
"C" (FT. - IN.)	6'-11"	6'-11"	6'-11"
"D" EQUAL SPACES	5	5	5
NO. OF PILES PER ABUT.	6	6	6
STRENGTH I DESIGN LOAD (KIPS)	111	119	137

NOTE: P_u, STRENGTH I DESIGN LOAD (KIPS) IS NOT THE VALUE USED IN THE FIELD FOR DRIVING PILES.



ABUTMENT PILE PLAN

ABUTMENT NOTES:

MINIMUM CLEAR DISTANCE FROM FACE OF CONCRETE TO NEAR REINFORCING BAR IS TO BE 2" UNLESS OTHERWISE NOTED OR SHOWN.

ABUTMENT PILES SHALL BE DRIVEN TO VALUES SHOWN IN DESIGN PLANS.

PLACE 5h2 BAR AT 1:6 SLOPE TO MATCH TRAFFIC SIDE OF ABUTMENT WING FACE. (BOTH SIDES TYPICAL)

BARRIER RAIL NOT SHOWN IN DETAILS.

IF ROCK IS CLOSER THAN 15' BELOW ABUTMENT FOOTING, SPECIAL ANALYSIS MAY BE REQUIRED.

LATEST REVISION DATE 05-13	 Iowa Department of Transportation Highway Division
	STANDARD DESIGN - 30' ROADWAY, SINGLE SPAN BRIDGE PRETENSIONED PRESTRESSED CONCRETE BEAM BRIDGES APRIL, 2012
	ABUTMENT DETAILS H30SI-15-12 30° SKEW A & B BEAMS

REVISED 05-13 - REVISION FOR LRED PILE DESIGN.