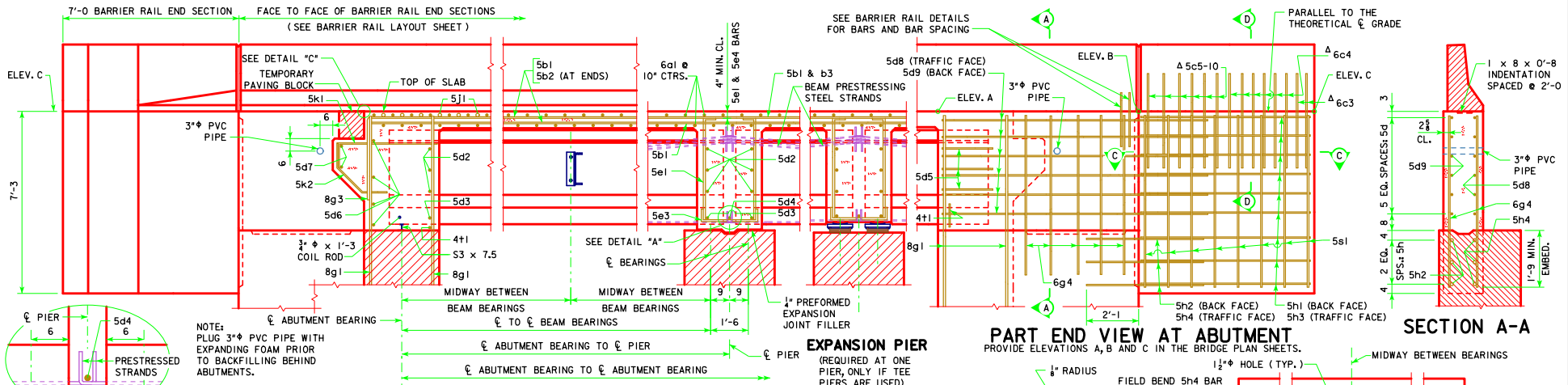


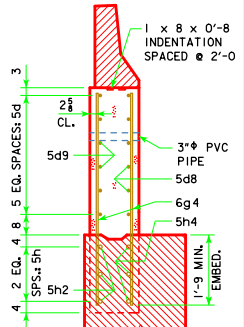
NOTE: BRIDGE IS SYMMETRICAL ABOUT ϕ



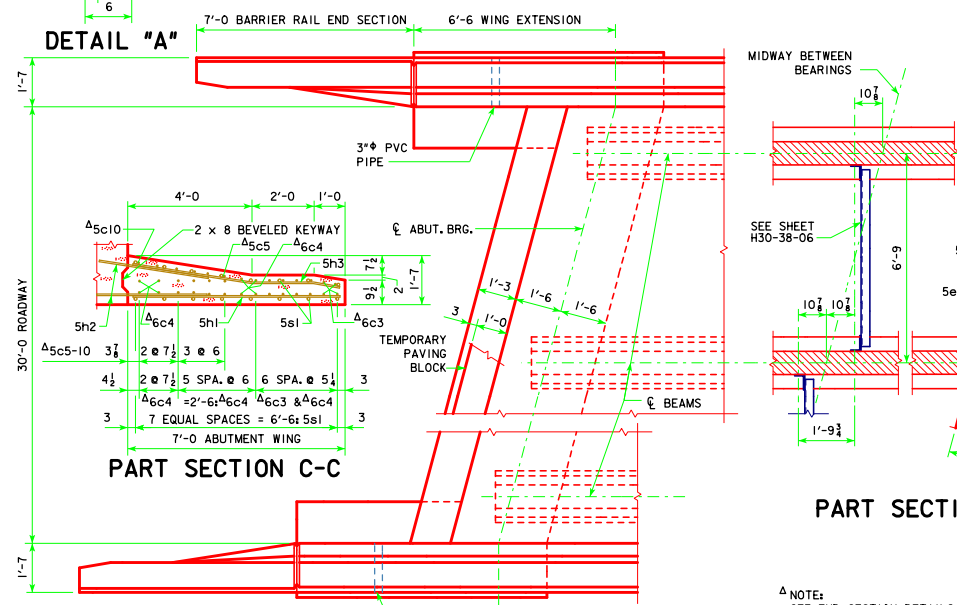
PART END VIEW AT ABUTMENT

PROVIDE ELEVATIONS A, B AND C IN THE BRIDGE PLAN SHEETS.

SECTION A-A



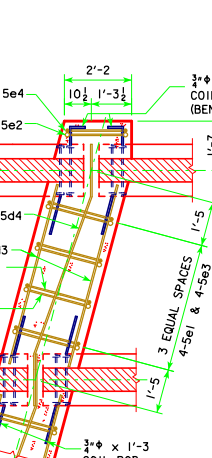
ABUTMENT PART LONGITUDINAL SECTION NEAR GUTTER
(FOR DETAILS OF INTERMEDIATE DIAPHRAGM SEE SHEET H30-38-06)



PART PLAN

NOTE: SEE END SECTION DETAILS IN THESE PLANS FOR DETAILS OF BARRIER RAIL END SECTION. REINFORCING BARS 6c3, 6c4, 5c5-10, 6d2 & 4t1 ARE INCLUDED IN THE SUPERSTRUCTURE QUANTITIES.

EXPANSION PIER
(REQUIRED AT ONE PIER, ONLY IF TEE PIERS ARE USED)



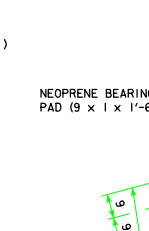
PART SECTION AT PIER



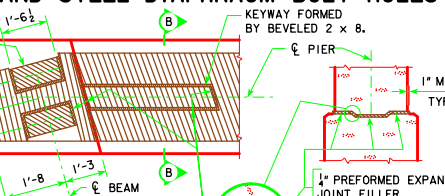
SECTION D-D

NOTE: SEE END SECTION DETAILS IN THESE PLANS FOR DETAILS OF BARRIER RAIL END SECTION. REINFORCING BARS 6c3, 6c4, 5c5-10, 6d2 & 4t1 ARE INCLUDED IN THE SUPERSTRUCTURE QUANTITIES.

DETAIL "C"



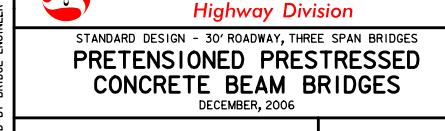
LOCATION OF BEAM COIL TIES AND STEEL DIAPHRAGM BOLT HOLES



SECTION B-B

NOTE: SEE SHEET H30-44-06 FOR EXPANSION PIER BEARING DETAILS

PART PLAN TOP OF FIXED PIER DETAILS



LONGITUDINAL SECTION
15° SKEW C BEAMS

H30-14-06

Iowa Department of Transportation
Highway Division
STANDARD DESIGN - 30' ROADWAY, THREE SPAN BRIDGES
PRETENSIONED PRESTRESSED CONCRETE BEAM BRIDGES
DECEMBER, 2006

LATEST REVISION DATE
01-12
APPROVED BY BRIDGE ENGINEER
Norman E. McQuinn

REVISED 01-12 - ADDED FIELD BEND 5/4 BAR TO AVOID PILE IN ABUTMENT WING NOTE.