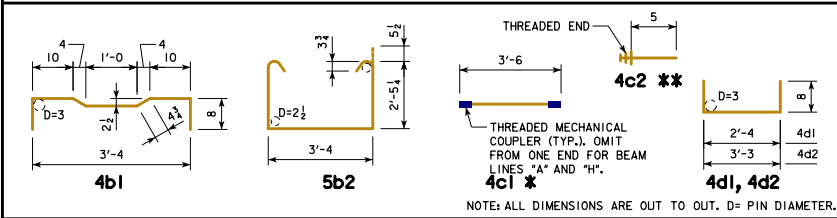


EPOXY COATED REINFORCING BAR LIST
33" x 48" x 50'-0 RCBB, 0° SKEW

BEAM LINE		BEAM LINE "A"			BEAM LINES "B", "D" AND "F"			BEAM LINES "C", "E" AND "G"			BEAM LINE "H"		
BAR	SHAPE	NO.	LENGTH	WEIGHT	NO.	LENGTH	WEIGHT	NO.	LENGTH	WEIGHT	NO.	LENGTH	WEIGHT
4g1		6	50'-10	204	6	50'-10	204	6	50'-10	204	6	50'-10	204
4a2		1	49'-8	33	1	49'-8	33	1	49'-8	33	1	49'-8	33
10a3		8	50'-10	1750	8	50'-10	1750	8	50'-10	1750	8	50'-10	1750
10a4		1	49'-8	214	1	49'-8	214	1	49'-8	214	1	49'-8	214
4b1		75	4'-9 1/2	240	76	4'-9 1/2	243	75	4'-9 1/2	240	76	4'-9 1/2	243
5b2		59	9'-1 1/2	562	59	9'-1 1/2	562	59	9'-1 1/2	562	59	9'-1 1/2	562
4c1 *		76	3'-6	178	77	3'-6	180	76	3'-6	178	77	3'-6	180
4c2 **		76	0'-5	21	154	0'-5	43	152	0'-5	42	77	0'-5	21
4c3		2	3'-2	4	-	-	-	2	3'-2	4	-	-	-
4d1		8	3'-8	20	8	3'-8	20	8	3'-8	20	8	3'-8	20
4d2		6	4'-7	18	6	4'-7	18	6	4'-7	18	6	4'-7	18
TOTAL (LBS.)		3244			3267			3265			3245		

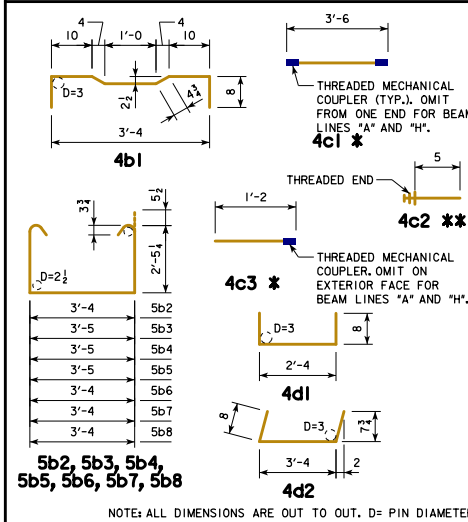
BENT BAR DETAILS



EPOXY COATED REINFORCING BAR LIST
33" x 48" x 50'-0 RCBB, 15° SKEW

BEAM LINE		BEAM LINES "A" AND "H"			BEAM LINES "B" THRU "G"		
BAR	SHAPE	NO.	LENGTH	WEIGHT	NO.	LENGTH	WEIGHT
4a1		6	50'-10	204	6	50'-10	204
4a2		1	49'-8	33	1	49'-8	33
10a3		8	50'-10	1750	8	50'-10	1750
10a4		1	49'-8	214	1	49'-8	214
4b1		74	4'-9 1/2	237	74	4'-9 1/2	237
5b2		47	9'-1 1/2	447	47	9'-1 1/2	447
5b3		2	9'-2 1/2	19	2	9'-2 1/2	19
5b4		2	9'-2 1/2	19	2	9'-2 1/2	19
5b5		2	9'-2 1/2	19	2	9'-2 1/2	19
5b6		2	9'-1 1/2	19	2	9'-1 1/2	19
5b7		2	9'-1 1/2	19	2	9'-1 1/2	19
5b8		4	9'-1 1/2	38	4	9'-1 1/2	38
4c1 *		75	3'-6	175	75	3'-6	175
4c2 **		76	0'-5	21	152	0'-5	42
4c3 *		2	1'-2	2	2	1'-2	2
4c4		4	3'-4	9	4	3'-4	9
4d1		8	3'-8	20	8	3'-8	20
4d2		6	4'-8	19	6	4'-8	19
TOTAL (LBS.)		3264			3285		

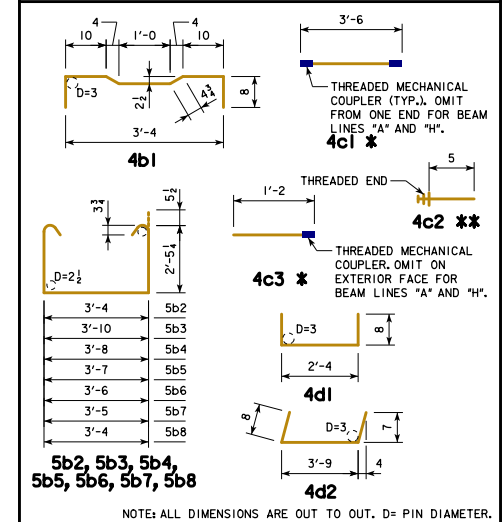
BENT BAR DETAILS



EPOXY COATED REINFORCING BAR LIST
33" x 48" x 50'-0 RCBB, 30° SKEW

BEAM LINE		BEAM LINES "A" AND "H"			BEAM LINES "B" THRU "G"		
BAR	SHAPE	NO.	LENGTH	WEIGHT	NO.	LENGTH	WEIGHT
4a1		6	50'-10	204	6	50'-10	204
4a2		1	49'-8	33	1	49'-8	33
10a3		8	50'-10	1750	8	50'-10	1750
10a4		1	49'-8	214	1	49'-8	214
4b1		71	4'-9 1/2	227	71	4'-9 1/2	227
5b2		47	9'-1 1/2	447	47	9'-1 1/2	447
5b3		2	9'-7 1/2	20	2	9'-7 1/2	20
5b4		2	9'-5 1/2	20	2	9'-5 1/2	20
5b5		2	9'-4 1/2	20	2	9'-4 1/2	20
5b6		2	9'-3 1/2	19	2	9'-3 1/2	19
5b7		2	9'-2 1/2	19	2	9'-2 1/2	19
5b8		4	9'-1 1/2	38	4	9'-1 1/2	38
4c1 *		72	3'-6	168	72	3'-6	168
4c2 **		75	0'-5	21	150	0'-5	42
4c3 *		6	1'-2	5	6	1'-2	5
4c4		4	3'-8	10	4	3'-8	10
4d1		8	3'-8	20	8	3'-8	20
4d2		6	5'-1	20	6	5'-1	20
TOTAL (LBS.)		3255			3276		

BENT BAR DETAILS



NOTES:
 * INCLUDES MECHANICAL COUPLER(S). SEE BENT BAR DETAILS.
 ** SEE BENT BAR DETAILS. THE LENGTHS SHOWN DO NOT INCLUDE AN ALLOWANCE FOR THE THREADED END. BAR LENGTHS MAY NEED TO INCREASE DEPENDING ON THE MECHANICAL COUPLER ASSEMBLY USED. THE COST OF THE THREADED PORTION OF THESE BARS IS TO BE INCLUDED IN THE PRICE BID FOR THE BEAMS. THE WEIGHT OF THE THREADED END IS NOT INCLUDED IN THE QUANTITY SHOWN.

LATEST REVISION DATE	Approved by Bridge Engineer 	 STANDARD DESIGN - 30'-0 ROADWAY, SINGLE SPAN CONCRETE BOX BEAM BRIDGES
		DECEMBER, 2016
		33" x 48" x 50'-0 RCBB DETAILS REINFORCING BAR LIST

B30-62-16