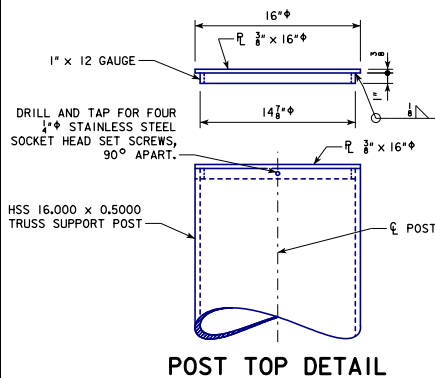
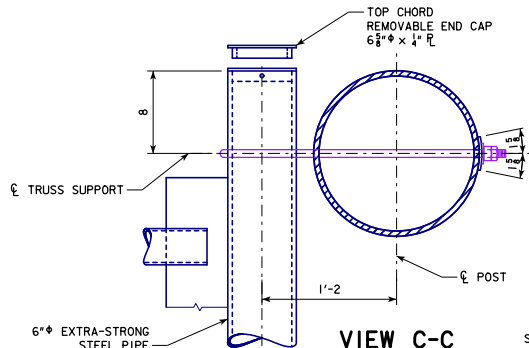


REVISION: 07-17 - MODIFIED NOTES, CORRECTED DEPICTIONS OF VIEWS D-D AND E-E TO PROPERLY COINCIDE WITH DETAILS F AND G. DECREASED RADIUS OF SADDLE CUTOFF FOR TRUSS CHORD TO 32" (WAS 31"). CHANGED SADDLE PLAN VIEW DIMENSION 6 1/2" (WAS 6 1/4").
STEEL OVERHEAD SIGN TRUSS - SOST-10-11 - THIS SHEET ISSUED 09-11.

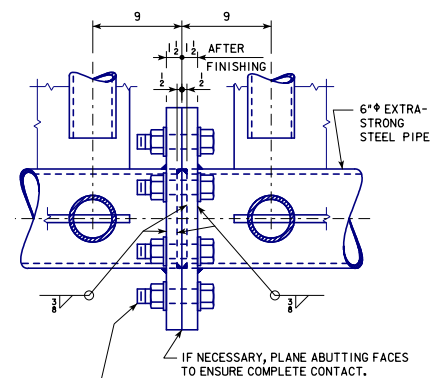
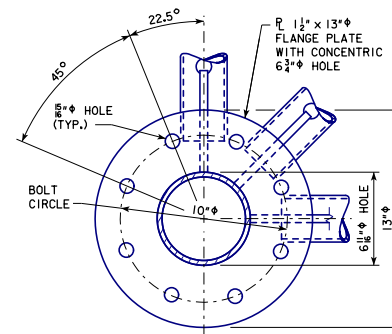


POST TOP DETAIL

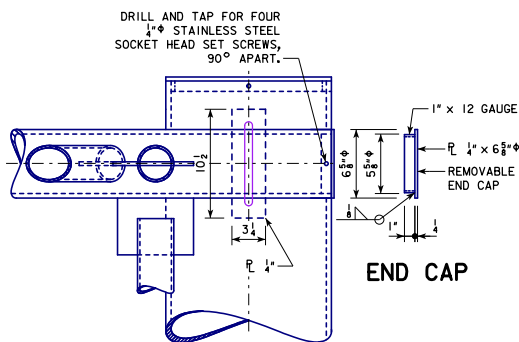


VIEW C-C

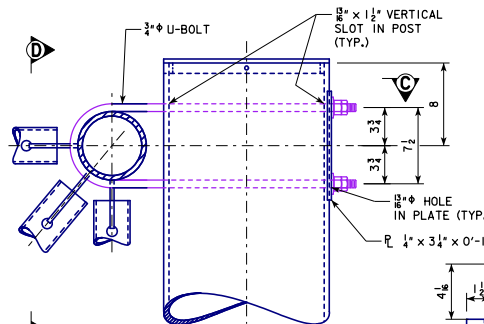
SOME HIDDEN LINES NOT SHOWN FOR CLARITY



SECURE PROPER ALIGNMENT AFTER FINISHING, THEN WELD FLANGE PLATES TO CHORD MEMBERS.

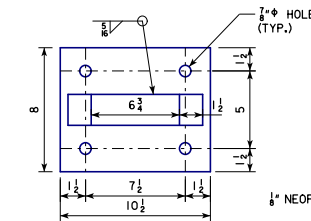


END CAP

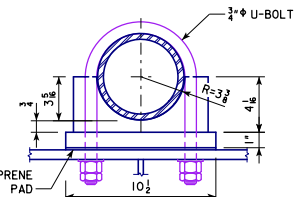


DETAIL F
TOP CHORD

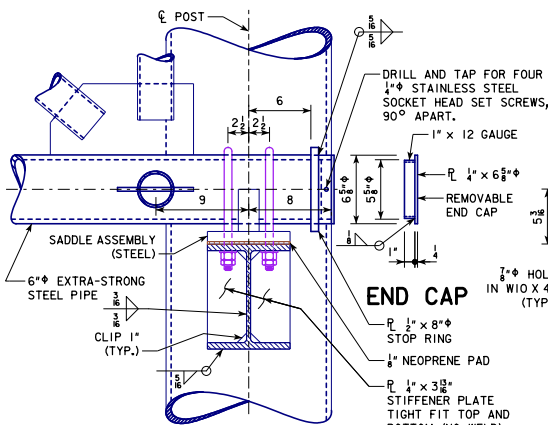
SADDLE END VIEW



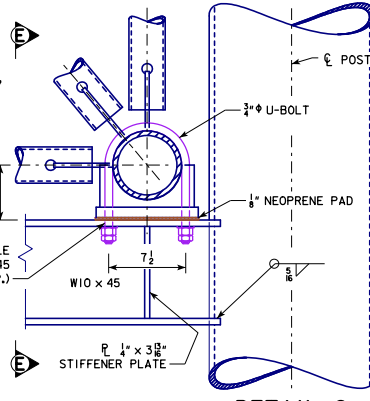
SADDLE PLAN VIEW



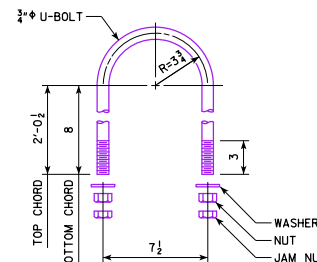
SADDLE SIDE VIEW



VIEW E-E



DETAIL G
BOTTOM CHORD



U-BOLT DETAIL

SEE STANDARD SHEET SOST-07-11 FOR LOCATIONS OF DETAILS F AND G.

<p>LATEST REVISION DATE</p> <p>07-17</p> <p>APPROVED BY BRIDGE ENGINEER</p> <p><i>Norman E. McQuinn</i></p>	<p>IOWA DOT Highway Division</p> <p>STANDARD DESIGN</p> <p>STEEL OVERHEAD SIGN TRUSS</p> <p>SEPTEMBER, 2011</p> <p>TRUSS SUPPORT AND CHORD SPLICE DETAILS</p> <p>105'-130' SPANS</p>
	<p>SOST-10-11</p>