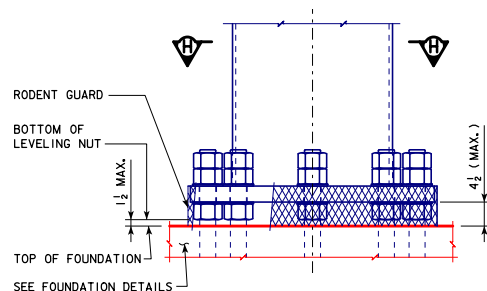


SECTION H-H



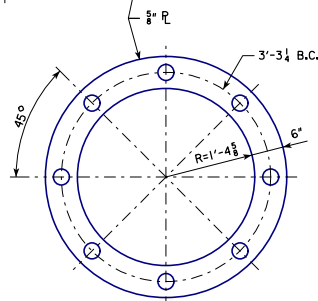
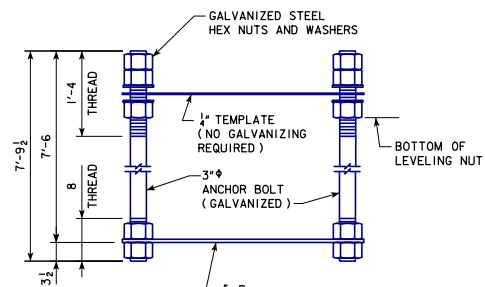
POST BASE DETAIL

SHOWING THE RODENT GUARD

THE RODENT GUARD SHALL BE PLACED AROUND THE BASE PLATE.

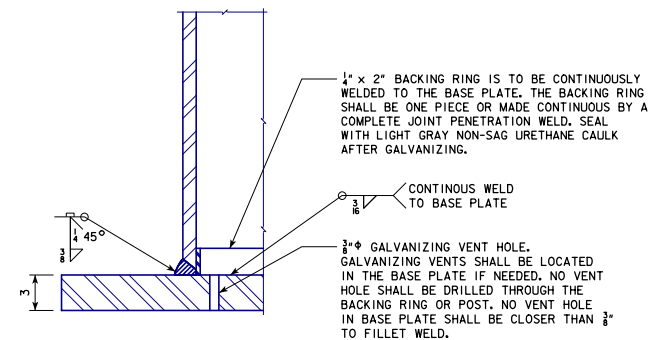
THE RODENT GUARD IS STAINLESS STEEL STANDARD GRADE WIRE CLOTH, 1\"/>

SECURE WIRE CLOTH TO BASE PLATE AFTER ERECTION WITH 3\"/>



ANCHOR BOLT ASSEMBLY

ALL ANCHOR BOLT MATERIALS AND GALVANIZING SHALL BE IN ACCORDANCE WITH ARTICLE 4187.01, C, 3 OF THE STANDARD SPECIFICATIONS.




SECTION J-J

SEE STANDARD SHEET SCST-02-17 FOR LOCATION OF POST BASE DETAIL.

SEE STANDARD SHEET SCST-08-17 FOR SPREAD FOOTING FOUNDATION DETAILS.

SEE STANDARD SHEET SCST-09-17 FOR DRILLED SHAFT FOUNDATION DETAILS.

LATEST REVISION DATE	APPROVED BY BRIDGE ENGINEER		
		STANDARD DESIGN	
		STEEL CANTILEVER SIGN TRUSS	
		JULY, 2017	
		POST BASE SUPPORT DETAILS	SCST-06-17