

PLAN
(SW-542 EXTENSION AND SW-541 INTAKE)

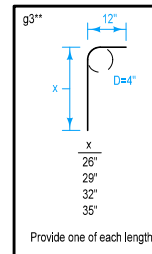
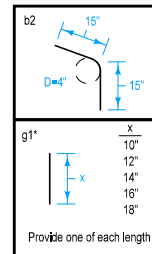
Extension unit may be used on either or both sides of SW-541 intakes. Details are similar when extension unit is on the opposite side.

Dimensions shown are for the construction of a 6 inch standard curb as a part of pavement. Modifications may be made to conform to other curb shapes.

① The location station is where the centerline of intake meets the back of the curb line.

Placing sequence: 1. Base; 2. Walls and Extension; 3. Top; 4. Insert

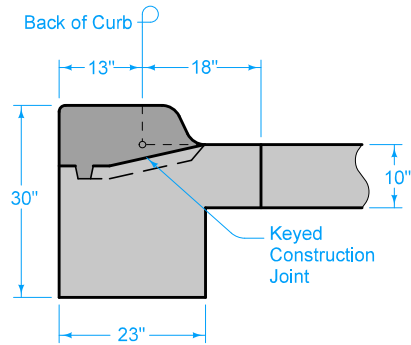
REINFORCING BAR LIST							
BAR	SIZE	LOCATION	SHAPE	NO.	LENGTH	WEIGHT	SPACING
b2	4	Intake Wall		3	2'-6"	5.0	9"
f1	4	Bottom		3	4'-9"	9.5	9"
f2	4	Bottom		4	1'-7"	4.2	18"
g1	4	Wall		5	Varies*	3.9	12"
g2	4	Wall		1	4'-8"	3.1	-
g3	4	Top		4	Varies**	6.8	18"
g4	4	Top		3	6'-4"	12.7	-
Total						45 lbs.	



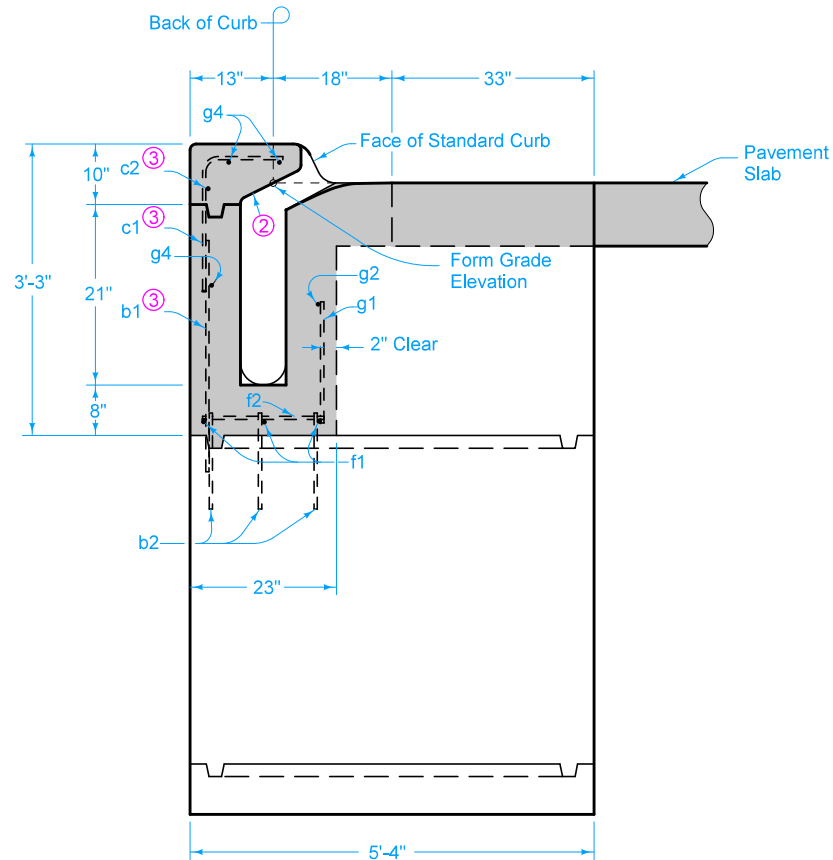
Possible Contract Item:

Intake Extension Unit, SW-542

 STANDARD ROAD PLAN	REVISION	
	1	04-18-17
	SW-542	
SHEET 1 of 3		
<small>REVISIONS: Modified notes to clarify the use of SW-541. Added SW-602 callout on Plan View on page 1.</small>		
 <small>APPROVED BY DESIGN METHODS ENGINEER</small>		
EXTENSION UNIT FOR OPEN-THROAT CURB INTAKE UNDER PAVEMENT		

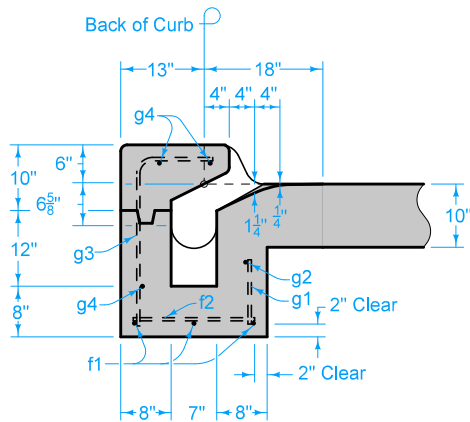


SECTION A-A



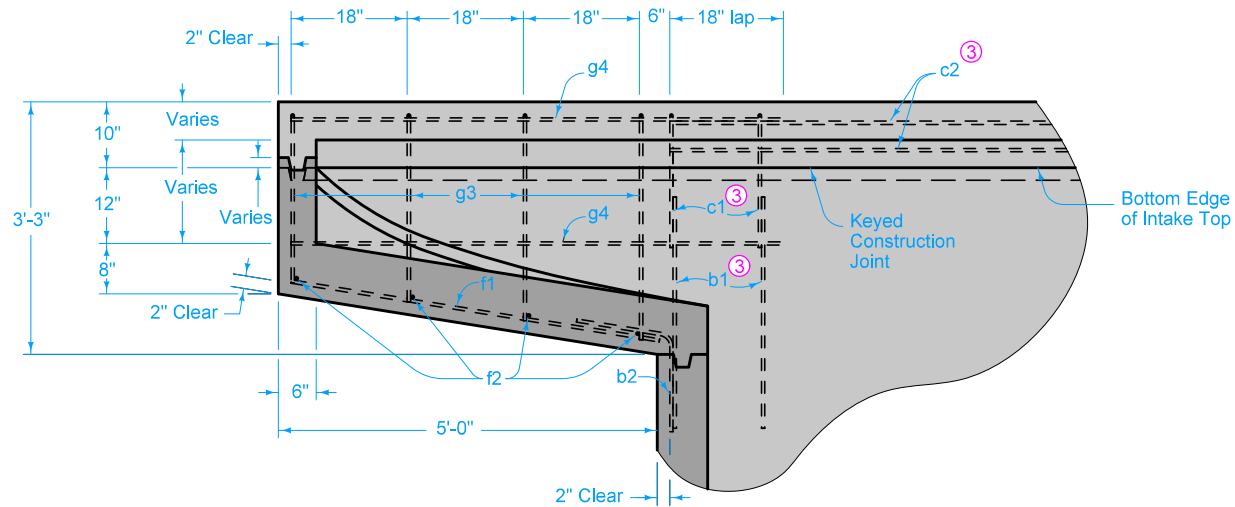
SECTION C-C

- ② 2:1 Slope (Horizontal:Vertical)
- ③ See SW-541 for reinforcing.



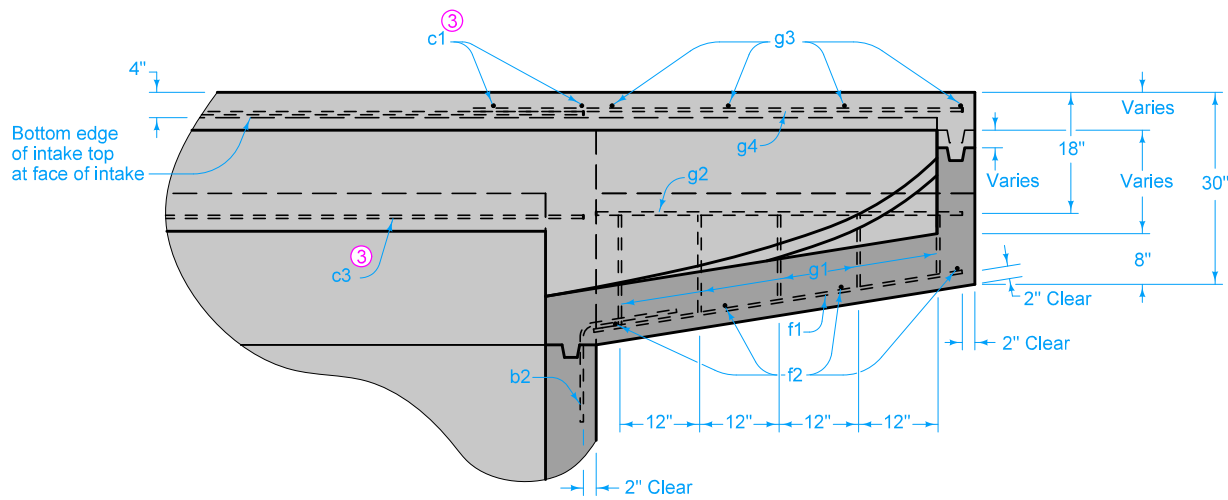
SECTION B-B

IOWA DOT	REVISION	
	1	04-18-17
STANDARD ROAD PLAN		SW-542
		SHEET 2 of 3
<small>REVISIONS: Modified notes to clarify the use of SW-541. Added SW-602 callout on Plan View on page 1.</small>		
<i>Brian Smith</i> <small>APPROVED BY DESIGN METHODS ENGINEER</small>		
EXTENSION UNIT FOR OPEN-THROAT CURB INTAKE UNDER PAVEMENT		



③ See SW-541 for reinforcing.

SECTION D-D



SECTION E-E

	REVISION	1	04-18-17
	STANDARD ROAD PLAN	SW-542	
	SHEET 3 of 3		
<small>REVISIONS: Modified notes to clarify the use of SW-541. Added SW-602 callout on Plan View on page 1.</small>			
<small>APPROVED BY DESIGN METHODS ENGINEER</small>			
EXTENSION UNIT FOR OPEN-THROAT CURB INTAKE UNDER PAVEMENT			