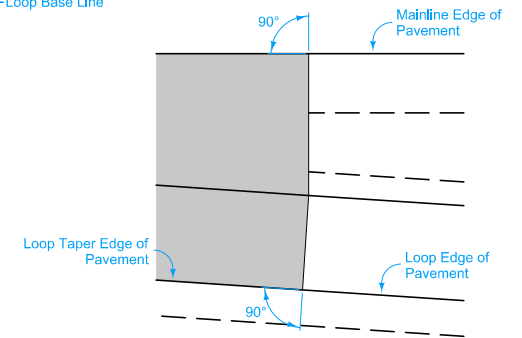


Construct loop exit pavement the same thickness as mainline pavement.

Loop exit pavement shown by shaded area is 1332 square yards.

For joint details, see PV-101

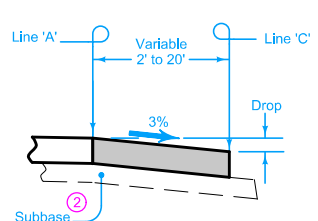
- ① For header construction details at the beginning of taper, see Typical 7101 or Typical 7102.
- ② Construct subbase for loop exit pavement the same thickness as mainline subbase.



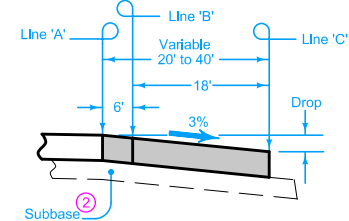
DETAIL A

TABLE OF OFFSETS AND DROPS FOR 18' LOOP TAPER

DISTANCE FROM POINT C ALONG LINE 'A' (FL)		600	575	550	525	500	475	450	425	400	375	350	325	300	275	250	225	200	175	150	125	100	75	50	25	0				
From Line 'A' To Line 'B'	OFFSET (FL)													2.00	3.67	5.33	7.00	8.67	10.33	12.00	13.67	15.33	17.00	18.67	20.33	22.00				
	SLOPE (%)														← Constant 3.0% Slope →															
	DROP (FL)														0.06	0.11	0.16	0.21	0.26	0.31	0.36	0.41	0.46	0.51	0.56	0.61	0.66			
From Line 'B' To Line 'C'	OFFSET (FL)																													
	SLOPE (%)														← Constant 3.0% Slope →															
	DROP (FL)														0.54	0.54	0.54	0.54	0.54	0.54	0.54	0.54	0.54	0.54	0.54	0.54	0.54			
From Line 'A' To Line 'C'	OFFSET (FL)	0	1.67	3.33	5.00	6.67	8.33	10.00	11.67	13.33	15.00	16.67	18.33																	
	SLOPE (%)		← Constant 3.0% Slope →																											
	DROP (FL)	0	0.05	0.10	0.15	0.20	0.25	0.30	0.35	0.40	0.45	0.50	0.56	0.60	0.65	0.70	0.75	0.80	0.85	0.90	0.95	1.00	1.05	1.10	1.15	1.20				



SECTION A-A



SECTION B-B

TABLE OF SHOULDER TRANSITION LENGTHS

W	Shoulder Width beyond Edge of Mainline Pavement		
	8'	10'	12'
12'	NA	60'	90'
14'	30'	60'	NA

NOTE: W₁ is the width of the outside lane to the Edge of Pavement.

STANDARD ROAD PLAN

REVISION
3 10-17-17

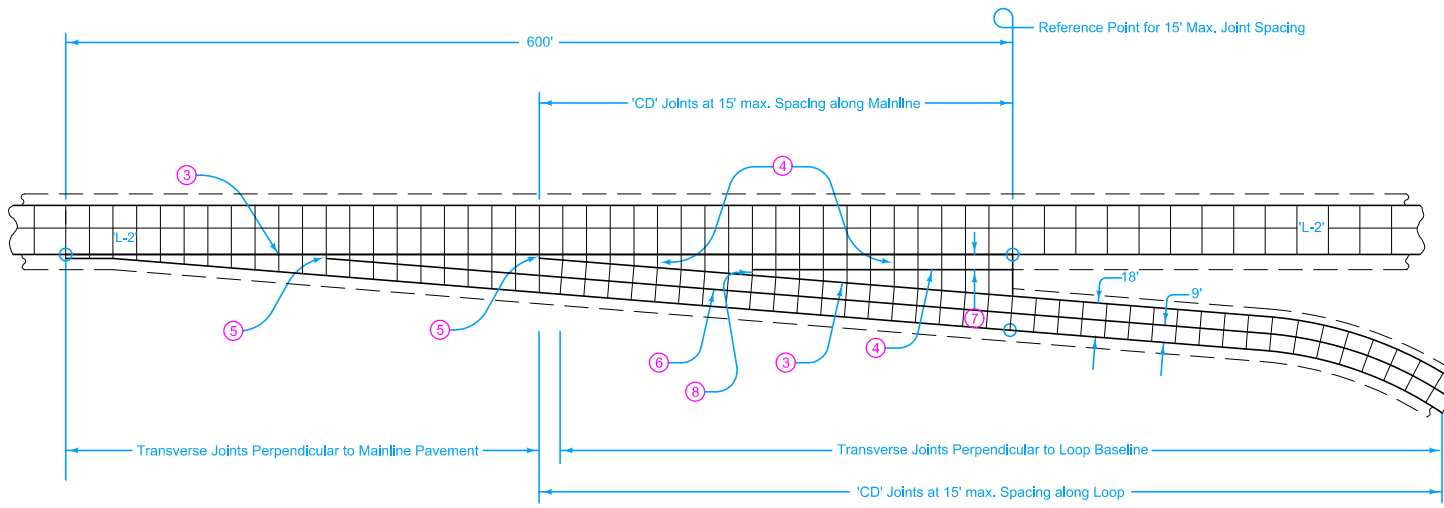
PV-412

SHEET 1 of 2

REVISIONS: Modified the location of the 'L-2' Joint on loop pavement. Moved the location of Point M. Added Detail A. Modified circle notes on page 2.

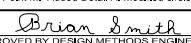
APPROVED BY DESIGN METHODS ENGINEER
Brian Smith

**DECELERATION TAPER
FOR 18' EXIT LOOP**



- ③ 'BT-2' or 'KT-2' Joint.
- ④ 'C' Joint.
- ⑤ 'B' Joint. 2' minimum, 4' maximum.
- ⑥ 'L-2' Joint.
- ⑦ 10' minimum or equal to mainline shoulder width.
- ⑧ 'B' or 'C' Joint. 2' minimum. 4' maximum.

18' EXIT LOOP

IOWA DOT	REVISION	
	3	10-17-17
STANDARD ROAD PLAN		PV-412
		SHEET 2 of 2
<small>REVISIONS: Modified the location of the 'L-2' Joint on loop pavement. Moved the location of Point M. Added Detail A. Modified circle notes on page 2.</small>		
 <small>APPROVED BY DESIGN METHODS ENGINEER</small>		
DECCELERATION TAPER FOR 18' EXIT LOOP		