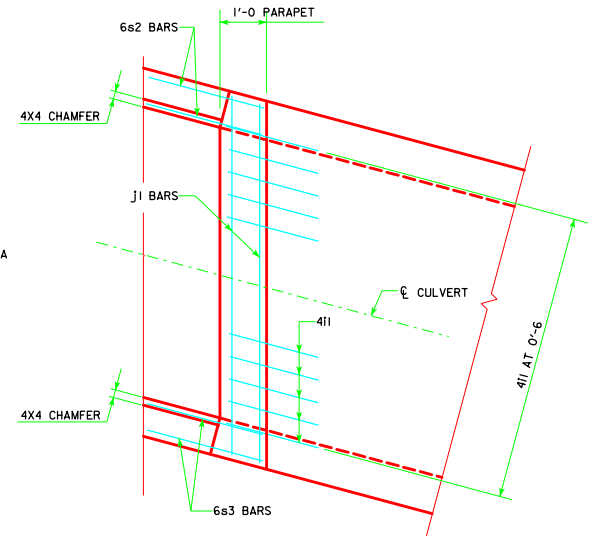


PLAN VIEW - TOP APRON REINFORCING



DETAIL A
SHOWING PARAPET BARS ONLY

NOTES :

1. BAR SPACINGS AND POSITIONS SHOWN ARE SIMILAR FOR ALL SIZES OF HEADWALLS IN THIS STANDARD.
2. FOR HEADWALL DIMENSIONS AND BAR SPACING SEE DRAWING PWH 15-1-12.
3. TOP TRANSVERSE APRON BARS ARE REFERENCED APPROXIMATELY 4" FROM THE BACK OF THE PARAPET FOR ALL HEADWALLS.

LATEST REVISION DATE	APPROVED BY BRIDGE ENGINEER	STANDARD DESIGN - SINGLE REINFORCED CONCRETE BOX CULVERTS PARALLEL WING HEADWALLS APRIL, 2012
PARAPET REINFORCING & TOP APRON REINFORCING 15° SKEW		PWH 15-4-12