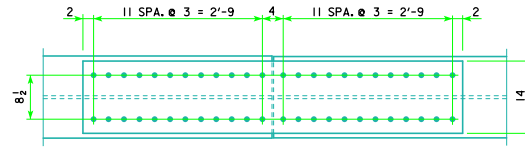
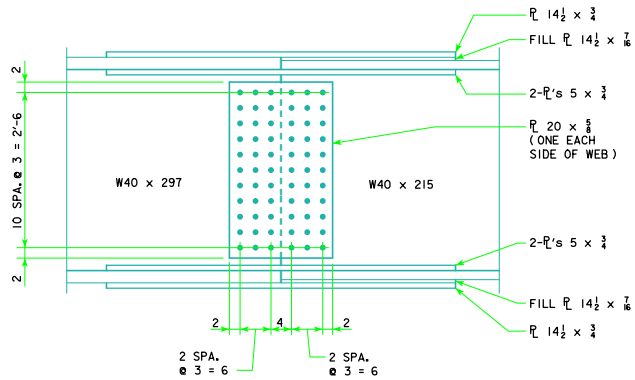


TOP AND BOTTOM FLANGE



TOP AND BOTTOM FLANGE

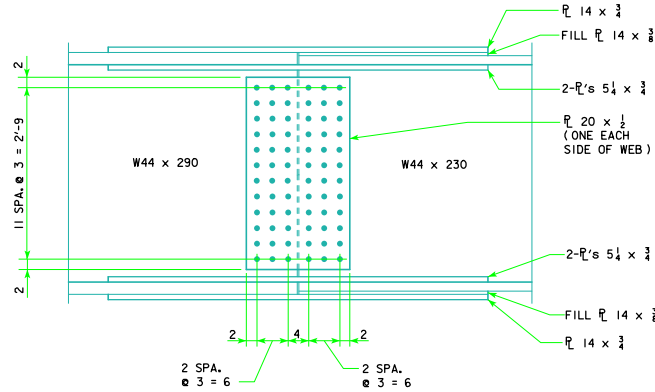


BOLTED SPLICE DETAILS

320' BEAM SPLICE

NOTE: ALL BOLTS 3/4"Ø

STRUCTURAL STEEL
ONE SPLICE
1,270 (LBS.)



BOLTED SPLICE DETAILS

340' BEAM SPLICE

NOTE: ALL BOLTS 3/4"Ø

STRUCTURAL STEEL
ONE SPLICE
1,304 (LBS.)

NOTE: STRUCTURAL STEEL WEIGHT INCLUDES WEIGHT OF SPLICE PLATES, FILL PLATES, BOLTS, NUTS AND WASHERS.

NOTE: STRUCTURAL STEEL WEIGHT IS INCLUDED ON THE SUMMARY QUANTITIES SHEET.

LATEST REVISION DATE	 APPROVED BY BRIDGE ENGINEER	
		STANDARD DESIGN - 40' ROADWAY, 3 SPAN BRIDGES ROLLED STEEL BEAM BRIDGES OCTOBER, 2014
		BOLTED FIELD SPLICE DETAILS SHEET 3
		RS40-086-14