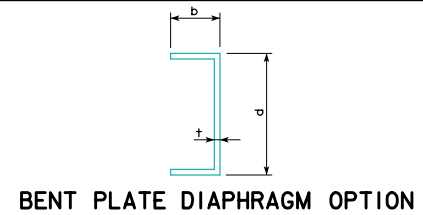
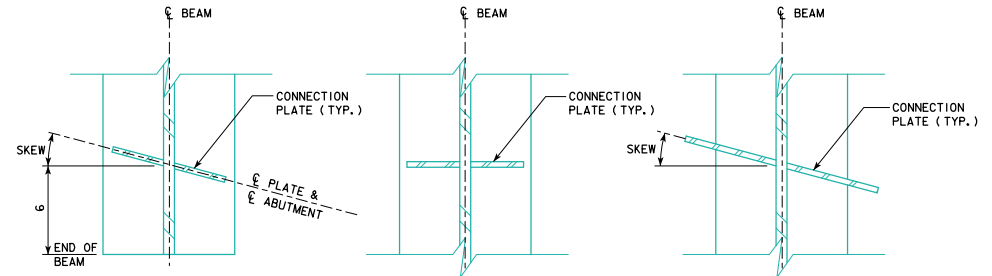
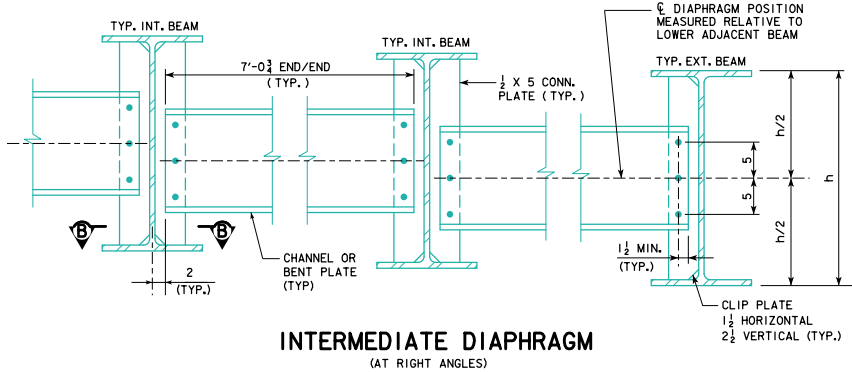


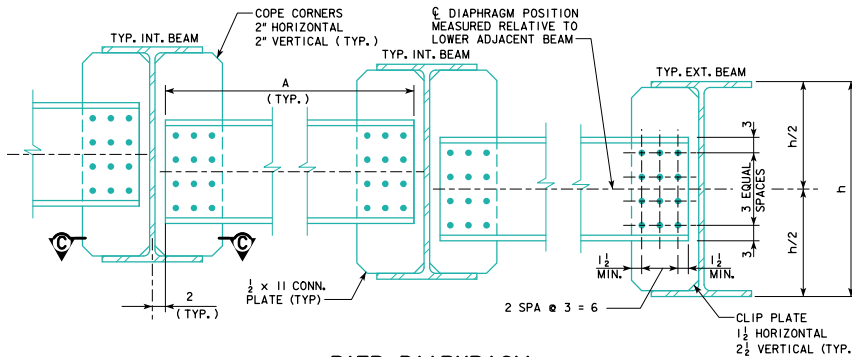
SKEW	a (FT-IN)
0°	7'-0 <sup>3</sup> / <sub>4</sub>
10°	7'-2 <sup>1</sup> / <sub>8</sub>
20°	7'-6 <sup>3</sup> / <sub>8</sub>
30°	8'-1 <sup>7</sup> / <sub>8</sub>
45°	9'-11 <sup>3</sup> / <sub>8</sub>



DIAPHRAGM LOCATION	BEAM SIZE	CHANNEL OPTION		BENT PLATE OPTION			
		DESIGNATION	CONN. BOLTS	d (IN)	b (IN)	t (IN)	CONN. BOLTS
INTERMEDIATE	W30 & W33	C15x33.9	3 - 2 <sup>1</sup> / <sub>8</sub> "φ	15	4	3 <sup>3</sup> / <sub>8</sub>	3 - 2 <sup>1</sup> / <sub>8</sub> "φ
INTERMEDIATE	W36, W40 & W44	MC18x42.7	3 - 2 <sup>1</sup> / <sub>8</sub> "φ	18	4	3 <sup>3</sup> / <sub>8</sub>	3 - 2 <sup>1</sup> / <sub>8</sub> "φ
ABUTMENT	ALL	C12x20.7	3 - 2 <sup>1</sup> / <sub>8</sub> "φ	12	4	3 <sup>3</sup> / <sub>8</sub>	3 - 2 <sup>1</sup> / <sub>8</sub> "φ
PIER	W30 & W33	C15x33.9	12 - 2 <sup>1</sup> / <sub>8</sub> "φ	15	4	3 <sup>3</sup> / <sub>8</sub>	12 - 2 <sup>1</sup> / <sub>8</sub> "φ
PIER	W36, W40 & W44	MC18x42.7	12 - 2 <sup>1</sup> / <sub>8</sub> "φ	18	4	3 <sup>3</sup> / <sub>8</sub>	12 - 2 <sup>1</sup> / <sub>8</sub> "φ



NOTES:  
1. EITHER CHANNEL OR BENT PLATE DIAPHRAGM OPTION MAY BE SELECTED AT CONTRACTOR'S OPTION.



SKEW	A (FT-IN)
0°	7'-0 <sup>3</sup> / <sub>4</sub>
10°	7'-2 <sup>1</sup> / <sub>8</sub>
20°	7'-6 <sup>3</sup> / <sub>8</sub>
30°	8'-1 <sup>7</sup> / <sub>8</sub>
45°	7'-0 <sup>3</sup> / <sub>4</sub>

LATEST REVISION DATE	 APPROVED BY BRIDGE ENGINEER	 STANDARD DESIGN - 40' ROADWAY, 3 SPAN BRIDGES <b>ROLLED STEEL BEAM BRIDGES</b> JUNE, 2010	<b>DIAPHRAGM DETAILS</b> <b>SHEET 1</b>	<b>RS40-081-10</b>