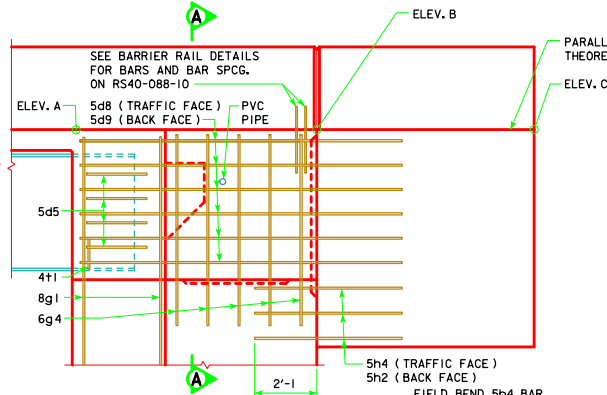


PART LONGITUDINAL SECTION NEAR GUTTER

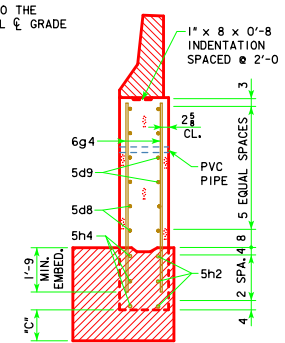
NOTE:
 PLUG 3" PVC PIPE WITH
 EXPANDING FOAM PRIOR
 TO BACKFILLING BEHIND
 ABUTMENTS.

NOTE:
 FOR ELEVATION A, ELEVATION B, ELEVATION C AND
 DIMENSION C SEE "MISCELLANEOUS DETAILS"
 FOR THE APPROPRIATE LENGTH BRIDGE.

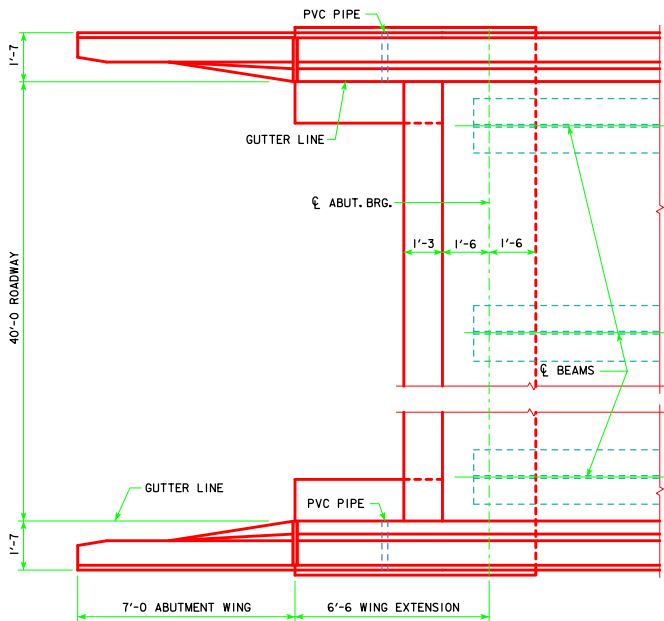


PART END VIEW AT ABUTMENT

FIELD BEND 5h4 BAR
 AS NECESSARY TO
 AVOID PILE IN
 ABUTMENT WING.

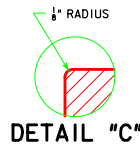


SECTION A-A



PART PLAN

(STEEL DIAPHRAGMS NOT SHOWN)



DETAIL "C"

REVISED 01-12 - ADDED FIELD BEND 5h4 BAR TO AVOID PILE IN ABUTMENT WING NOTE.

LATEST REVISION DATE 01-12 APPROVED BY BRIDGE ENGINEER <i>Norman E. McQuinn</i>		
	STANDARD DESIGN - 40' ROADWAY, 3 SPAN BRIDGES ROLLED STEEL BEAM BRIDGES JUNE, 2010	
	LONGITUDINAL SECTION 0° SKEW	RS40-020-10