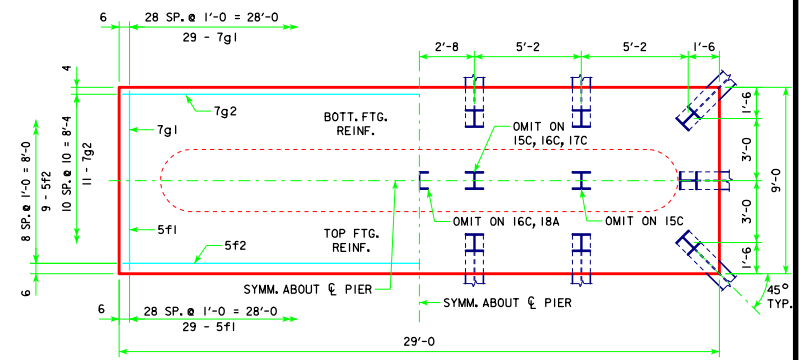
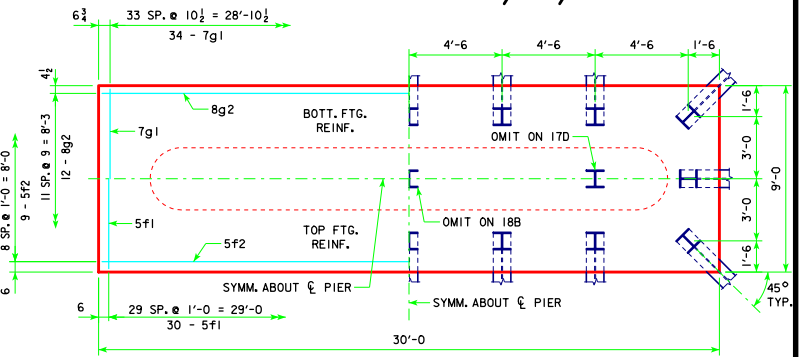


4'-0 x 8'-0 x 29'-0 FOR 15B, 16B & 17B



4'-0 x 9'-0 x 29'-0 FOR 15C, 16C, 17C & 18A



4'-0 x 9'-0 x 30'-0 FOR 17D & 18B

**FOOTING NOTES:**

THESE FOOTINGS ARE DESIGNED AND DETAILED TO BE USED WITH THE CAP AND COLUMN DETAILS OF THE TEE PIERS AS SHOWN ON SHEET H40-81-14.

BATTER PILES IN EXTERIOR ROWS 1/4 IN THE DIRECTION SHOWN.

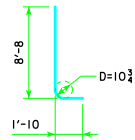
STEEL PILING USED AS POINT BEARING SHALL HAVE A MINIMUM DISTANCE OF APPROXIMATELY 10 FEET FROM BOTTOM OF FOOTING TO TOP OF BEARING ROCK. THE PILE LAYOUTS ARE SUCH THAT THE DISTANCE CENTER TO CENTER OF ADJACENT PILING SHALL NOT EXCEED 8'-0.

PIER PILES SHALL BE DRIVEN TO VALUES SHOWN IN DESIGN PLANS.

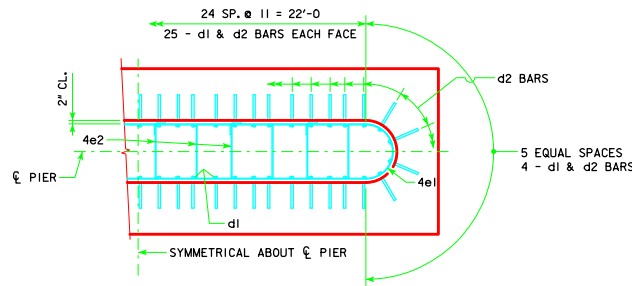
- NOTE: THE REINFORCING STEEL QUANTITY IS TO BE INCLUDED ON THE SUMMARY QUANTITIES SHEET IN THE PLAN.
- NOTE: THE CONCRETE QUANTITY IS TO BE INCLUDED ON THE SUMMARY QUANTITIES SHEET IN THE PLAN.
- NOTE: THE PILE TYPE IS TO BE INCLUDED ON THE SUMMARY QUANTITIES SHEET IN THE PLAN.

H IN FT.	CL. - CL. ABUT. - BRG.	PILING (HP10x57)		FOOTING SIZE
		NO. & LAYOUT	(1) LRFD PU, STRENGTH I DES. LOAD (KIPS)	
25 TO 27	201'-4	15B	217	4' x 8' x 29'
		16B	210	
		16B	219	
		17B	219	
28 TO 30	201'-4	16C	206	4' x 9' x 29'
		16C	213	
		17C	213	
		18A	213	
31 TO 33	201'-4	16C	210	4' x 9' x 29'
		16C	217	
		17C	218	
		18A	217	
34 TO 36	201'-4	17D	203	4' x 9' x 30'
		17D	209	
		17D	218	
		18B	211	
37 TO 40	201'-4	17D	208	4' x 9' x 30'
		17D	215	
		18B	211	
		18B	217	

NOTE: PU, STRENGTH I DESIGN LOAD (KIPS) IS NOT THE VALUE USED IN THE FIELD FOR DRIVING PILES.



**d2**  
NOTE: D = PIN DIAMETER. DIMENSIONS ARE OUT TO OUT.



**d2 LAYOUT**  
(SEE SECTION A-A ON SHEET H40-81-14.)

FOOTING SIZE	REINFORCING STEEL (ONE FOOTING)			TOTAL WEIGHT (LB.)	STRUCTURAL CONCRETE (CY)
	BAR NO., SIZE & SPACING	LENGTH	WEIGHT (LB.)		
4' x 8' x 29'	d2 58 - #10 AS SHOWN	10'-6	2621	4071	34.4
	f1 29 - #5 @ 1'-0	7'-8	232		
	f2 8 - #5 @ 1'-0	28'-8	339		
	g1 29 - #6 @ 1'-0	7'-8	334		
	g2 11 - #7 @ 0'-9	28'-8	645		
4' x 9' x 29'	d2 58 - #10 AS SHOWN	10'-6	2621	4311	38.7
	f1 29 - #5 @ 1'-0	8'-8	262		
	f2 9 - #5 @ 1'-0	28'-8	269		
	g1 29 - #7 @ 1'-0	8'-8	514		
	g2 11 - #7 @ 0'-10	28'-8	645		
4' x 9' x 30'	d2 58 - #10 AS SHOWN	10'-6	2621	4723	40.0
	f1 30 - #5 @ 1'-0	8'-8	271		
	f2 9 - #5 @ 1'-0	29'-8	278		
	g1 34 - #7 @ 0'-10 1/2	8'-8	602		
	g2 12 - #8 @ 0'-9	29'-8	951		

LATEST REVISION DATE	 APPROVED BY BRIDGE ENGINEER	 STANDARD DESIGN - 40' ROADWAY, THREE SPAN BRIDGE <b>PRETENSIONED PRESTRESSED CONCRETE BEAM BRIDGES</b> SEPTEMBER, 2014	<b>H40-86-14</b>
		<b>TEE PIER-HP10x57 SRL-2</b> <b>STEEL PILE FOOTINGS</b>	
		45° SKEW - H=25' TO 40'	