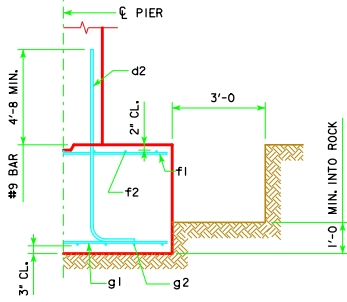
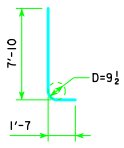


REVISED 04-12 - EXCAVATION LIMIT WAS CHANGED TO 3'-0".



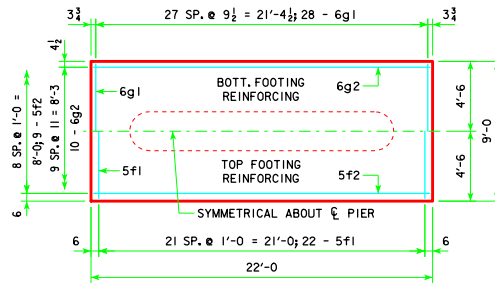
**TYPICAL SECTION**

H IN FT.	CL - CL ABUT. BRG.	FOOTING SIZE
16 TO 18	138'-10	3'-6 x 9' x 22'
	151'-4	3'-6 x 9' x 24'
	163'-10	3'-6 x 9' x 26'
	176'-4	3'-6 x 10' x 26'
	188'-10	3'-6 x 9' x 22'
19 TO 21	201'-4	3'-6 x 9' x 24'
	213'-10	3'-6 x 9' x 26'
	226'-4	3'-6 x 10' x 26'
	243'-0	3'-6 x 9' x 22'
	22 TO 24	138'-10
151'-4		3'-6 x 9' x 24'
163'-10		3'-6 x 9' x 26'
176'-4		3'-6 x 10' x 26'
188'-10		3'-6 x 9' x 22'

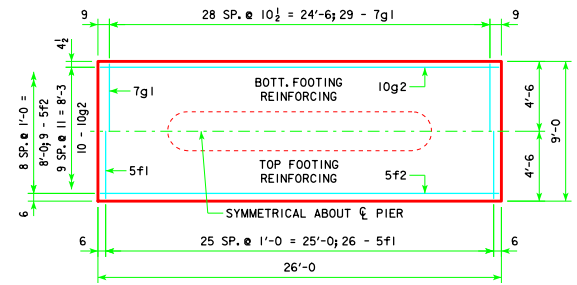


**d2**

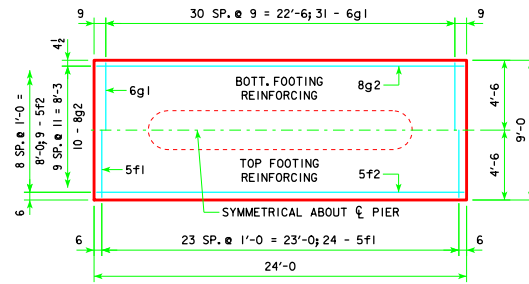
NOTE: D = PIN DIAMETER. DIMENSIONS ARE OUT TO OUT.



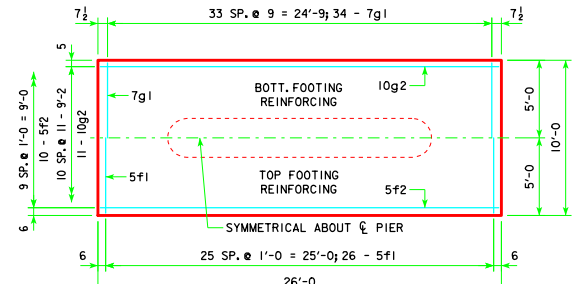
**3'-6 x 9'-0 x 22'-0**



**3'-6 x 9'-0 x 26'-0**

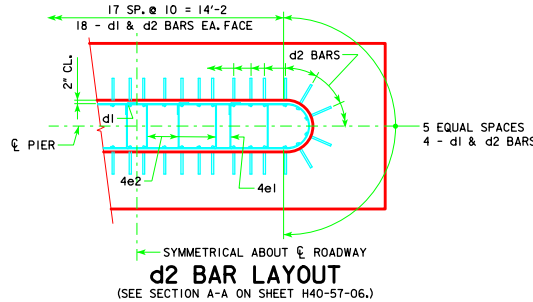


**3'-6 x 9'-0 x 24'-0**



**3'-6 x 10'-0 x 26'-0**

FOOTING SIZE	REINFORCING STEEL (ONE FOOTING)				TOTAL WEIGHT (LB.)	STRUCTURAL CONCRETE (CY)
	BAR	NO., SIZE & SPACING	LENGTH	WEIGHT (LB.)		
3'-6 x 9' x 22'	d2	44 - #9 AS SHOWN	9'-5	1409	2500	25.7
	f1	22 - #5 @ 1'-0	8'-8	199		
	f2	9 - #5 @ 1'-0	21'-8	203		
	g1	28 - #6 @ 0'-9 1/2	8'-8	364		
	g2	10 - #6 @ 0'-11	21'-8	325		
3'-6 x 9' x 24'	d2	44 - #9 AS SHOWN	9'-5	1409	2884	28.0
	f1	24 - #5 @ 1'-0	8'-8	217		
	f2	9 - #5 @ 1'-0	23'-8	222		
	g1	31 - #6 @ 0'-9	8'-8	404		
	g2	10 - #6 @ 0'-11	23'-8	632		
3'-6 x 9' x 26'	d2	44 - #9 AS SHOWN	9'-5	1409	3503	30.3
	f1	26 - #5 @ 1'-0	8'-8	235		
	f2	9 - #5 @ 1'-0	25'-8	241		
	g1	29 - #7 @ 0'-10 1/2	8'-8	514		
	g2	10 - #10 @ 0'-10	25'-8	1104		
3'-6 x 10' x 26'	d2	44 - #9 AS SHOWN	9'-5	1409	3826	33.7
	f1	26 - #5 @ 1'-0	9'-8	262		
	f2	10 - #5 @ 1'-0	25'-8	268		
	g1	34 - #7 @ 0'-9	9'-8	672		
	g2	11 - #10 @ 0'-11	25'-8	1215		



**FOOTING NOTES:**

THESE SPREAD FOOTINGS ARE DESIGNED AND DETAILED TO BE USED WITH THE CAP AND COLUMN DETAILS OF THE TEE PIERS AS SHOWN ON SHEET H40-57-06.

THESE SPREAD FOOTINGS SHALL EXTEND AT LEAST 12 INCHES INTO SUITABLE FOUNDATION ROCK AND THE LAST 12 INCHES OF ROCK EXCAVATION SHALL BE TO NEAT LINES OF MASONRY. THE FOUNDATION ROCK SHALL HAVE A MINIMUM LRFD NOMINAL BEARING RESISTANCE OF 30 KIPS PER SQUARE FOOT (ALLOWABLE SERVICE LOAD BEARING VALUE OF AT LEAST 10 KIPS PER SQUARE FOOT).

04-12 LATEST REVISION DATE  <i>Thomas E. Mc Donald</i> APPROVED BY BRIDGE ENGINEER	
	STANDARD DESIGN - 40' ROADWAY, THREE SPAN BRIDGE <b>PRETENSIONED PRESTRESSED CONCRETE BEAM BRIDGES</b> AUGUST, 2009
	<b>TEE PIER - SPREAD FOOTINGS</b> 0° SKEW - H=16' TO 24' <span style="float: right;"><b>H40-63-06</b></span>