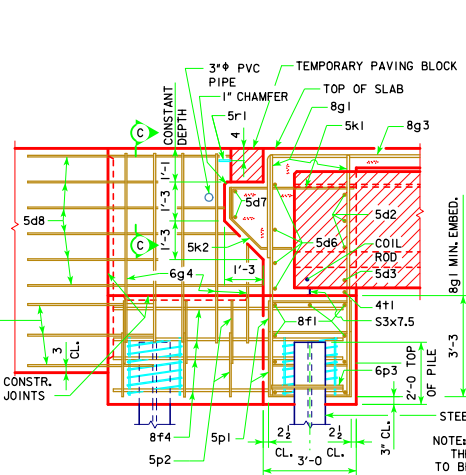
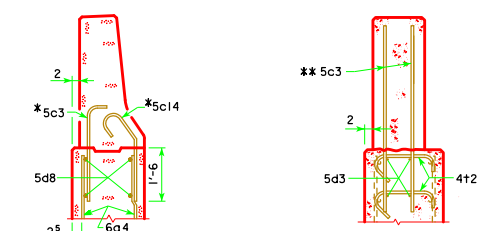


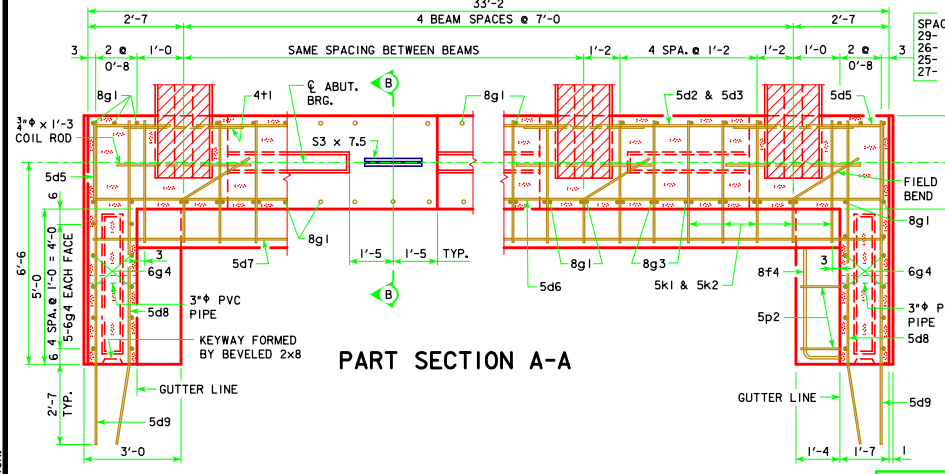
**PART REAR ELEVATION AT ABUTMENT**  
 NOTE: BARRIER RAIL AND WINGS NOT SHOWN.  
 (SHOWN FOR SOLID BARRIER RAIL)



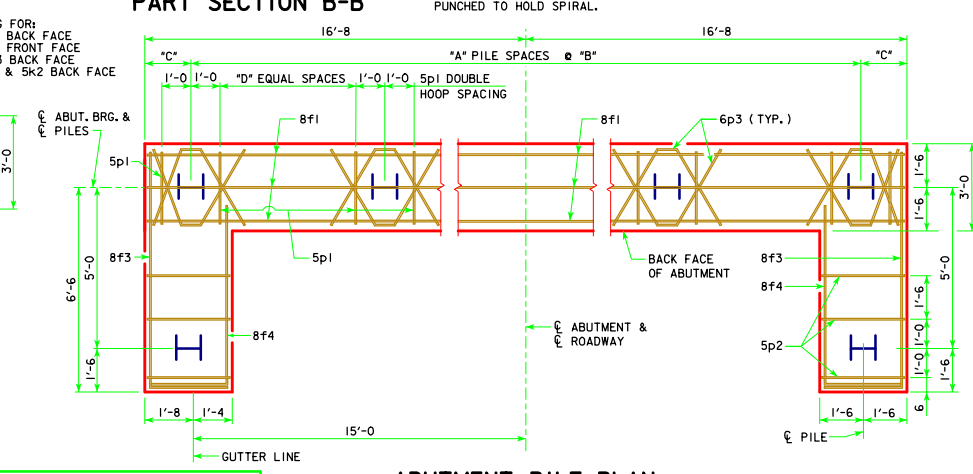
**PART SECTION B-B**



**PART SECTION C-C**  
 \*\* NOTE: SEE OPEN RAIL SHEET H30SI-34-12 FOR DETAILS. REINFORCING BARS 5c3 AND 5c14 ARE INCLUDED IN SUPERSTRUCTURE QUANTITIES.



**PART SECTION A-A**



**ABUTMENT PILE PLAN**

**ABUTMENT NOTES:**  
 MINIMUM CLEAR DISTANCE FROM FACE OF CONCRETE TO NEAR REINFORCING BAR IS TO BE 2" UNLESS OTHERWISE NOTED OR SHOWN.  
 ABUTMENT PILES SHALL BE DRIVEN TO VALUES SHOWN IN DESIGN PLANS.  
 BARRIER RAIL NOT SHOWN IN DETAILS.  
 IF ROCK IS CLOSER THAN 15' BELOW ABUTMENT FOOTING, SPECIAL ANALYSIS MAY BE REQUIRED.

ABUTMENT PILE SPACING	
DIMENSION OR NO.	CL TO CL ABUTMENT BEARING
	80'-0" 90'-0" 100'-0" 110'-0"
*A* PILE SPACES	6 7 8 8
*B* (FT. - IN.)	5'-0" 4'-4" 3'-9" 3'-9"
*C* (FT - IN.)	1'-8" 1'-6" 1'-8" 1'-8"
*D* EQUAL SPACES	3 3 2 2
NO. OF PILES PER ABUT.	9 10 11 11
P <sub>u</sub> STRENGTH   DESIGN LOAD (KIPS)	137 133 126 133

NOTE: P<sub>u</sub> STRENGTH | DESIGN LOAD (KIPS) IS NOT THE VALUE USED IN THE FIELD FOR DRIVING PILES.

LATEST REVISION DATE  
 05-13  
 APPROVED BY BRIDGE ENGINEER  
*Thomas E. McQuill*

**Iowa Department of Transportation**  
 Highway Division  
 STANDARD DESIGN - 30' ROADWAY, SINGLE SPAN BRIDGE  
**PRETENSIONED PRESTRESSED CONCRETE BEAM BRIDGES**  
 APRIL, 2012

---

**ABUTMENT DETAILS**      **H30SI-04-12**  
 0° SKEW C & D BEAMS

REVISED 05-13 - REVISION FOR LRFD PILE DESIGN.