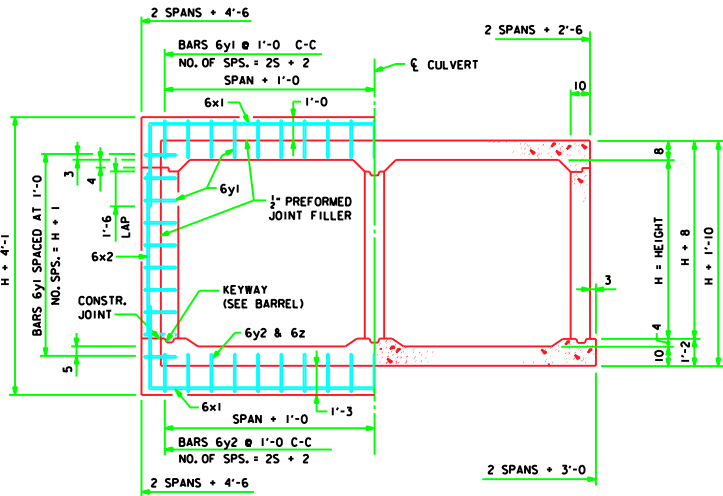
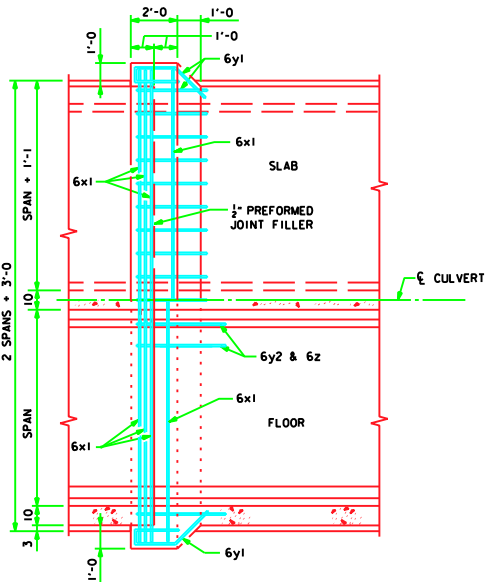


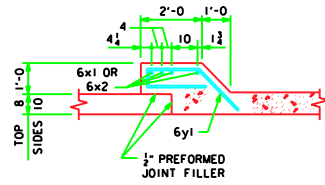
REVISED 04-07 - ADDED BAR SIZE TO BAR LABEL IN BAR LIST AND SHOWED BAR WEIGHTS PER BAR LABEL. 6x BAR LENGTHS CHANGED. TWCBJ 1-87



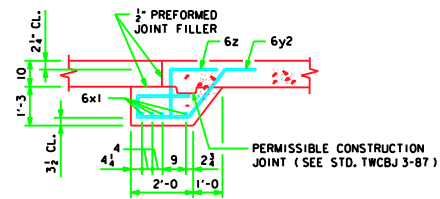
JOINT DETAIL SECTION THRU BARREL



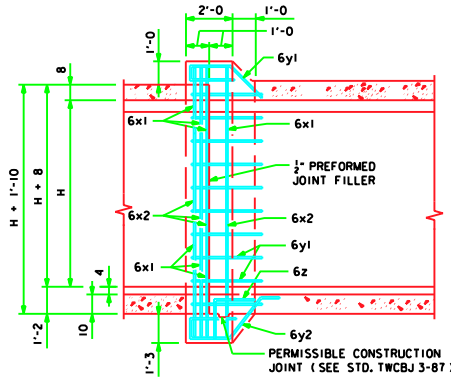
PLAN VIEW



TOP & SIDES - BARS 6y1



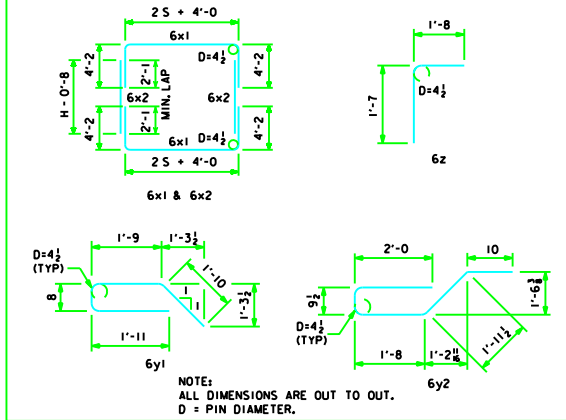
BOTTOM BARS - 6y2 & 6z



LONGITUDINAL SECTION

CONCRETE PLACEMENT				ESTIMATE OF QUANTITIES - ONE JOINT - 8' SPAN											
SIZE	FOOTING	WALLS	SLAB	BILL OF REINFORCING STEEL			8' x 6'			8' x 8'			8' x 10'		
				MARK	LOCATION	SHAPE	NO.	LENGTH	WEIGHT	NO.	LENGTH	WEIGHT	NO.	LENGTH	WEIGHT
8' x 6'	2,511	1,049	2,071	6x1	SLAB AND FLOOR		8	28'-4"	340	8	28'-4"	340	8	28'-4"	340
8' x 8'	2,511	1,420	2,071	6x2	WALLS		8	5'-4"	64	8	7'-4"	88	8	9'-4"	112
8' x 10'	2,511	1,790	2,071	6y1	TOP AND SIDES		35	6'-2"	324	39	6'-2"	361	43	6'-2"	398
				6y2	BOTTOM		19	7'-3"	207	19	7'-3"	207	19	7'-3"	207
				6z	BOTTOM & FLOOR		19	3'-3"	93	19	3'-3"	93	19	3'-3"	93
				TOTAL WEIGHT (LBS.)			1028			1089			1150		
				TOTAL CONCRETE			5.6 cu. yds.			6.0 cu. yds.			6.4 cu. yds.		

BENT BAR DETAILS



NOTES:

1. DIMENSIONS AND QUANTITIES SHOWN BASED ON SLAB THICKNESS OF 8", WALL = 10", AND FLOOR = 10".
2. CHANGE LENGTHS OF BARS 6x1, 6z, AND ADJUST REINFORCING STEEL AND CONCRETE QUANTITIES ACCORDINGLY FOR SLAB, WALL, AND FLOOR THICKNESSES OTHER THAN SHOWN.
3. ALL BAR LENGTHS ARE ESTIMATED WITH A 2" CLEARANCE FROM CONCRETE EDGE TO OUTSIDE OF BAR, EXCEPT AS NOTED.
4. MATERIAL AND CONSTRUCTION TO BE IN ACCORDANCE WITH THE CURRENT STANDARD SPECIFICATIONS OF I.D.O.T.
5. SEE DRAWING TWRCB-G1-87 FOR GENERAL INFORMATION, SPECIFICATIONS, AND DESIGN STRESSES.
6. BARS 6x1 MAY BE FURNISHED IN TWO EQUAL LENGTHS ADDING 2'-0" TO THE OVERALL LENGTH TO OBTAIN A 2'-0" MIN. LAP. THE ABOVE IS TO BE PERFORMED AT NO ADDITIONAL COST TO THE CONTRACTING AUTHORITY.
7. BARREL FLOOR BARS m1 ARE TO BE SHORTENED 6" AT BELL JOINTS.

LATEST REVISION DATE : 04-07		STANDARD DESIGN	
		CULVERT BELL JOINTS	
APPROVED BY :		FOR	
		TWIN REINFORCED CONCRETE BOX CULVERTS	
		8' SPAN	
		IOWA DEPARTMENT OF TRANSPORTATION - HIGHWAY DIVISION	
		JULY , 1987	TWCBJ 1-87