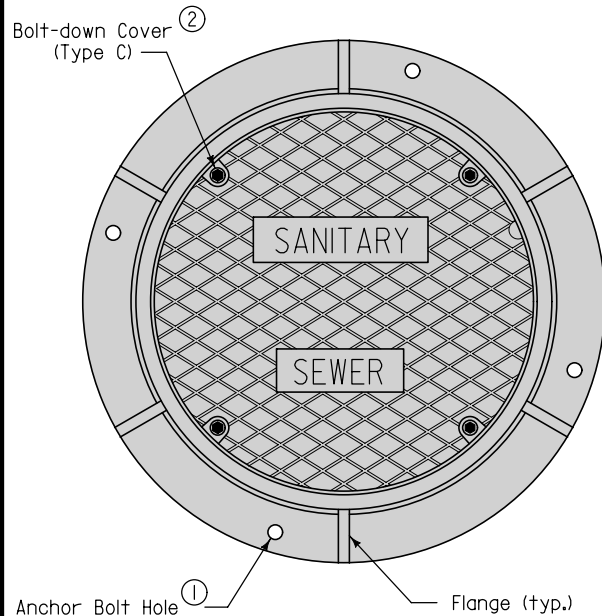


### TYPE A

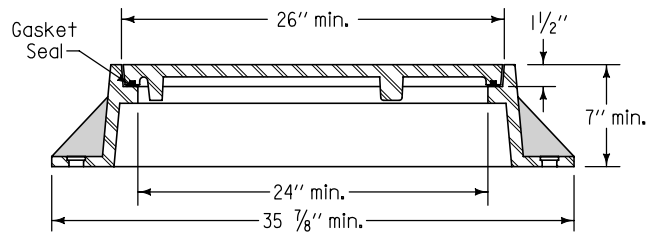
Two-piece fixed casting

### TYPE C

Two-piece fixed casting with bolt-down cover<sup>②</sup>



PLAN



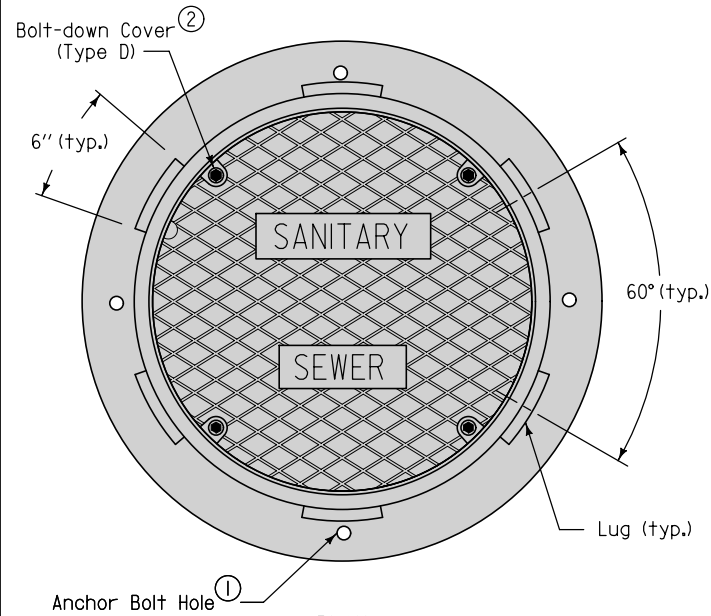
TYPICAL SECTION

### TYPE B

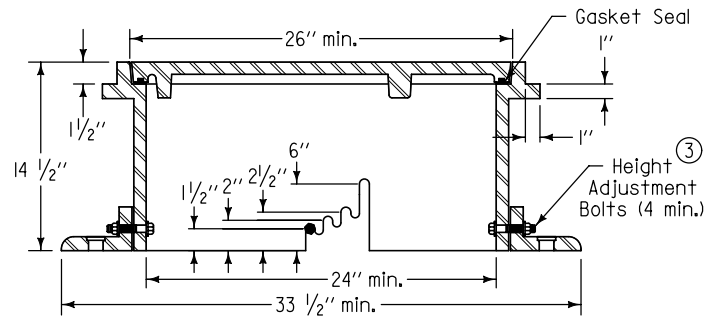
Three-piece floating casting

### TYPE D

Three-piece floating casting with bolt-down cover<sup>②</sup>



PLAN







TYPICAL SECTION

Frame Notes:  
Size and spacing of lugs and flanges  
may vary.

Cover Notes:  
Roughness pattern and text style may  
vary.  
Minimum one concealed pickhole.

- ① When the contract documents require the frame to be attached to the structure, drill four  $\frac{7}{8}$ " diameter holes or slots, equally spaced around frame.
- ② If specified, furnish bolt down frame and cover with four  $\frac{1}{2}$ " x  $2\frac{1}{2}$ " stainless steel, hex head, recessed cap screws. Secure cover with screws, washers, and rubber gasket seals.
- ③ Remove bolts upon completion of paving.

 SUDAS	 Iowa Department of Transportation	REVISION	
		1	10-20-09
		FIGURE 6010.601 STANDARD ROAD PLAN	
		SW-601	
		SHEET 1 of 1	
REVISIONS: Changed note 1 and added shading.			
 SUDAS DIRECTOR		 DESIGN METHODS ENGINEER	
CASTINGS FOR SANITARY SEWER MANHOLES			