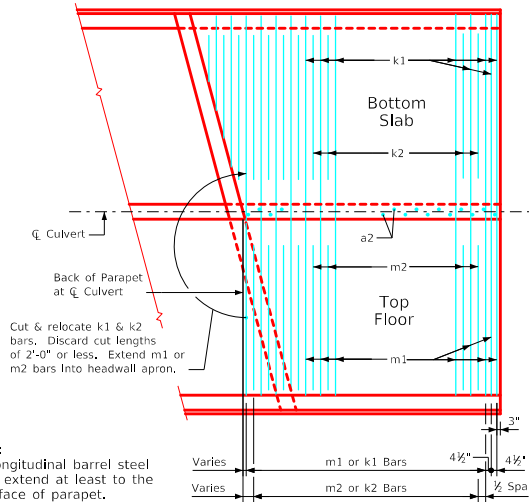
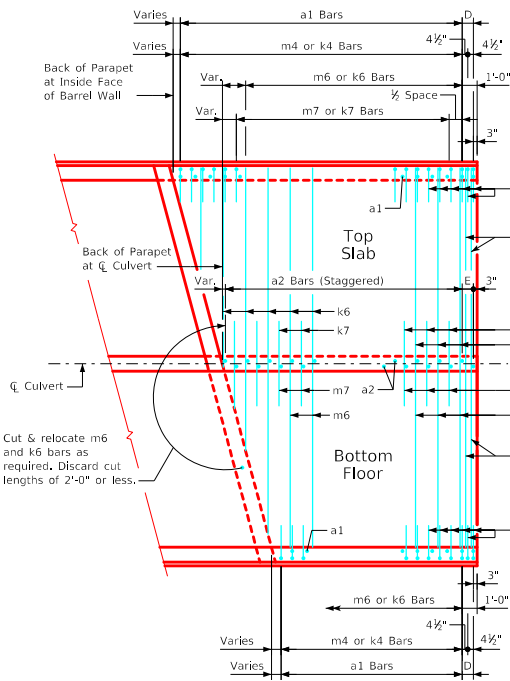
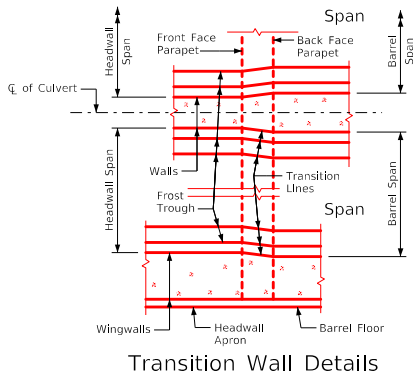


ENGLISHLRFDDESIGNEDTWINCULVERTS.DGN - TWRCB G3-20 - THIS SHEET ISSUED 07-2020.



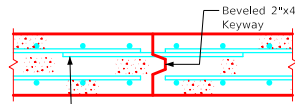
End Section Plan Views  
(Keyways not shown)

Note:  
End section details shown are for a 15° skew barrel.  
Use for skews of 30° & 45° by increasing the number of transverse reinforcing bars required to be cut and relocated.



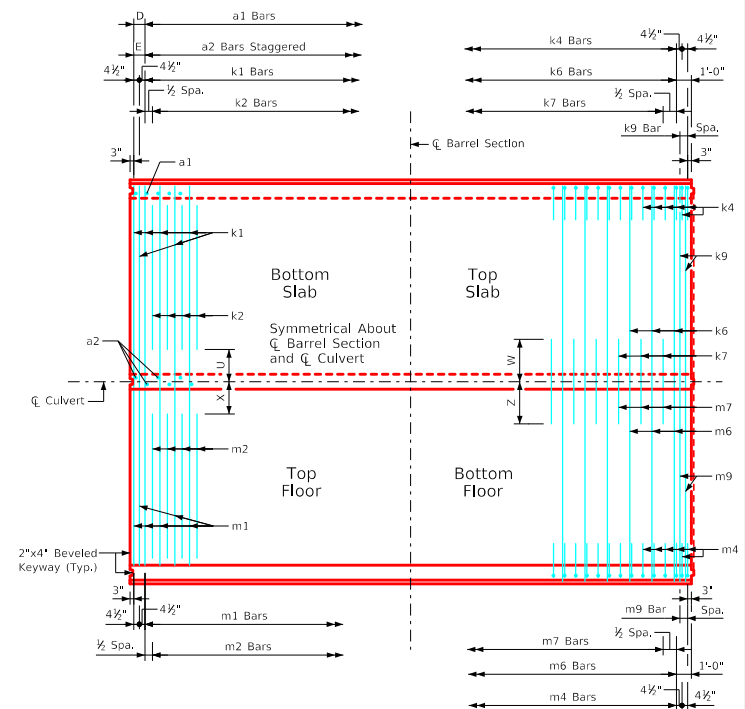
Transition Wall Details

5r1 Bars - One Const. Jt.		
Span	No.	Weight (LB)
8'-0"	18	66
10'-0"	22	80
12'-0"	26	95



Top Slab Construction Joint Detail

One set of 5r1 x 3'-6" dowel bars @ 1'-0" spacing required in slab at all culvert barrel joints, except joints with bell joints. See table for number required and total weight.



Standard Section Plan View  
(Keyway is to be omitted when bell joints are used)

Note:  
Typical for lengths of 38', 35', 32', 29', and 26'. These lengths are shown as typical because all transverse and vertical reinforcing steel spacing repeats in 3'-0" intervals.

Note:  
Dimensions listed on this sheet to be used in conjunction with dimensions and quantities for barrel section sheets.

LATEST REVISION DATE	APPROVED BY BRIDGE ENGINEER		
		Standard Design <b>Twin Reinforced Concrete Box Culverts</b> July, 2020	
		Typical Culvert Barrel Details	TWRCB G3-20