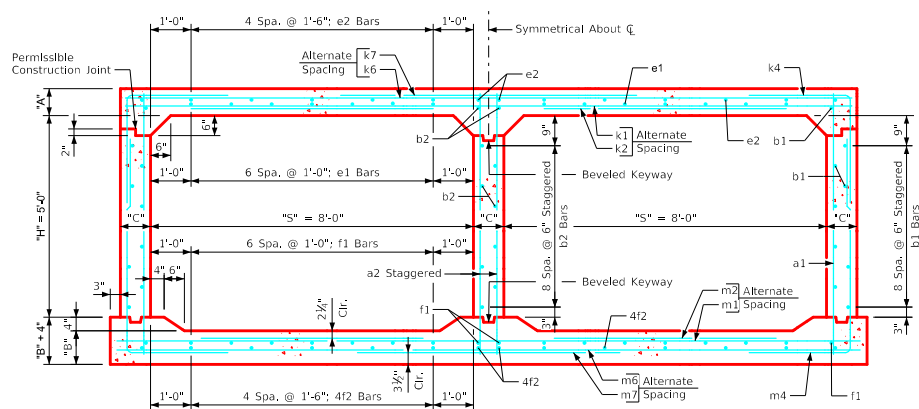
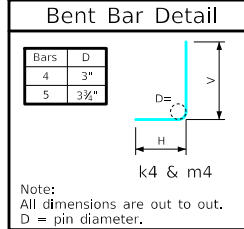


Variable Dimensions and Quantities for Twin 8' x 5' Barrel Sections

Dimensions													Bar List																																										
Fill	S	H	A	B	C	D	E	U	W	X	Z	a1			a2			b1			b2			e1			e2			f1			f2			k1			k2			k4			k6			k7			k9				
												Size	Sp.	L	Size	Sp.	L	Size	Sp.	No.	Size	Sp.	No.	Size	Sp.	No.	Size	Sp.	No.	Size	Sp.	No.	Size	Sp.	No.	Size	Sp.	No.	Size	Sp.	L	H	V	Size	Sp.	L	Size	Sp.	L	Size	Sp.	L			
0	8	5	13	10	9	9	9	0'-0	5'-2	2'-2	5'-7	5	12	6'-10	6	9	6'-10	4	6	20	4	6	11	4	12	14	4	18	14	4	12	18	4	18	14	4	12	17'-11	4	12	8'-11	4	6	8'-7	5'-5	3'-2	4	12	17'-11	4	12	10'-4	4	4.5	17'-11
1	8	5	11	10	9	9	9	0'-0	5'-5	2'-3	4'-7	4	9	6'-8	6	9	6'-8	4	6	20	4	6	11	4	12	14	4	18	14	4	12	18	4	18	14	4	12	17'-11	4	12	8'-11	4	6	8'-2	5'-2	3'-0	4	12	17'-11	5	18	10'-10	5	4.5	17'-11
2	8	5	8	10	9	9	9	1'-3	4'-10	2'-0	3'-11	4	9	6'-5	6	9	6'-5	4	6	20	4	6	11	4	12	14	4	18	14	4	12	18	4	18	14	5	12	17'-11	4	12	6'-10	4	6	5'-6	2'-9	2'-9	5	18	17'-11	6	18	9'-8	6	4.5	17'-11
3	8	5	8	10	9	9	9	1'-1	3'-8	1'-8	3'-2	4	12	6'-5	6	9	6'-5	4	6	20	4	6	11	4	12	14	4	18	14	4	12	18	4	18	14	4	12	17'-11	4	12	7'-4	4	6	5'-6	2'-9	2'-9	4	12	17'-11	4	12	7'-4	4	4.5	17'-11
4	8	5	8	10	9	9	9	1'-4	3'-3	1'-8	3'-0	4	9	6'-5	6	9	6'-5	4	6	20	4	6	11	4	12	14	4	18	14	4	12	18	4	18	14	4	12	17'-11	4	12	6'-8	5	12	5'-8	2'-7	3'-1	4	12	17'-11	4	12	6'-6	4	4.5	17'-11
5-7	8	5	8	10	9	9	9	1'-8	3'-2	1'-9	3'-1	4	9	6'-5	6	9	6'-5	4	6	20	4	6	11	4	12	14	4	18	14	4	12	18	4	18	14	4	12	17'-11	4	12	6'-3	5	12	5'-7	2'-6	3'-1	4	12	17'-11	5	12	6'-4	5	4.5	17'-11
8-10	8	5	8	10	9	9	9	2'-0	2'-11	2'-5	3'-2	4	12	6'-5	6	9	6'-5	4	6	20	4	6	11	4	12	14	4	18	14	4	12	18	4	18	14	6	18	17'-11	5	18	5'-7	4	6	5'-6	2'-9	2'-9	5	12	17'-11	5	12	5'-10	5	4.5	17'-11
11-13	8	5	8.5	11	9	9	9	2'-1	2'-10	2'-0	2'-11	4	12	6'-6	6	9	6'-6	4	6	20	4	6	11	4	12	14	4	18	14	4	12	18	4	18	14	5	12	17'-11	4	12	5'-7	4	6	5'-0	2'-3	2'-9	4	9	17'-11	5	9	5'-8	5	4.5	17'-11
14-16	8	5	9.5	12	9	9	9	1'-10	3'-0	1'-11	3'-3	4	12	6'-8	6	9	6'-8	4	6	20	4	6	11	4	12	14	4	18	14	4	12	18	4	18	14	5	12	17'-11	4	12	6'-3	4	6	5'-0	2'-2	2'-10	5	12	17'-11	6	12	6'-0	6	4.5	17'-11
17-19	8	5	10.5	12.5	9	9	9	1'-8	3'-0	1'-7	3'-3	4	12	6'-10	6	9	6'-10	4	6	20	4	6	11	4	12	14	4	18	14	4	12	18	4	18	14	5	12	17'-11	4	12	6'-7	4	6	5'-0	2'-1	2'-11	5	12	17'-11	6	12	6'-0	6	4.5	17'-11
20-22	8	5	12	14	9	9	9	1'-6	3'-0	1'-4	3'-3	4	12	7'-1	6	9	7'-1	4	6	20	4	6	11	4	12	14	4	18	14	4	12	18	4	18	14	5	12	17'-11	4	12	7'-3	4	6	5'-2	2'-1	3'-1	5	12	17'-11	6	12	6'-0	6	4.5	17'-11
23-25	8	5	13	15	9	9	9	1'-1	3'-1	1'-2	3'-2	4	12	7'-3	6	9	7'-3	4	6	20	4	6	11	4	12	14	4	18	14	4	12	18	4	18	14	4	9	17'-11	4	6	5'-4	2'-2	3'-2	5	12	17'-11	6	12	6'-2	6	4.5	17'-11			

Fill	Bar List																											Quantities			
	Size	Sp.	L	Size	Sp.	L	Size	Sp.	L	H	V	Size	Sp.	L	Size	Sp.	L	Size	Sp.	L	Slab	Floor	Walls	Total	Steel (LB/FT)						
0	5	12	18'-5	4	12	5'-6	4	6	10'-6	5'-3	5'-3	5	18	18'-5	6	18	11'-2	6	4.5	18'-5	0.789	0.638	0.382	1.809	237.82						
1	5	12	18'-5	4	12	5'-4	4	6	10'-6	5'-3	5'-3	5	18	18'-5	5	18	9'-2	5	4.5	18'-5	0.676	0.638	0.382	1.696	225.53						
2	5	12	18'-5	4	12	5'-8	4	6	8'-1	2'-10	5'-3	4	18	18'-5	6	18	7'-10	6	4.5	18'-5	0.507	0.638	0.382	1.527	220.95						
3	4	12	18'-5	4	12	6'-7	4	6	7'-9	2'-6	5'-3	4	12	18'-5	4	12	6'-4	4	4.5	18'-5	0.507	0.638	0.382	1.527	196.47						
4	4	12	18'-5	4	12	6'-3	5	12	7'-10	2'-7	5'-3	4	12	18'-5	4	12	6'-0	4	4.5	18'-5	0.507	0.638	0.382	1.527	191.71						
5-7	4	12	18'-5	4	12	6'-2	5	12	7'-9	2'-6	5'-3	5	18	18'-5	6	18	6'-2	6	4.5	18'-5	0.507	0.638	0.382	1.527	197.92						
8-10	5	12	18'-5	4	12	4'-11	4	6	7'-7	2'-4	5'-3	5	18	18'-5	7	18	6'-4	7	4.5	18'-5	0.507	0.638	0.382	1.527	222.95						
11-13	5	12	18'-5	4	12	5'-10	4	6	7'-6	2'-2	5'-4	4	9	18'-5	5	9	5'-10	5	4.5	18'-5	0.536	0.696	0.382	1.614	221.92						
14-16	5	12	18'-5	4	12	6'-4	4	6	7'-7	2'-2	5'-5	5	18	18'-5	8	18	6'-6	8	4.5	18'-5	0.592	0.753	0.382	1.727	232.05						
17-19	4	9	18'-5	4	9	6'-11	4	6	7'-7	2'-1	5'-6	5	18	18'-5	8	18	6'-6	8	4.5	18'-5	0.648	0.782	0.382	1.812	233.11						
20-22	4	9	18'-5	4	9	7'-8	4	6	7'-9	2'-2	5'-7	5	18	18'-5	8	18	6'-6	8	4.5	18'-5	0.733	0.869	0.382	1.984	237.00						
23-25	4	9	18'-5	4	9	7'-10	4	6	7'-10	2'-2	5'-8	5	12	18'-5	6	12	6'-4	6	4.5	18'-5	0.789	0.927	0.382	2.098	241.13						



Twin 8' x 5' Barrel Section

- Notes:**
- Dimensions listed on this sheet to be used in conjunction with Sheet TWRCB G3-20.
 - Fill, dimensions "S" and "H" are in feet.
 - Dimensions "A", "B", "C", "D", and "Sp." listed in the bar list are in inches.
 - Dimensions "L", "H", "V" are in feet and inches.

LATEST REVISION DATE	APPROVED BY BRIDGE ENGINEER	<p style="margin: 0;">Standard Design Twin Reinforced Concrete Box Culverts July, 2020</p>		
		<table border="1" style="width: 100%; border-collapse: collapse;"> <tr> <td style="width: 50%; text-align: center;">Culvert Barrel Details 8' x 5' Barrel Sections</td> <td style="width: 50%; text-align: center;">TWRCB 8-5-20</td> </tr> </table>	Culvert Barrel Details 8' x 5' Barrel Sections	TWRCB 8-5-20
Culvert Barrel Details 8' x 5' Barrel Sections	TWRCB 8-5-20			

ENGLISHLRFDDESIGNEDTWINCULVERTS.DGN - TWRCB 8-5-20 - THIS SHEET ISSUED 07-2020.