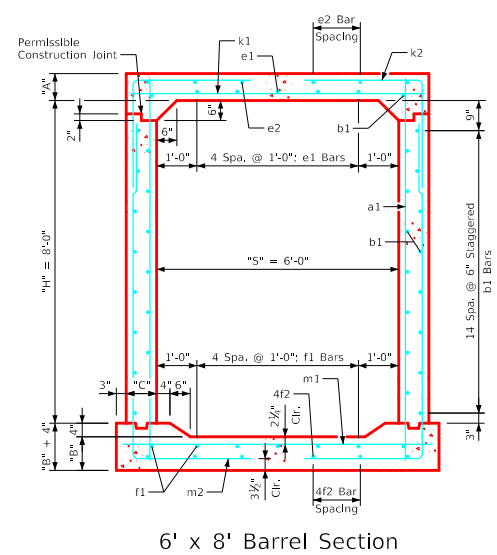
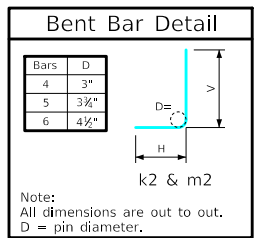


Variable Dimensions and Quantities for 6' x 8' Barrel Sections

Dimensions										Bar List																		Quantities																					
Fill	S	H	A	B	C	D	a1		b1		e1		e2		f1		f2		k1			k2			k9		m1		m2			Concrete (CY/FT)				Steel (LB/FT)													
							Size	Sp.	L	Size	Sp.	No.	Size	Sp.	No.	Size	Sp.	No.	Size	Sp.	L	Size	Sp.	L	Size	Sp.	L	Size	Sp.	L	Size	Sp.	L	Slab	Floor	Walls	Total												
0	6	8	10.5	10	9	9	4	12	9'-7"	4	6	32	5	12	5	4	14	6	4	12	7	4	14	6	6	9	7'-2"	4	6	7'-4"	4'-5"	2'-11"	-	-	6	9	7'-8"	4	6	12'-8"	4'-5"	8'-3"	-	-	0.275	0.284	0.424	0.983	137.26
1	6	8	8.5	10	9	9	4	12	9'-5"	4	6	32	5	12	5	4	14	6	4	12	7	4	14	6	6	9	7'-2"	4	6	7'-2"	4'-5"	2'-9"	-	-	6	9	7'-8"	4	6	12'-8"	4'-5"	8'-3"	-	-	0.229	0.284	0.424	0.937	136.61
2	6	8	8	10	9	9	4	12	9'-5"	4	6	32	5	12	5	4	14	6	4	12	7	4	14	6	6	9	7'-2"	4	6	7'-2"	4'-5"	2'-9"	-	-	6	9	7'-8"	4	6	12'-8"	4'-5"	8'-3"	-	-	0.218	0.284	0.424	0.926	136.61
3	6	8	8	10	9	9	4	9	9'-5"	4	6	32	4	12	5	4	14	6	4	12	7	4	14	6	4	6	7'-2"	5	12	7'-8"	4'-7"	3'-1"	-	-	4	6	7'-8"	5	12	12'-10"	4'-7"	8'-3"	-	-	0.218	0.284	0.424	0.926	120.21
4-8	6	8	8	10	9	9	4	9	9'-5"	4	6	32	4	12	5	4	14	6	4	12	7	4	14	6	4	6	7'-2"	5	12	7'-8"	4'-7"	3'-1"	-	-	4	6	7'-8"	5	12	12'-10"	4'-7"	8'-3"	-	-	0.218	0.284	0.424	0.926	120.21
9-10	6	8	8	10	9	9	4	9	9'-5"	4	6	32	4	12	5	4	15	6	4	12	7	4	14	6	4	6	7'-2"	5	12	6'-2"	3'-1"	3'-1"	5	7'-2"	4	6	7'-8"	5	12	11'-3"	3'-0"	8'-3"	5	7'-8"	0.218	0.284	0.424	0.926	114.05
11-15	6	8	8	10	9	9	4	9	9'-5"	4	6	32	4	12	5	4	13	6	4	12	7	4	13	6	6	9	7'-2"	4	6	5'-8"	2'-10"	2'-10"	4	7'-2"	5	6	7'-8"	4	6	11'-1"	2'-10"	8'-3"	4	7'-8"	0.218	0.284	0.424	0.926	131.08
16-20	6	8	8	10	9	9	5	12	9'-5"	4	6	32	4	12	5	4	15	6	4	12	7	4	13	6	5	6	7'-2"	5	9	6'-2"	3'-1"	3'-1"	5	7'-2"	5	6	7'-8"	5	9	11'-1"	2'-10"	8'-3"	5	7'-8"	0.218	0.284	0.424	0.926	139.61
21-25	6	8	8	10.5	9.5	9	4	9	9'-5"	4	6	32	4	12	5	4	13	6	4	12	7	4	13	6	7	9	7'-3"	6	9	6'-4"	2'-10"	3'-6"	6	7'-3"	6	6	7'-9"	6	9	11'-3"	2'-11"	8'-4"	6	7'-9"	0.221	0.300	0.447	0.968	173.05
26-30	6	8	8.5	11	10.5	9	4	9	9'-6"	4	6	32	4	12	5	4	14	6	4	12	7	4	12	6	7	9	7'-5"	5	6	6'-4"	3'-2"	3'-2"	5	7'-5"	6	6	7'-11"	5	6	11'-2"	2'-10"	8'-4"	5	7'-11"	0.240	0.318	0.496	1.054	174.16
31-35	6	8	9.5	12	11.5	9	5	12	9'-8"	4	6	32	4	12	5	4	11	6	4	12	7	4	12	6	7	9	7'-7"	5	6	6'-0"	2'-9"	3'-3"	5	7'-7"	6	6	8'-1"	5	6	11'-4"	2'-11"	8'-5"	5	8'-1"	0.271	0.352	0.542	1.165	178.13
36-40	6	8	10	12.5	12.5	9	5	12	9'-9"	4	6	32	4	12	5	4	14	6	4	12	7	4	12	6	6	6	7'-9"	5	6	6'-6"	3'-3"	3'-3"	5	7'-9"	6	6	8'-3"	5	6	11'-5"	2'-11"	8'-6"	5	8'-3"	0.291	0.373	0.589	1.253	183.24
41-45	6	8	11	13.5	13	6	4	6	9'-11"	4	6	32	4	12	5	4	14	6	4	12	7	4	13	6	6	6	7'-10"	5	6	6'-8"	3'-4"	3'-4"	5	7'-10"	6	6	8'-4"	5	6	11'-8"	3'-1"	8'-7"	5	8'-4"	0.320	0.404	0.613	1.337	191.16
46-50	6	8	11.5	14	14	6	4	6	10'-0"	4	6	32	4	12	5	4	12	6	4	12	7	4	12	6	8	9	8'-0"	6	9	6'-10"	3'-0"	3'-10"	6	8'-0"	8	9	8'-6"	6	9	11'-8"	3'-1"	8'-7"	6	8'-6"	0.341	0.427	0.659	1.427	204.05
51-55	6	8	12	15	14.5	6	4	6	10'-2"	4	6	32	4	12	5	4	12	6	4	12	7	4	13	6	8	9	8'-1"	6	9	6'-11"	3'-1"	3'-10"	6	8'-1"	8	9	8'-7"	6	9	11'-11"	3'-3"	8'-8"	6	8'-7"	0.358	0.459	0.683	1.500	206.53



- Notes:**
- Dimensions listed on this sheet to be used in conjunction with Sheet RCB G3-20.
 - The k2 and m2 bars horizontal legs may lap in low fill situations.
 - Fill, dimensions "S" and "H" are in feet.
 - Dimensions "A", "B", "C", "D", and "Sp." listed in the bar list are in inches.
 - Dimensions "L", "H", "V" are in feet and inches.

LATEST REVISION DATE	APPROVED BY BRIDGE ENGINEER	Standard Design Single Reinforced Concrete Box Culverts July, 2020
Culvert Barrel Details 6' x 8' Barrel Sections		RCB 6-8-20

ENGLISHLRFDDESIGNEDSINGLECULVERTS.DGN - RCB 6-8-20 - THIS SHEET ISSUED 07-2020.