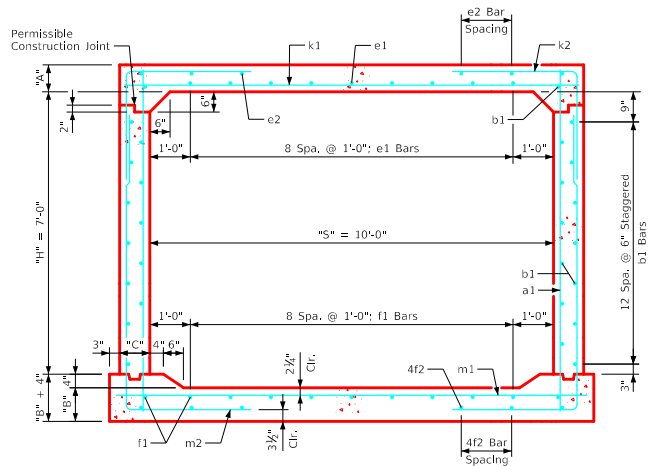
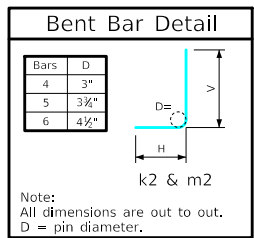


Variable Dimensions and Quantities for 10' x 7' Barrel Sections

Dimensions				Bar List																								Quantities																					
Fill	S	H	A	B	C	D	a1			b1			e1			e2			f1			f2			k1			k2			k9			m1		m2			m9				Concrete (CY/FT)				Steel (LB/FT)		
							Size	Sp.	L	Size	Sp.	No.	Size	Sp.	No.	Size	Sp.	No.	Size	Sp.	No.	Size	Sp.	No.	Size	Sp.	L	Size	Sp.	L	Size	Sp.	L	Size	Sp.	L	Size	Sp.	L	Size	Sp.	L	Slab	Floor	Walls	Total			
0	10	7	12	12	9	6	4	6	8'-11"	4	6	28	4	12	9	4	14	10	4	12	11	4	13	8	5	6	11'-2"	4	6	8'-5"	5'-4"	3'-1"	4	11'-2"	7	9	11'-8"	4	6	11'-5"	4'-0"	7'-5"	4	11'-8"	0.458	0.481	0.368	1.307	178.89
1	10	7	11.5	12	9	6	4	6	8'-10"	4	6	28	4	12	9	4	17	8	4	12	11	4	13	8	5	6	11'-2"	4	6	8'-8"	5'-8"	3'-0"	-	5	6	11'-8"	4	6	11'-4"	3'-11"	7'-5"	4	11'-8"	0.441	0.481	0.368	1.290	168.82	
2	10	7	8	10	9	9	4	9	8'-5"	4	6	28	5	12	9	4	12	8	4	12	11	4	17	6	6	6	11'-2"	6	9	7'-4"	3'-8"	3'-8"	6	11'-2"	6	6	11'-8"	6	9	10'-9"	3'-6"	7'-3"	6	11'-8"	0.316	0.407	0.368	1.091	206.58
3	10	7	8	10	9	9	4	12	8'-5"	4	6	28	4	12	9	4	16	6	4	12	11	4	15	6	7	9	11'-2"	5	6	6'-6"	3'-3"	3'-3"	5	11'-2"	6	6	11'-8"	5	6	10'-5"	3'-2"	7'-3"	5	11'-8"	0.316	0.407	0.368	1.091	191.37
4-8	10	7	8	10	9	9	4	12	8'-5"	4	6	28	4	12	9	4	15	6	4	12	11	4	15	6	6	6	11'-2"	5	6	6'-2"	3'-1"	3'-1"	5	11'-2"	6	6	11'-8"	5	6	10'-4"	3'-1"	7'-3"	5	11'-8"	0.316	0.407	0.368	1.091	191.37
9-10	10	7	8	10.5	9	9	4	12	8'-5"	4	6	28	4	12	9	4	15	6	4	12	11	4	13	6	6	6	11'-2"	5	6	6'-2"	3'-1"	3'-1"	5	11'-2"	7	6	11'-8"	5	6	10'-1"	2'-9"	7'-4"	5	11'-8"	0.316	0.425	0.368	1.109	203.53
11-15	10	7	9	10.5	9	9	5	12	8'-6"	4	6	28	4	12	9	4	12	6	4	12	11	4	12	6	7	6	11'-2"	5	6	5'-9"	2'-7"	3'-2"	5	11'-2"	7	6	11'-8"	5	6	10'-0"	2'-8"	7'-4"	5	11'-8"	0.352	0.425	0.368	1.145	220.32
16-20	10	7	10.5	13	9	6	4	6	8'-10"	4	6	28	4	12	9	4	11	6	4	12	11	4	11	6	7	6	11'-2"	6	9	6'-3"	2'-6"	3'-9"	6	11'-2"	8	6	11'-8"	6	9	10'-0"	2'-6"	7'-6"	6	11'-8"	0.405	0.518	0.368	1.291	242.61
21-25	10	7	12.5	14.5	9	6	4	6	9'-2"	4	6	28	4	12	9	4	11	6	4	12	11	4	11	6	8	6	11'-2"	6	9	6'-3"	2'-5"	3'-10"	6	11'-2"	8	6	11'-8"	6	9	10'-2"	2'-6"	7'-8"	6	11'-8"	0.476	0.574	0.368	1.418	258.39
26-30	10	7	14	16	9.5	9	5	12	9'-5"	4	6	28	4	12	9	4	11	6	4	12	11	4	11	6	8	6	11'-3"	5	6	6'-1"	2'-6"	3'-7"	5	11'-3"	8	6	11'-9"	5	6	10'-4"	2'-7"	7'-9"	5	11'-9"	0.534	0.634	0.389	1.557	255.00
31-35	10	7	15	17.5	10	9	5	12	9'-7"	4	6	28	4	12	9	4	12	6	4	12	11	4	12	6	8	6	11'-4"	5	6	6'-4"	2'-8"	3'-8"	5	11'-4"	8	6	11'-10"	5	6	10'-7"	2'-8"	7'-11"	5	11'-10"	0.575	0.696	0.409	1.680	258.39
36-40	10	7	16.5	19	11	6	4	6	9'-10"	4	6	28	4	12	9	4	12	6	4	12	11	4	13	6	8	6	11'-6"	5	6	6'-8"	2'-10"	3'-10"	5	11'-6"	8	6	12'-0"	5	6	10'-11"	2'-11"	8'-0"	5	12'-0"	0.640	0.762	0.451	1.853	268.74
41-45	10	7	17.5	20	11.5	9	6	9	10'-0"	4	6	28	4	12	9	4	14	6	4	12	11	4	13	6	9	6	11'-7"	6	9	7'-6"	3'-2"	4'-4"	6	11'-7"	9	6	12'-1"	6	9	11'-1"	3'-0"	8'-1"	6	12'-1"	0.682	0.807	0.471	1.960	322.84
46-50	10	7	19	21.5	12	9	6	12	10'-3"	4	6	28	4	12	9	4	14	6	4	12	11	4	13	6	9	6	11'-8"	6	9	7'-8"	3'-3"	4'-5"	6	11'-8"	9	6	12'-2"	6	9	11'-4"	3'-1"	8'-3"	6	12'-2"	0.744	0.871	0.492	2.107	317.03
51-55	10	7	20	22.5	13	9	6	9	10'-5"	4	6	28	4	12	9	4	14	6	5	12	11	4	14	6	9	6	11'-10"	6	9	7'-10"	3'-4"	4'-6"	6	11'-10"	9	6	12'-4"	6	9	11'-7"	3'-3"	8'-4"	6	12'-4"	0.794	0.923	0.532	2.249	335.58



- Notes:**
- Dimensions listed on this sheet to be used in conjunction with Sheet RCB G3-20.
 - The k2 and m2 bars horizontal legs may lap in low fill situations.
 - Fill, dimensions "S" and "H" are in feet.
 - Dimensions "A", "B", "C", "D", and "Sp." listed in the bar list are in inches.
 - Dimensions "L", "H", "V" are in feet and inches.

LATEST REVISION DATE	APPROVED BY BRIDGE ENGINEER	Standard Design Single Reinforced Concrete Box Culverts July, 2020	RCB 10-7-20
		Culvert Barrel Details 10' x 7' Barrel Sections	
		10' x 7' Barrel Sections	

ENGLISHLRFDDESIGNEDSINGLECULVERTS.DGN - RCB 10-7-20 - THIS SHEET ISSUED 07-2020.