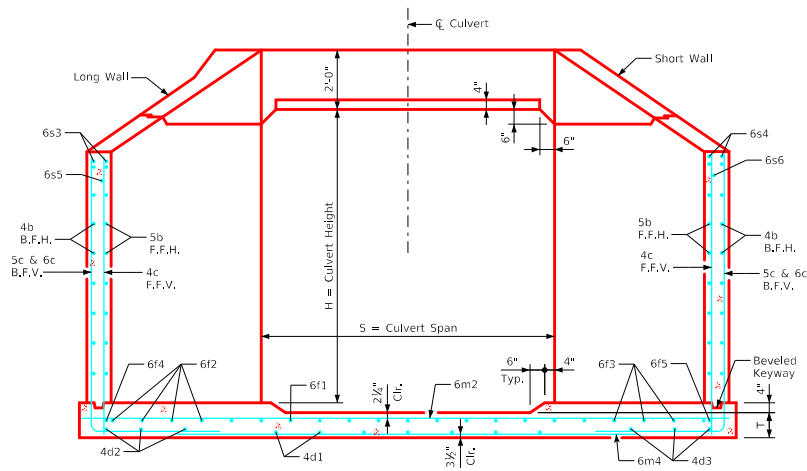
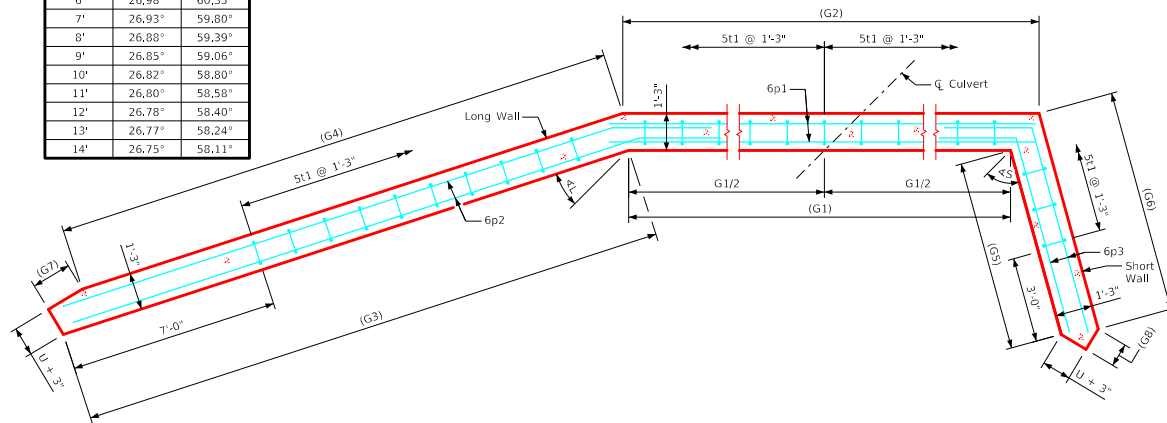


ENGLISH\DESIGNED\W\IN\CULVERTS\FWH - FWH 45-5-21 - THIS SHEET ISSUED 02-2021.



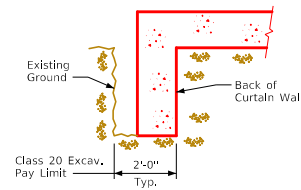
Typical Section - Near Center of Apron

Culvert Height (H)	Angle	
	<L	<S
3'	27.34°	63.85°
4'	27.17°	62.16°
5'	27.06°	61.09°
6'	26.98°	60.35°
7'	26.93°	59.80°
8'	26.88°	59.39°
9'	26.85°	59.06°
10'	26.82°	58.80°
11'	26.80°	58.58°
12'	26.78°	58.40°
13'	26.77°	58.24°
14'	26.75°	58.11°

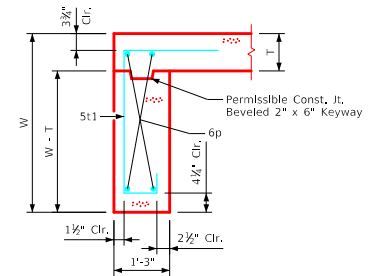


Curtain Wall Plan

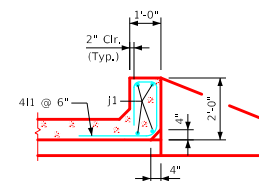
Note: <L & <S are measured from a line parallel to C Culvert.



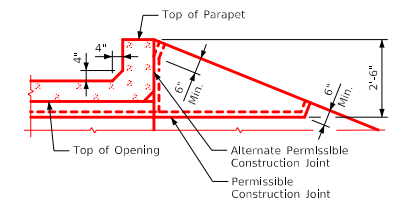
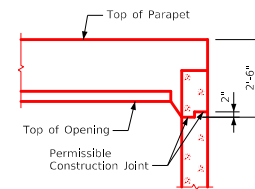
Curtain Wall  
Class 20 Excavation



Section thru Curtain Wall



Section thru Parapet



Top of Wingwall Details

Notes:

1. See Sheet FWH G2-21 for General Notes, Specifications, and Design Stresses.
2. See Sheet FWH 45-2-21 for dimensions table.

LATEST REVISION DATE	APPROVED BY BRIDGE ENGINEER	<b>IOWADOT</b> Highway Division	
		Standard Design - Single Reinforced Concrete Box Culverts	
		Flared Wing Headwalls	
		February, 2021	
		Parapet & Curtain Wall Details 45° Skew	FWH 45-5-21