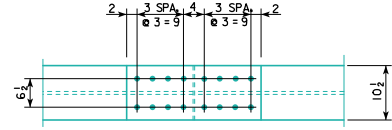
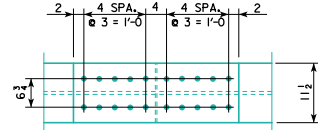


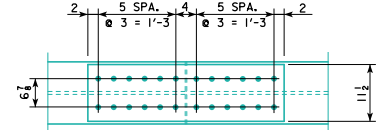
TOP AND BOTTOM FLANGE



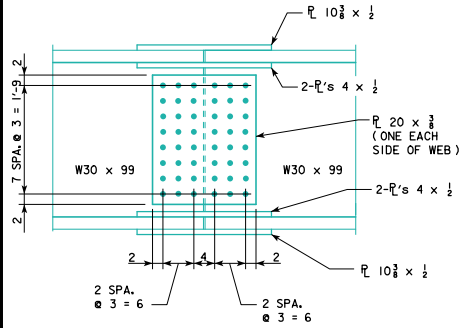
TOP AND BOTTOM FLANGE



TOP AND BOTTOM FLANGE



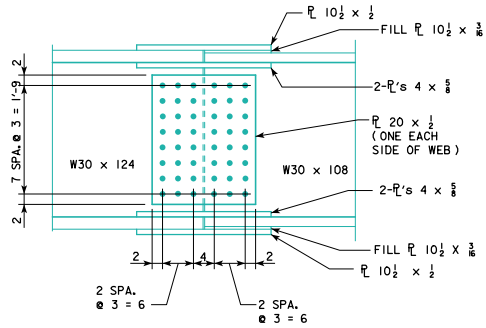
TOP AND BOTTOM FLANGE



BOLTED SPLICE DETAILS

160' BEAM SPLICE

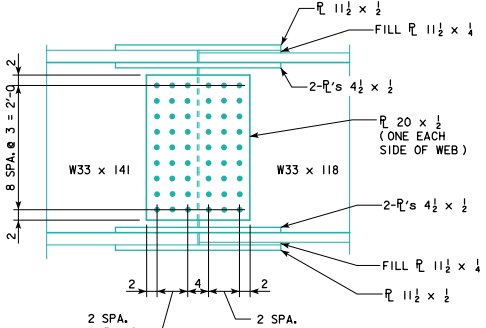
NOTE: ALL BOLTS 3/4"



BOLTED SPLICE DETAILS

180' BEAM SPLICE

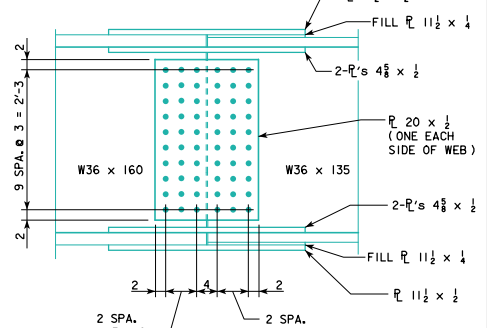
NOTE: ALL BOLTS 3/4"



BOLTED SPLICE DETAILS

200' BEAM SPLICE

NOTE: ALL BOLTS 3/4"



BOLTED SPLICE DETAILS

220' BEAM SPLICE

NOTE: ALL BOLTS 3/4"

LATEST REVISION DATE	 APPROVED BY BRIDGE ENGINEER	 STANDARD DESIGN - 40' ROADWAY, 3 SPAN BRIDGES ROLLED STEEL BEAM BRIDGES JUNE, 2010	
		BOLTED FIELD SPLICE DETAILS SHEET 1	RS40-084-10