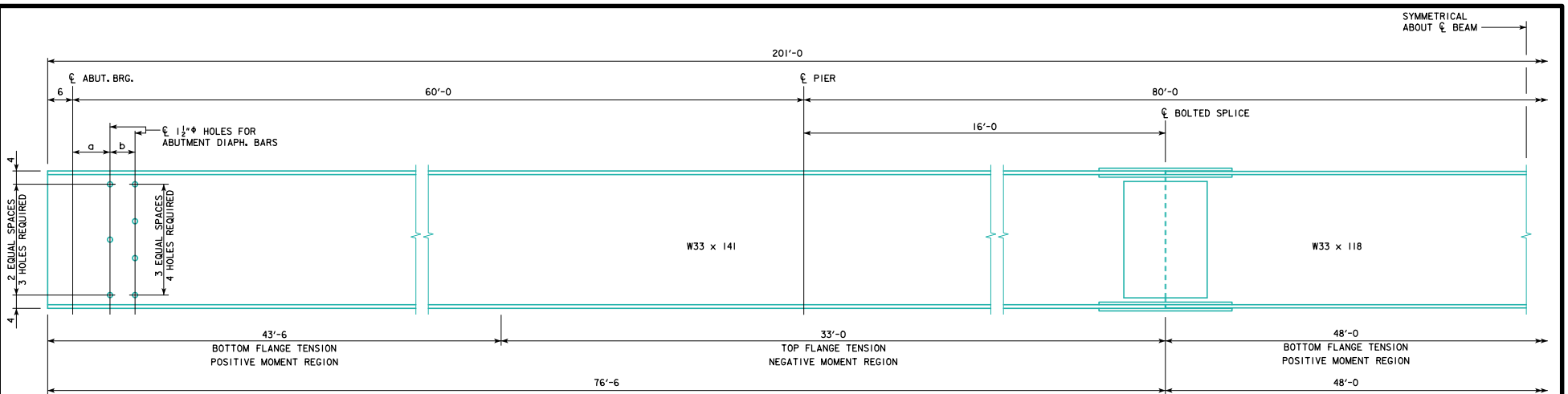
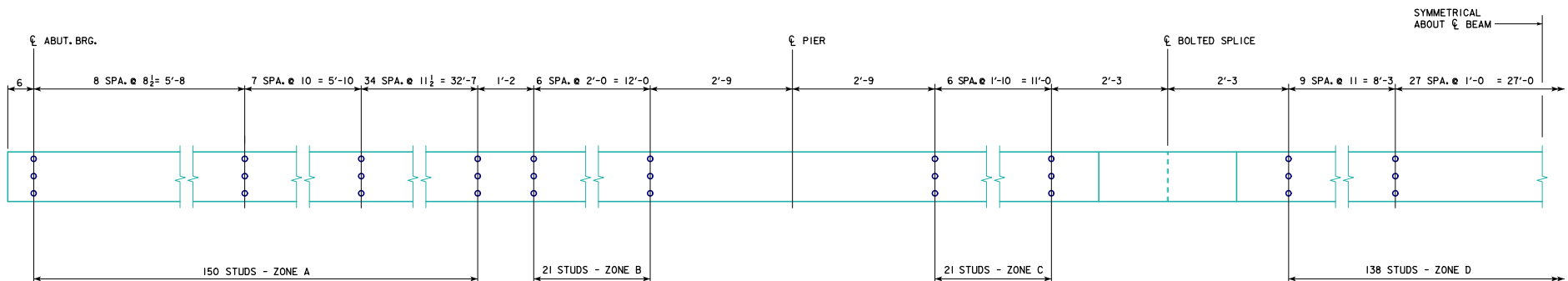


REVISED 02-2017 - CHANGED NOTE STATING 'MISCELLANEOUS DETAILS 200'-0 BRIDGE' (WAS '160'-0 IN ERROR).



BEAM ELEVATION



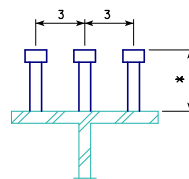
SHEAR STUD SPACING

* NOTE: STUD HEIGHTS (3 1/2", 4" OR 5") FOR THE LOCATIONS SHOWN SHALL BE DETERMINED BY THE DESIGNER. ON "MISCELLANEOUS DETAILS 200'-0 BRIDGE" SHEET, STUD HEIGHTS CAN BE IDENTIFIED BY THE DESIGNER IN A TABLE CORRESPONDING TO THE ZONES LISTED ON THIS SHEET.

Δ WEIGHT OF SHEAR STUDS ARE NOT INCLUDED, SEE MISC. DETAILS - STANDARDS 5252 TO 5261.

STRUCTURAL STEEL	
Δ BEAM WEIGHT	27,237 LBS.

NOTE: STRUCTURAL STEEL WEIGHT IS INCLUDED ON THE SUMMARY QUANTITIES SHEET.



SHEAR STUD DETAILS

NOTE: ALL STUDS TO BE 1/2" φ

SKEW	a (IN)	b (IN)
0°	9	6
10°	9 1/4	6 1/8
20°	9 1/2	6 3/8
30°	10 1/4	6 1/2
45°	12 1/4	8 1/2

LATEST REVISION DATE
02-2017
Norman E. Mc Donald
APPROVED BY BRIDGE ENGINEER

IOWADOT Highway Division

STANDARD DESIGN - 40' ROADWAY, 3 SPAN BRIDGES
ROLLED STEEL BEAM BRIDGES

OCTOBER, 2014

**BEAM PLAN AND ELEVATION
200'-0 BRIDGE**

RS40-073-14